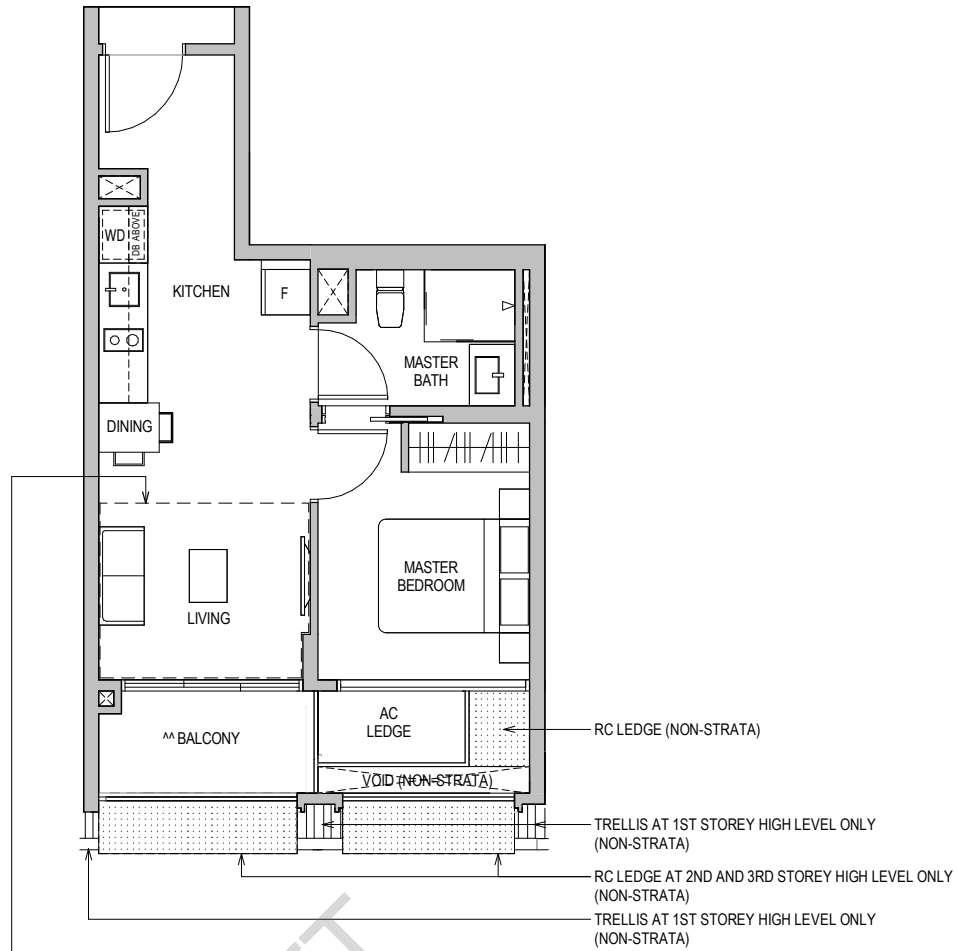


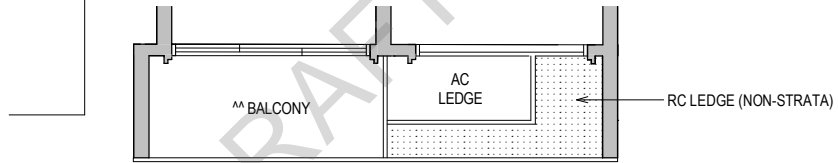
TYPE A1

47 SQM / 506 SQFT
 Block 08 #02-08 TO #04-08
 Block 10 #02-18 TO #04-18



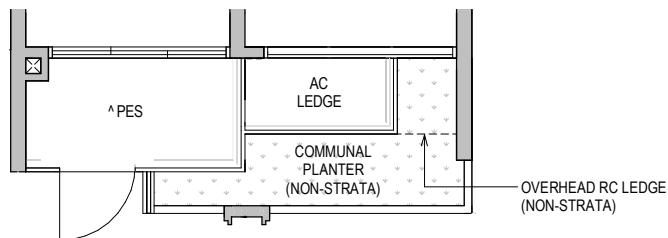
TYPE A1H

55 SQM / 592 SQFT
 ** AREA IS INCLUSIVE OF STRATA VOID AREA ABOVE LIVING AS PER DOTTED LINE
 Block 08 #05-08
 Block 10 #05-18



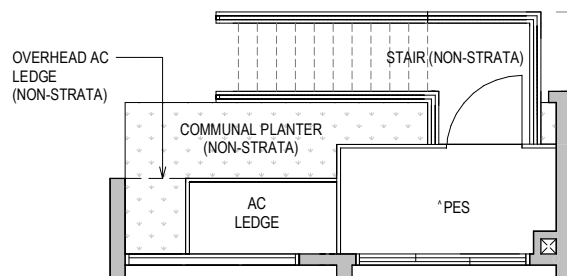
TYPE A1 (PES)

47 SQM / 506 SQFT
 Block 08 #01-08
 Block 10 #01-18



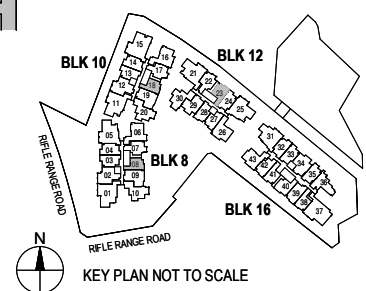
TYPE A1 (PES)

47 SQM / 506 SQFT
 Block 12 #01-23



^ The PES shall not be enclosed.
 ^^ The balcony shall not be enclosed. Only approved balcony screens are to be used.
 For an illustration of the approved balcony screen, please refer to the diagram annexed hereto as "Annexure 1".

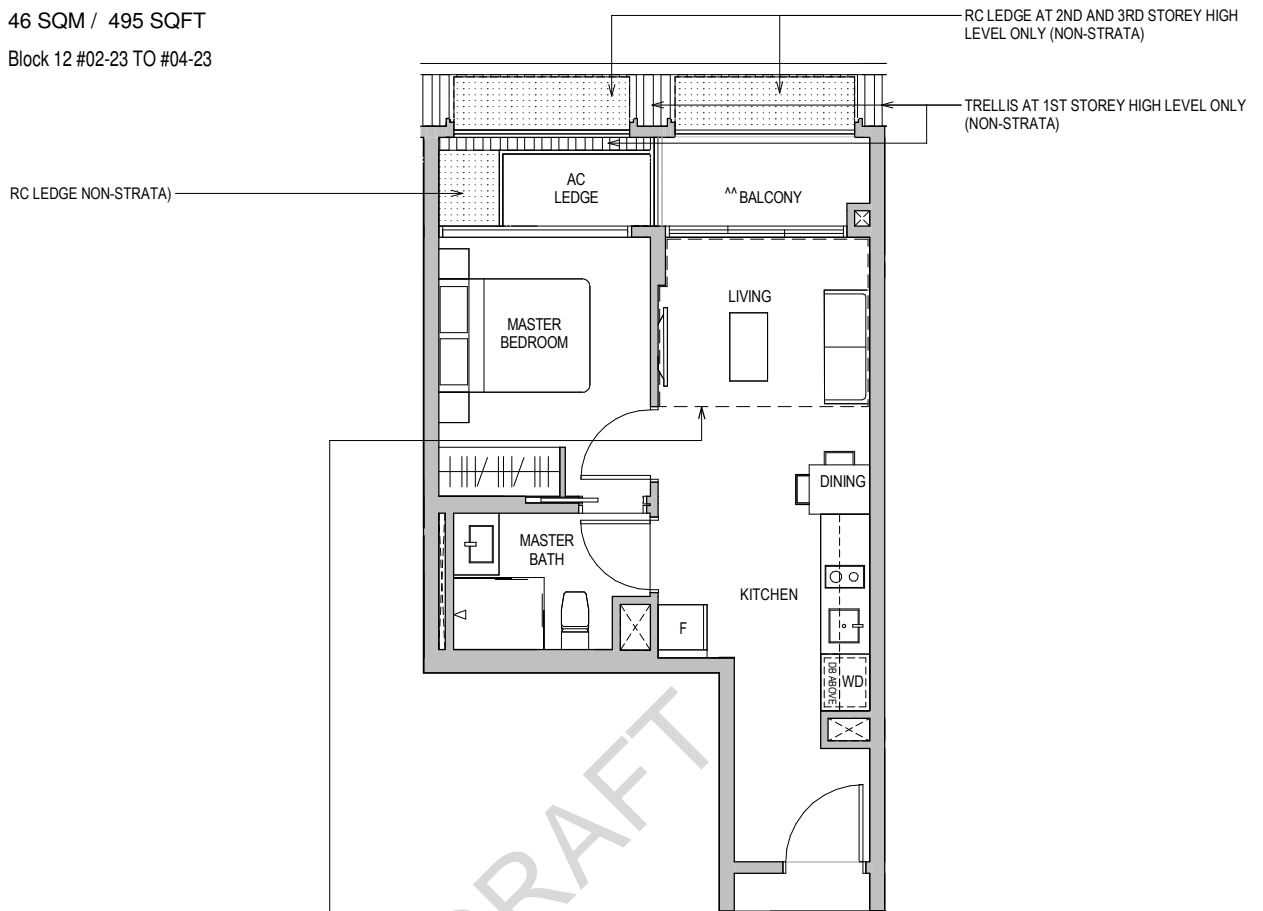
Areas include AC Ledge, Balcony, PES, and Strata Void Area (where applicable). Orientations and facings will differ depending on the unit you are purchasing, please refer to the key plan. Plans are not drawn to scale and subject to change as may be required or approved by the relevant authorities. All areas are estimates only and are subject to final survey.



TYPE A1a

46 SQM / 495 SQFT

Block 12 #02-23 TO #04-23

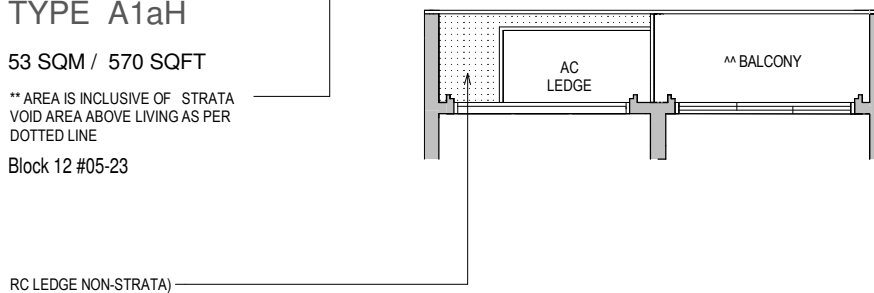


TYPE A1aH

53 SQM / 570 SQFT

** AREA IS INCLUSIVE OF STRATA VOID AREA ABOVE LIVING AS PER DOTTED LINE

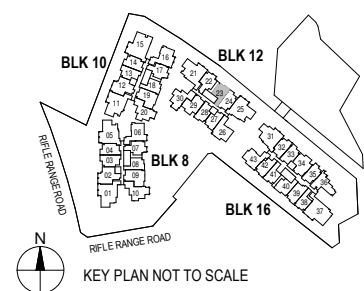
Block 12 #05-23



^ The PES shall not be enclosed.

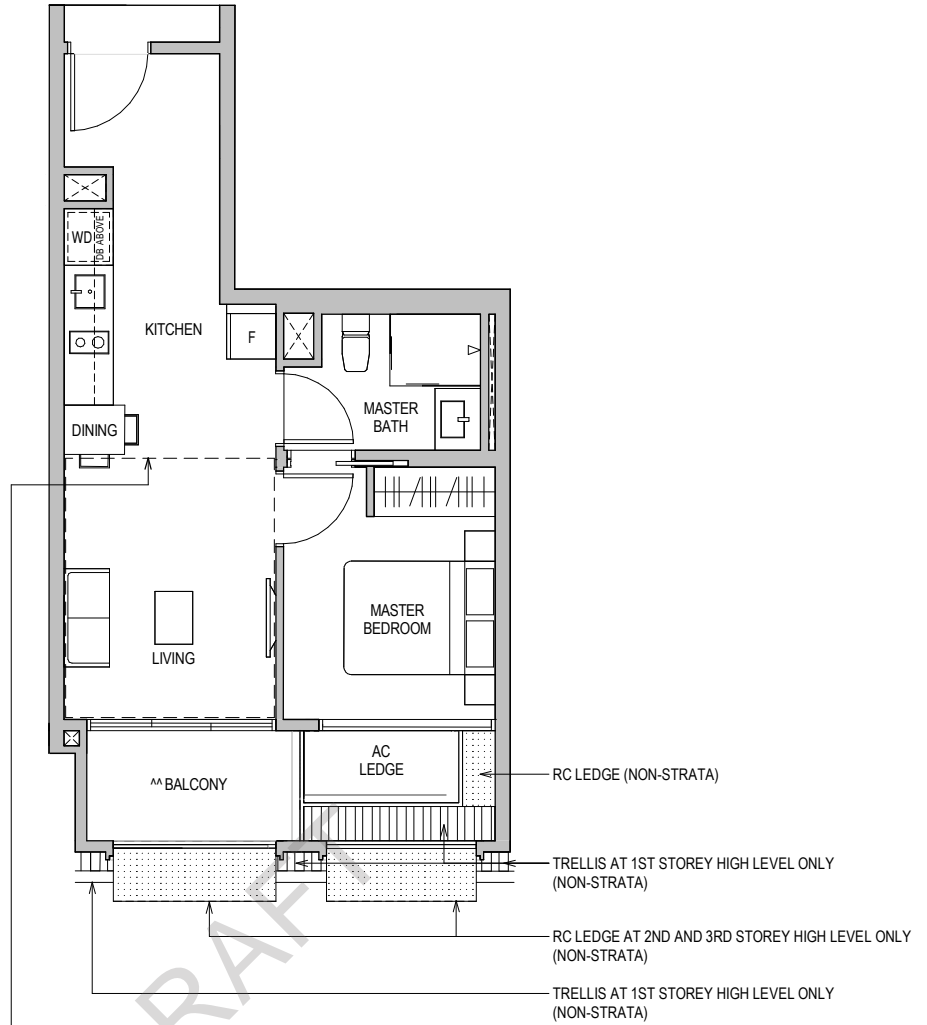
^^ The balcony shall not be enclosed. Only approved balcony screens are to be used. For an illustration of the approved balcony screen, please refer to the diagram annexed hereto as "Annexure 1".

Areas include AC Ledge, Balcony, PES, and Strata Void Area (where applicable). Orientations and facings will differ depending on the unit you are purchasing, please refer to the key plan. Plans are not drawn to scale and subject to change as may be required or approved by the relevant authorities. All areas are estimates only and are subject to final survey.



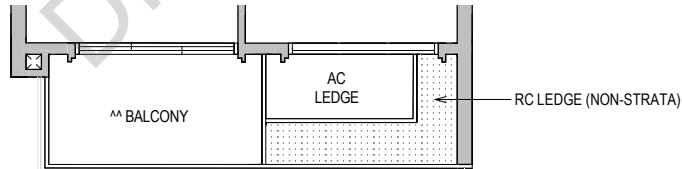
TYPE A2

49 SQM / 527 SQFT
Block 16 #02-41 TO #04-41



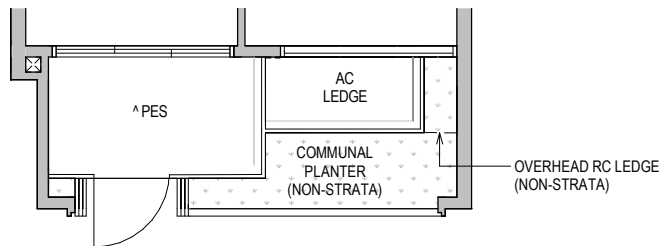
TYPE A2H

60 SQM / 646 SQFT
** AREA IS INCLUSIVE OF STRATA VOID AREA ABOVE LIVING AS PER DOTTED LINE
Block 16 #05-41



TYPE A2 (PES)

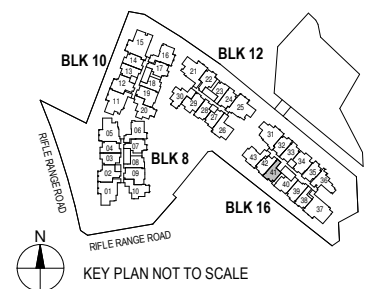
49 SQM / 527 SQFT
Block 16 #01-41



^ The PES shall not be enclosed.

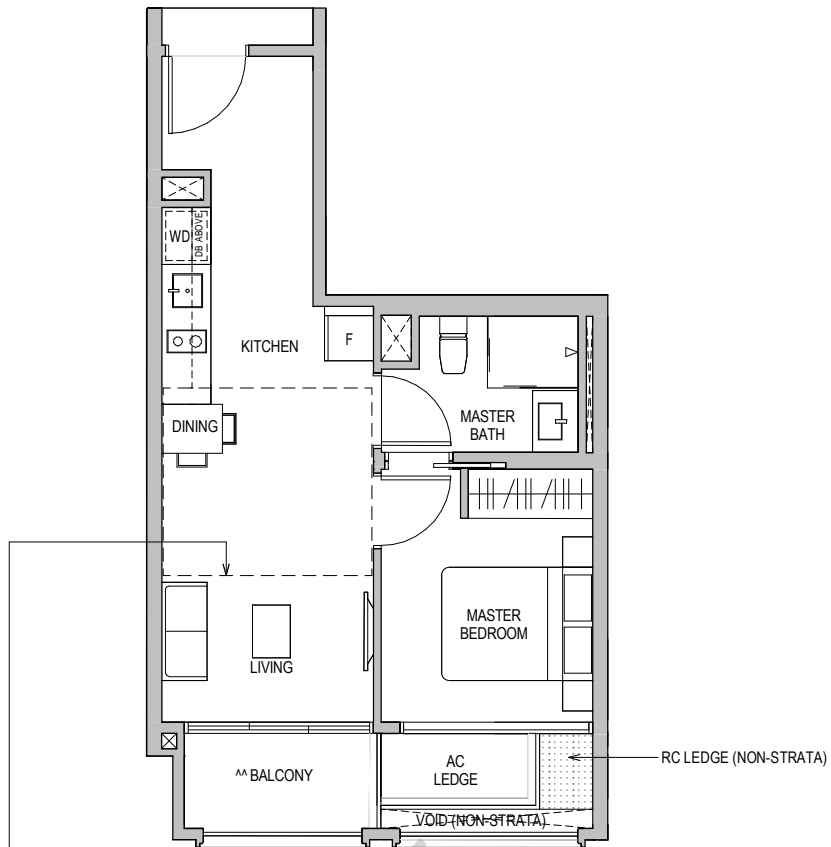
^^ The balcony shall not be enclosed. Only approved balcony screens are to be used. For an illustration of the approved balcony screen, please refer to the diagram annexed hereto as "Annexure 1".

Areas include AC Ledge, Balcony, PES, and Strata Void Area (where applicable). Orientations and facings will differ depending on the unit you are purchasing, please refer to the key plan. Plans are not drawn to scale and subject to change as may be required or approved by the relevant authorities. All areas are estimates only and are subject to final survey.



TYPE A3

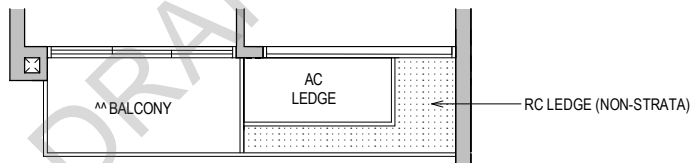
48 SQM / 517 SQFT
Block 16 #02-38 TO #04-38



TYPE A3H

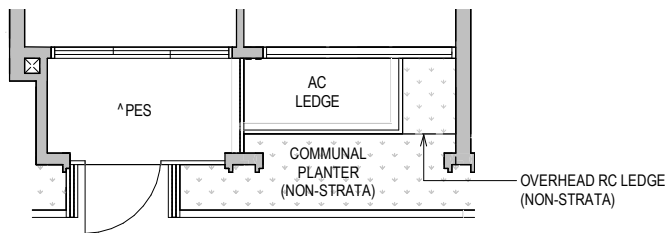
57 SQM / 614 SQFT

** AREA IS INCLUSIVE OF STRATA VOID AREA ABOVE LIVING AND DINING AS PER DOTTED LINE
Block 16 #05-38



TYPE A3 (PES)

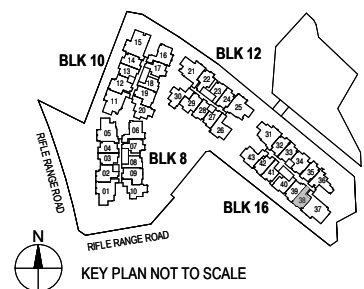
48 SQM / 517 SQFT
Block 16 #01-38



^ The PES shall not be enclosed.

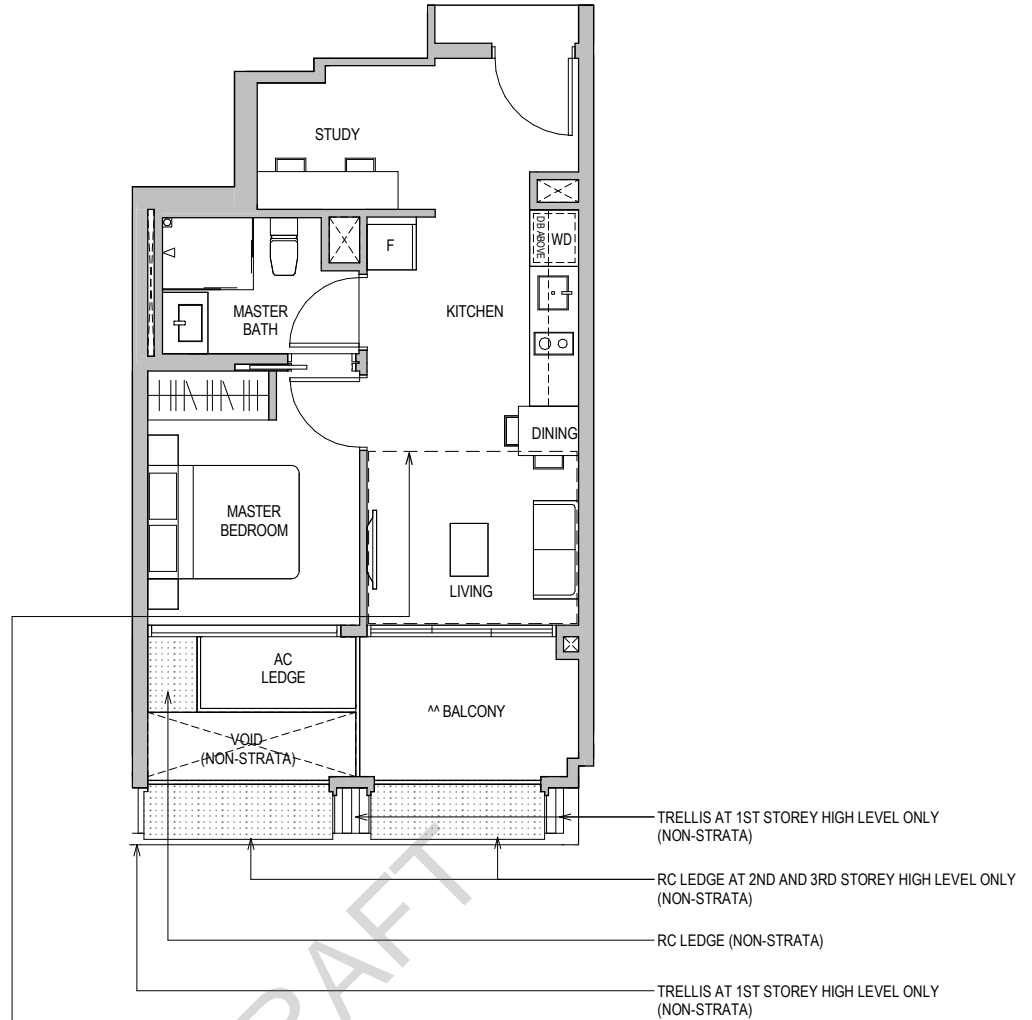
^^ The balcony shall not be enclosed. Only approved balcony screens are to be used. For an illustration of the approved balcony screen, please refer to the diagram annexed hereto as "Annexure 1".

Areas include AC Ledge, Balcony, PES, and Strata Void Area (where applicable). Orientations and facings will differ depending on the unit you are purchasing, please refer to the key plan. Plans are not drawn to scale and subject to change as may be required or approved by the relevant authorities. All areas are estimates only and are subject to final survey.



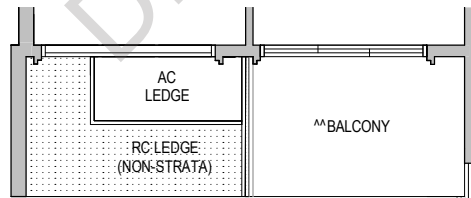
TYPE AS1

52 SQM / 560 SQFT
Block 12 #02-27 TO #04-27



TYPE AS1H

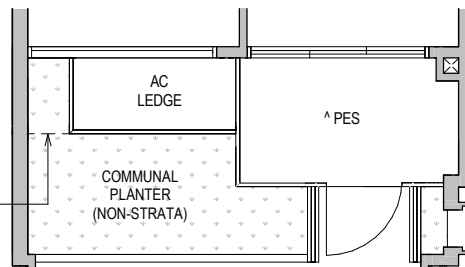
59 SQM / 635 SQFT
** AREA IS INCLUSIVE OF STRATA VOID AREA ABOVE LIVING AS PER DOTTED LINE
Block 12 #05-27



TYPE AS1 (PES)

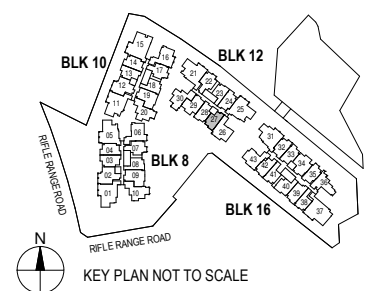
51 SQM / 549 SQFT
Block 12 #01-27

OVERHEAD RC LEDGE (NON-STRATA)



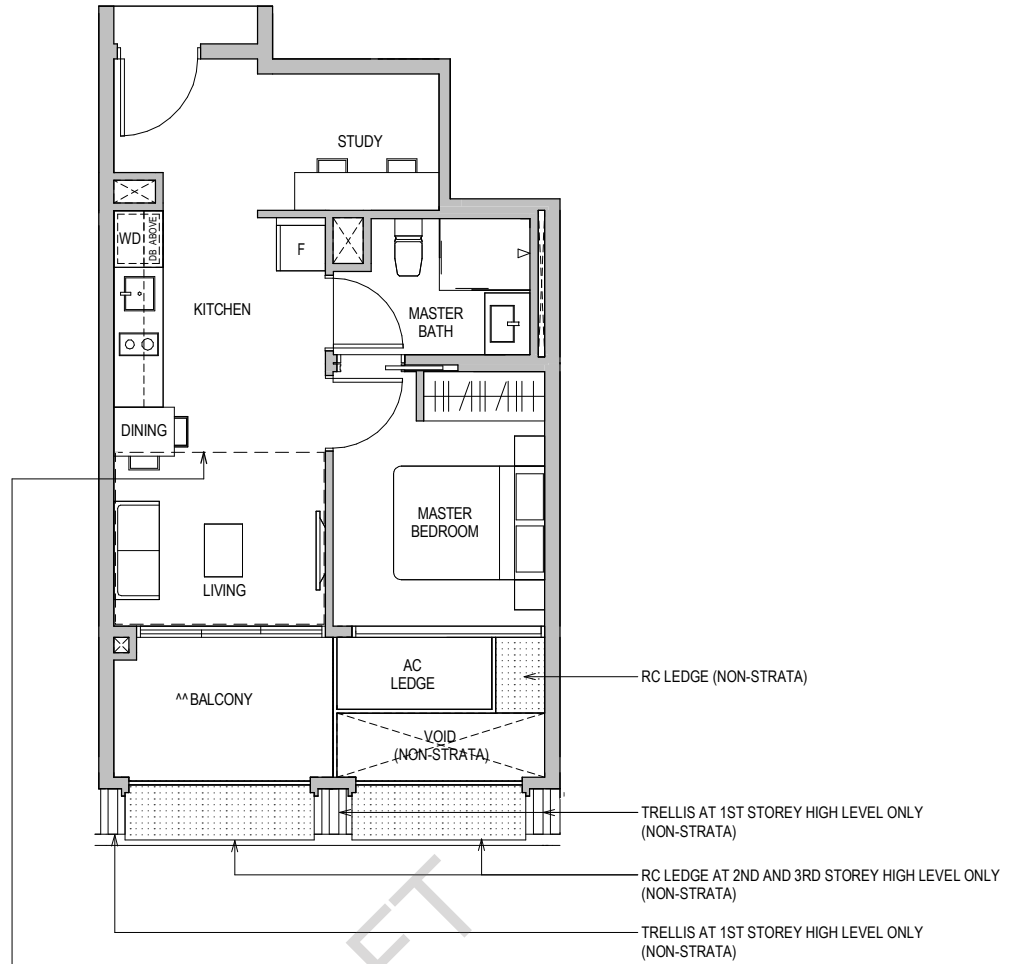
^ The PES shall not be enclosed.
^^ The balcony shall not be enclosed. Only approved balcony screens are to be used. For an illustration of the approved balcony screen, please refer to the diagram annexed hereto as "Annexure 1".

Areas include AC Ledge, Balcony, PES, and Strata Void Area (where applicable). Orientations and facings will differ depending on the unit you are purchasing, please refer to the key plan. Plans are not drawn to scale and subject to change as may be required or approved by the relevant authorities. All areas are estimates only and are subject to final survey.



TYPE AS1a

52 SQM / 560 SQFT
Block 12 #02-28 TO #04-28

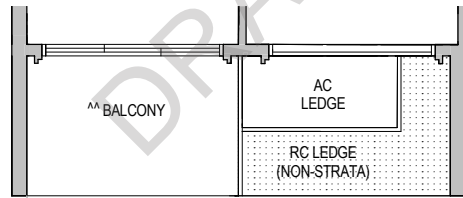


TYPE AS1aH

59 SQM / 635 SQFT

** AREA IS INCLUSIVE OF STRATA VOID AREA ABOVE LIVING AS PER DOTTED LINE

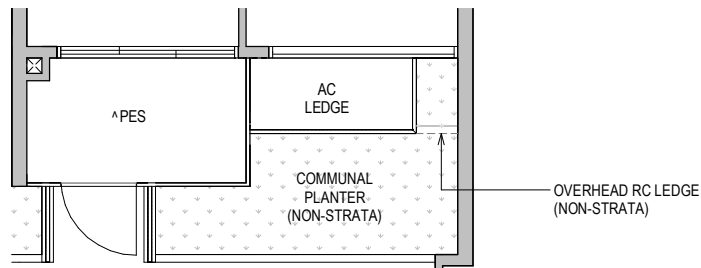
Block 12 #05-28



TYPE AS1a (PES)

51 SQM / 549 SQFT

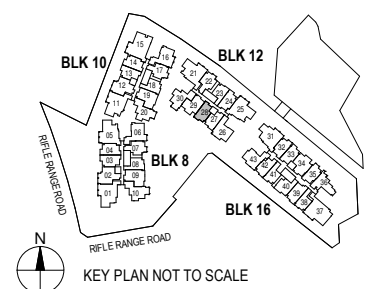
Block 12 #01-28



^ The PES shall not be enclosed.

^^ The balcony shall not be enclosed. Only approved balcony screens are to be used. For an illustration of the approved balcony screen, please refer to the diagram annexed hereto as "Annexure 1".

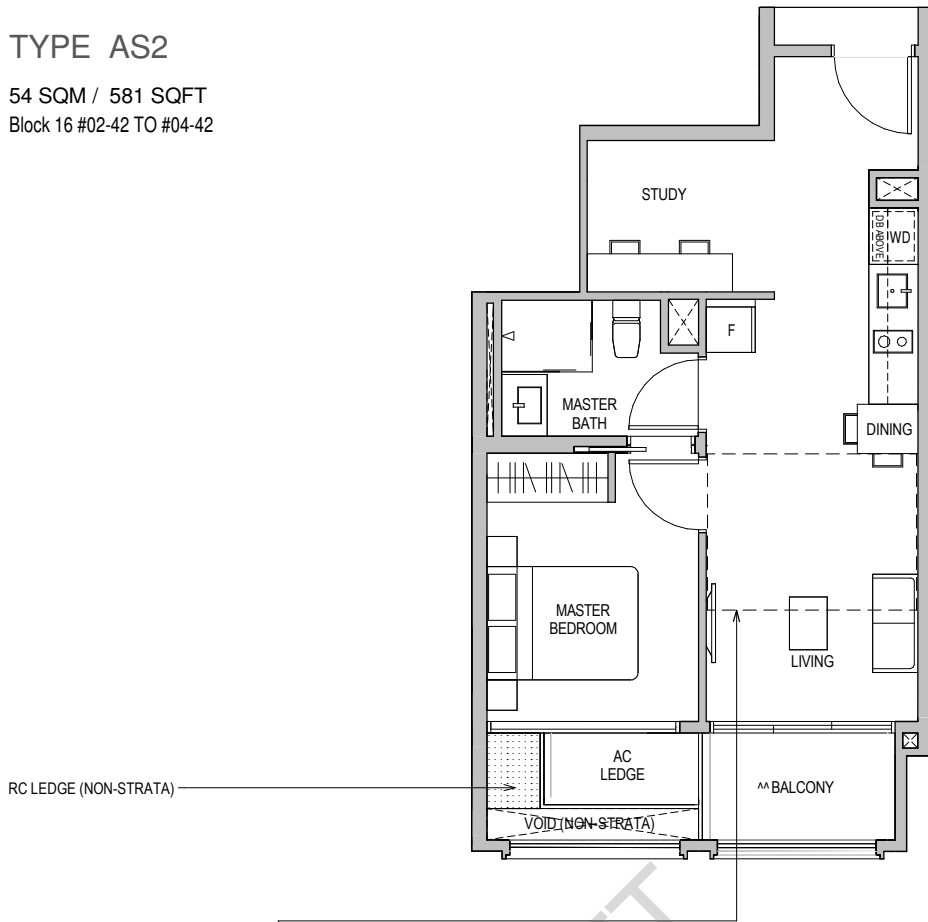
Areas include AC Ledge, Balcony, PES, and Strata Void Area (where applicable). Orientations and facings will differ depending on the unit you are purchasing, please refer to the key plan. Plans are not drawn to scale and subject to change as may be required or approved by the relevant authorities. All areas are estimates only and are subject to final survey.



TYPE AS2

54 SQM / 581 SQFT

Block 16 #02-42 TO #04-42



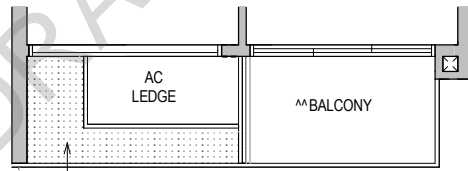
TYPE AS2H

61 SQM / 657 SQFT

** AREA IS INCLUSIVE OF STRATA VOID AREA ABOVE LIVING AS PER DOTTED LINE

Block 16 #05-42

RC LEDGE (NON-STRATA)

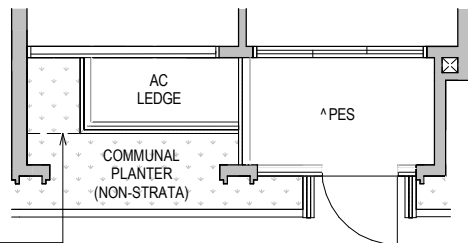


TYPE AS2 (PES)

54 SQM / 581 SQFT

Block 16 #01-42

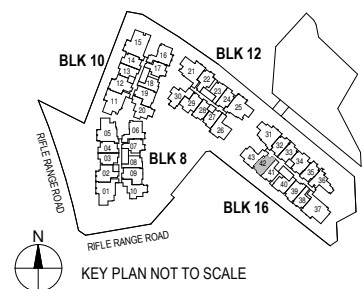
OVERHEAD RC LEDGE (NON-STRATA)



^ The PES shall not be enclosed.

** The balcony shall not be enclosed. Only approved balcony screens are to be used. For an illustration of the approved balcony screen, please refer to the diagram annexed hereto as "Annexure 1".

Areas include AC Ledge, Balcony, PES, and Strata Void Area (where applicable). Orientations and facings will differ depending on the unit you are purchasing, please refer to the key plan. Plans are not drawn to scale and subject to change as may be required or approved by the relevant authorities. All areas are estimates only and are subject to final survey.



TYPE AS3

53 SQM / 570 SQFT

Block 08 #02-03 TO #04-03*

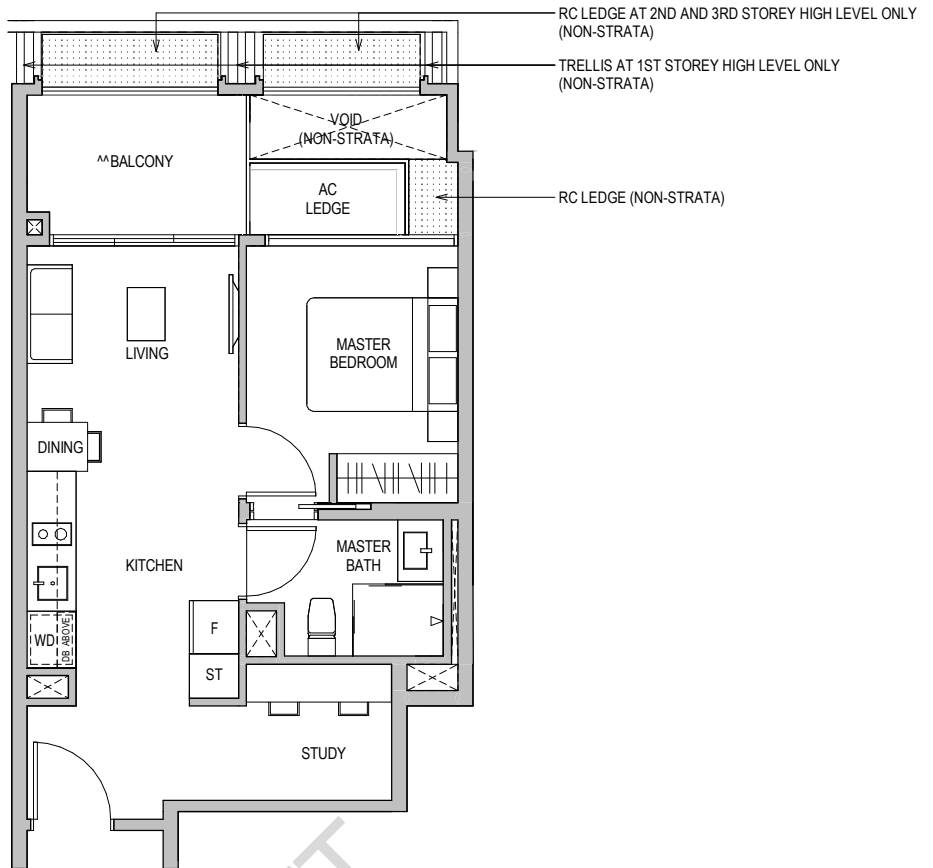
Block 08 #02-04 TO #04-04

Block 10 #02-13 TO #04-13*

Block 10 #02-14 TO #04-14

Block 12 #02-24 TO #04-24

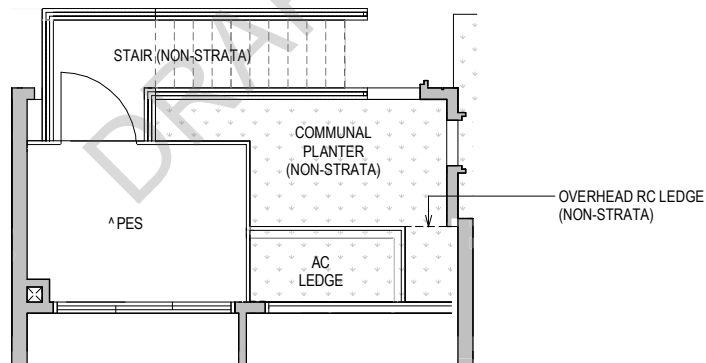
* MIRROR IMAGE



TYPE AS3 (PES)

53 SQM / 570 SQFT

Block 12 #01-24



TYPE AS3 (PES)

53 SQM / 570 SQFT

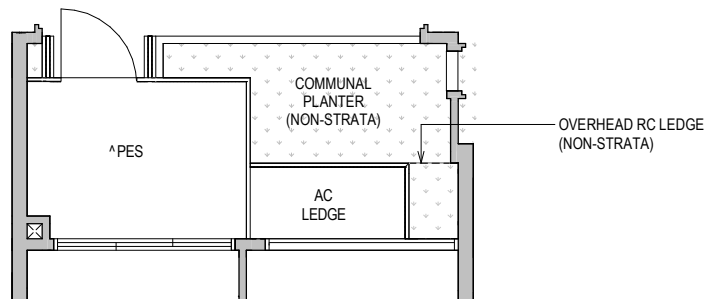
Block 08 #01-03*

Block 08 #01-04

Block 10 #01-13*

Block 10 #01-14

* MIRROR IMAGE

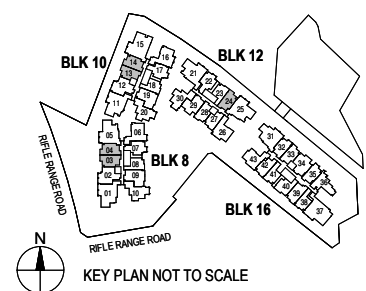


ST Storage Cabinet

^ The PES shall not be enclosed.

** The balcony shall not be enclosed. Only approved balcony screens are to be used. For an illustration of the approved balcony screen, please refer to the diagram annexed hereto as "Annexure 1".

Areas include AC Ledge, Balcony, PES, and Strata Void Area (where applicable). Orientations and facings will differ depending on the unit you are purchasing, please refer to the key plan. Plans are not drawn to scale and subject to change as may be required or approved by the relevant authorities. All areas are estimates only and are subject to final survey.



TYPE AS3H

60 SQM / 646 SQFT

** AREA IS INCLUSIVE OF STRATA VOID AREA ABOVE LIVING AS PER DOTTED LINE

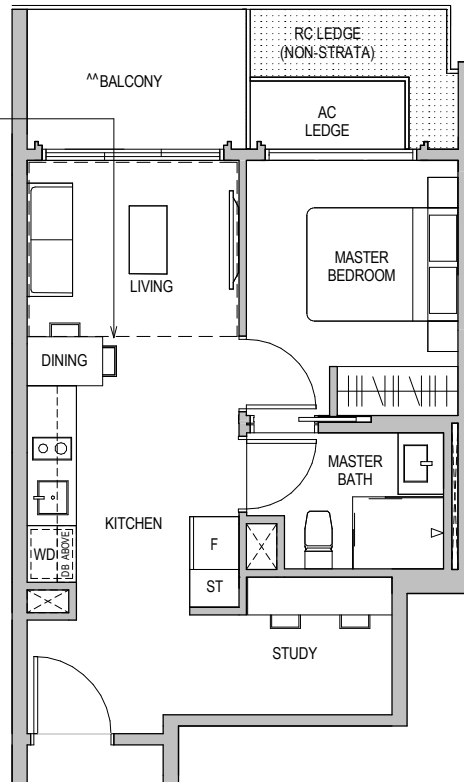
Block 08 #05-03*

Block 08 #05-04

Block 10 #05-13*

Block 10 #05-14

* MIRROR IMAGE



TYPE AS3H

60 SQM / 646 SQFT

Block 12 #05-24

** AREA IS INCLUSIVE OF STRATA VOID AREA ABOVE LIVING AS PER DOTTED LINE

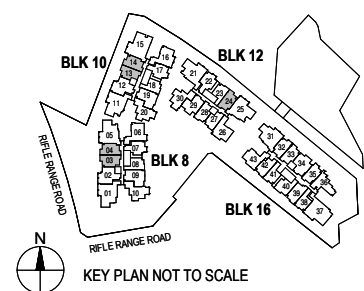


ST Storage Cabinet

^ The PES shall not be enclosed.

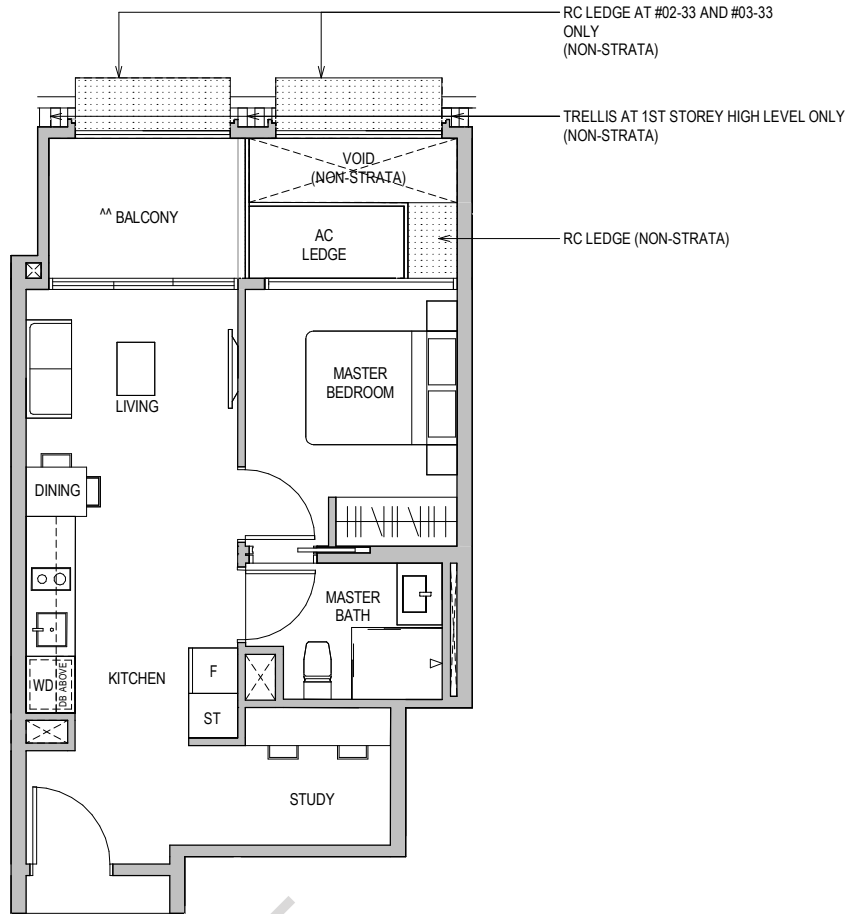
^^ The balcony shall not be enclosed. Only approved balcony screens are to be used. For an illustration of the approved balcony screen, please refer to the diagram annexed hereto as "Annexure 1".

Areas include AC Ledge, Balcony, PES, and Strata Void Area (where applicable). Orientations and facings will differ depending on the unit you are purchasing, please refer to the key plan. Plans are not drawn to scale and subject to change as may be required or approved by the relevant authorities. All areas are estimates only and are subject to final survey.



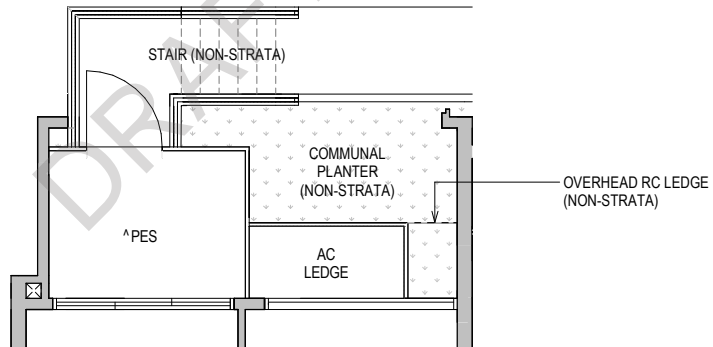
TYPE AS3a

52 SQM / 560 SQFT
 Block 16 #02-32 TO #04-32*
 Block 16 #02-33 TO #04-33
 Block 16 #02-35 TO #04-35
 * MIRROR IMAGE



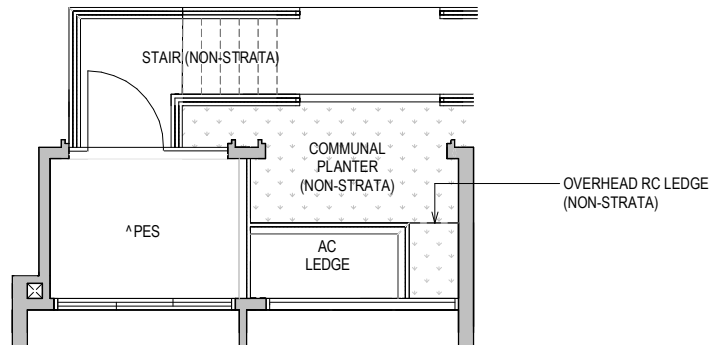
TYPE AS3a (PES)

52 SQM / 560 SQFT
 Block 16 #01-33



TYPE AS3a (PES)

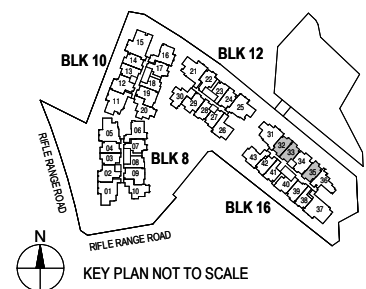
52 SQM / 560 SQFT
 Block 16 #01-35
 Block 16 #01-32*
 * MIRROR IMAGE



ST Storage Cabinet

^ The PES shall not be enclosed.
 ^^ The balcony shall not be enclosed. Only approved balcony screens are to be used. For an illustration of the approved balcony screen, please refer to the diagram annexed hereto as "Annexure 1".

Areas include AC Ledge, Balcony, PES, and Strata Void Area (where applicable). Orientations and facings will differ depending on the unit you are purchasing, please refer to the key plan. Plans are not drawn to scale and subject to change as may be required or approved by the relevant authorities. All areas are estimates only and are subject to final survey.

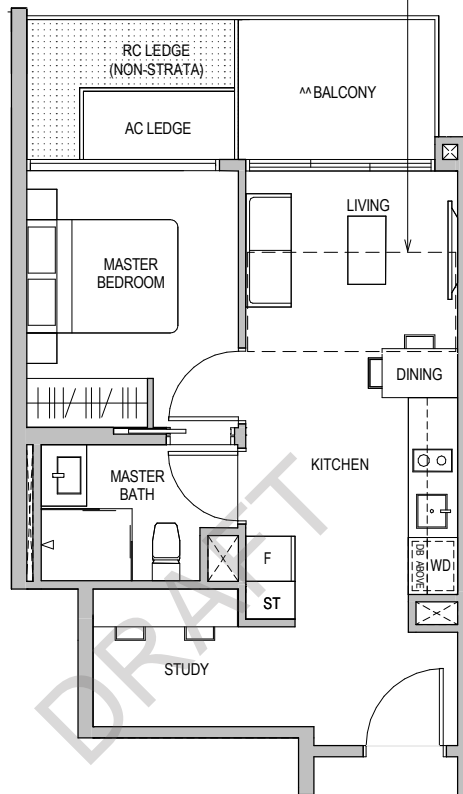


TYPE AS3a H1

57 SQM / 614 SQFT

** AREA IS INCLUSIVE OF STRATA
VOID AREA ABOVE LIVING AS PER
DOTTED LINE

Block 16 #05-32

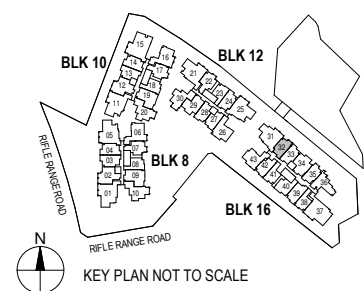


ST Storage Cabinet

^ The PES shall not be enclosed.

^^ The balcony shall not be enclosed. Only approved balcony screens are to be used.
For an illustration of the approved balcony screen, please refer to the diagram
annexed hereto as "Annexure 1".

Areas include AC Ledge, Balcony, PES, and Strata Void Area (where applicable). Orientations
and facings will differ depending on the unit you are purchasing, please refer to the key plan.
Plans are not drawn to scale and subject to change as may be required or approved by the
relevant authorities. All areas are estimates only and are subject to final survey.

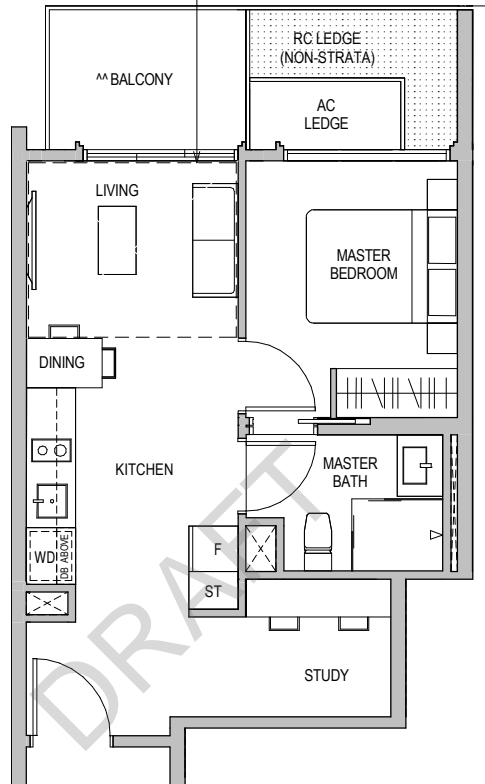


TYPE AS3a H2

59 SQM / 635 SQFT

** AREA IS INCLUSIVE OF STRATA VOID AREA ABOVE LIVING AS PER DOTTED LINE

Block 16 #05-33

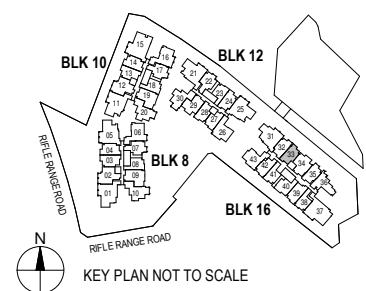


ST Storage Cabinet

^ The PES shall not be enclosed.

^^ The balcony shall not be enclosed. Only approved balcony screens are to be used. For an illustration of the approved balcony screen, please refer to the diagram annexed hereto as "Annexure 1".

Areas include AC Ledge, Balcony, PES, and Strata Void Area (where applicable). Orientations and facings will differ depending on the unit you are purchasing, please refer to the key plan. Plans are not drawn to scale and subject to change as may be required or approved by the relevant authorities. All areas are estimates only and are subject to final survey.



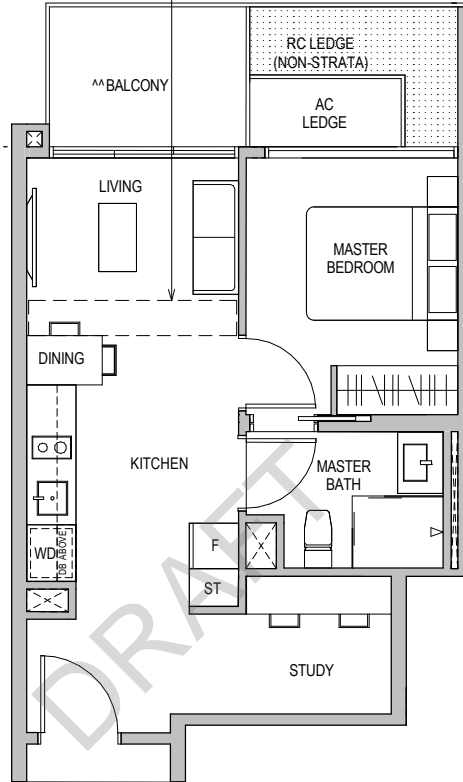
KEY PLAN NOT TO SCALE

TYPE AS3a H3

54 SQM / 581 SQFT

** AREA IS INCLUSIVE OF STRATA
VOID AREA ABOVE LIVING AS PER
DOTTED LINE

Block 16 #05-35

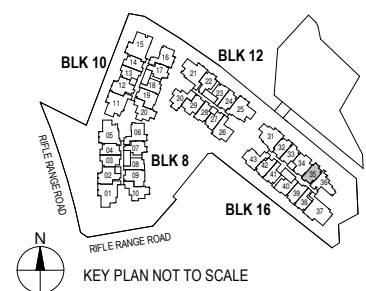


ST Storage Cabinet

^ The PES shall not be enclosed.

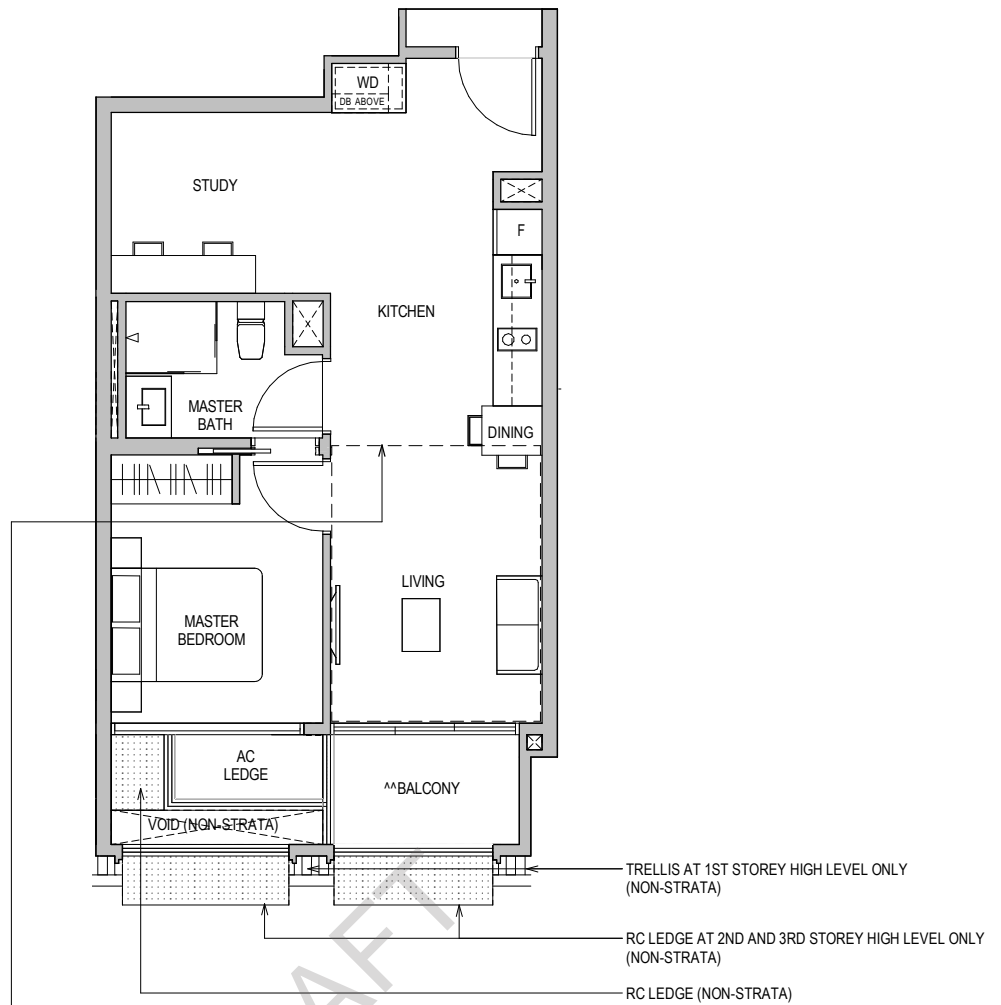
^^ The balcony shall not be enclosed. Only approved balcony screens are to be used. For an illustration of the approved balcony screen, please refer to the diagram annexed hereto as "Annexure 1".

Areas include AC Ledge, Balcony, PES, and Strata Void Area (where applicable). Orientations and facings will differ depending on the unit you are purchasing, please refer to the key plan. Plans are not drawn to scale and subject to change as may be required or approved by the relevant authorities. All areas are estimates only and are subject to final survey.



TYPE AS4

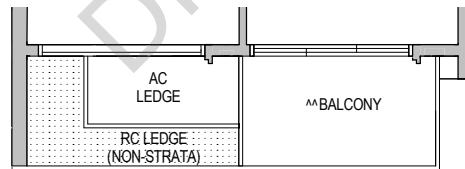
59 SQM / 635 SQFT
Block 16 #02-39 TO #04-39



TYPE AS4 H

70 SQM / 753 SQFT

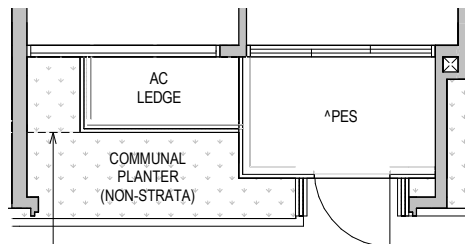
** AREA IS INCLUSIVE OF STRATA VOID AREA ABOVE LIVING AND DINING AS PER DOTTED LINE
Block 16 #05-39



TYPE AS4 (PES)

59 SQM / 635 SQFT
Block 16 #01-39

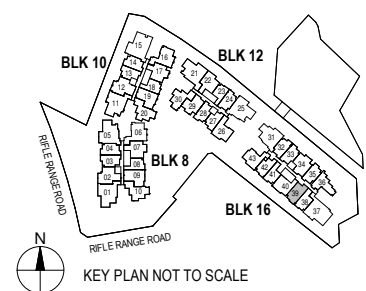
OVERHEAD RC LEDGE



^ The PES shall not be enclosed.

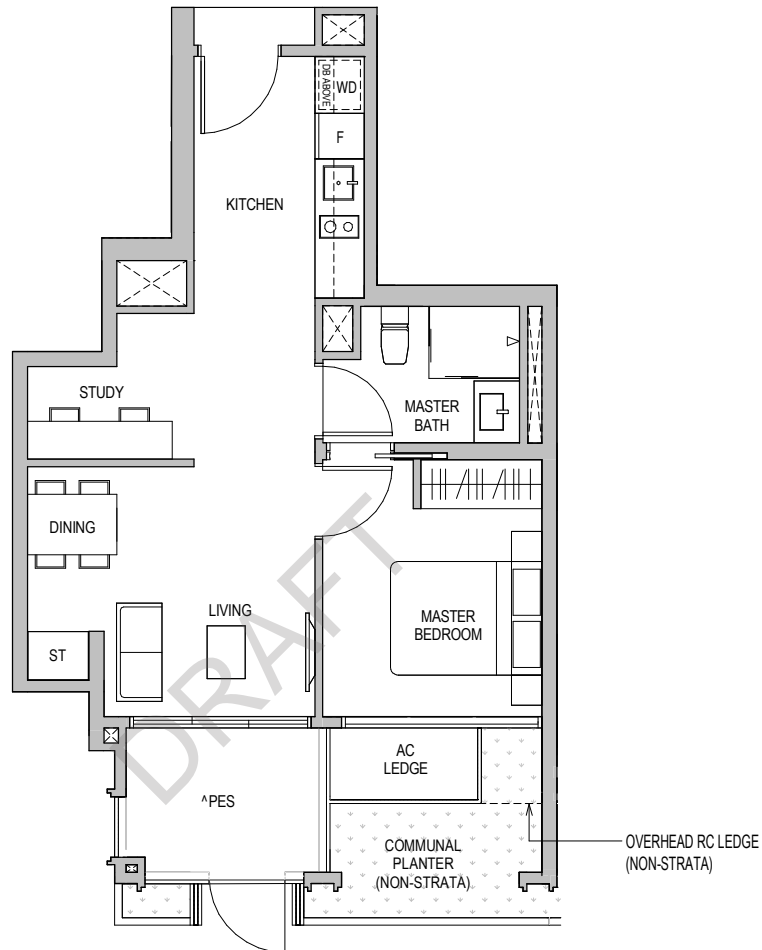
^^ The balcony shall not be enclosed. Only approved balcony screens are to be used. For an illustration of the approved balcony screen, please refer to the diagram annexed hereto as "Annexure 1".

Areas include AC Ledge, Balcony, PES, and Strata Void Area (where applicable). Orientations and facings will differ depending on the unit you are purchasing, please refer to the key plan. Plans are not drawn to scale and subject to change as may be required or approved by the relevant authorities. All areas are estimates only and are subject to final survey.



TYPE AS5 (PES)

55 SQM / 592 SQFT
 Block 08 #01-07
 Block 10 #01-17

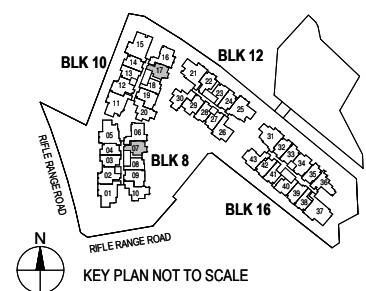


ST Storage Cabinet

^ The PES shall not be enclosed.

^^ The balcony shall not be enclosed. Only approved balcony screens are to be used. For an illustration of the approved balcony screen, please refer to the diagram annexed hereto as "Annexure 1".

Areas include AC Ledge, Balcony, PES, and Strata Void Area (where applicable). Orientations and facings will differ depending on the unit you are purchasing, please refer to the key plan. Plans are not drawn to scale and subject to change as may be required or approved by the relevant authorities. All areas are estimates only and are subject to final survey.

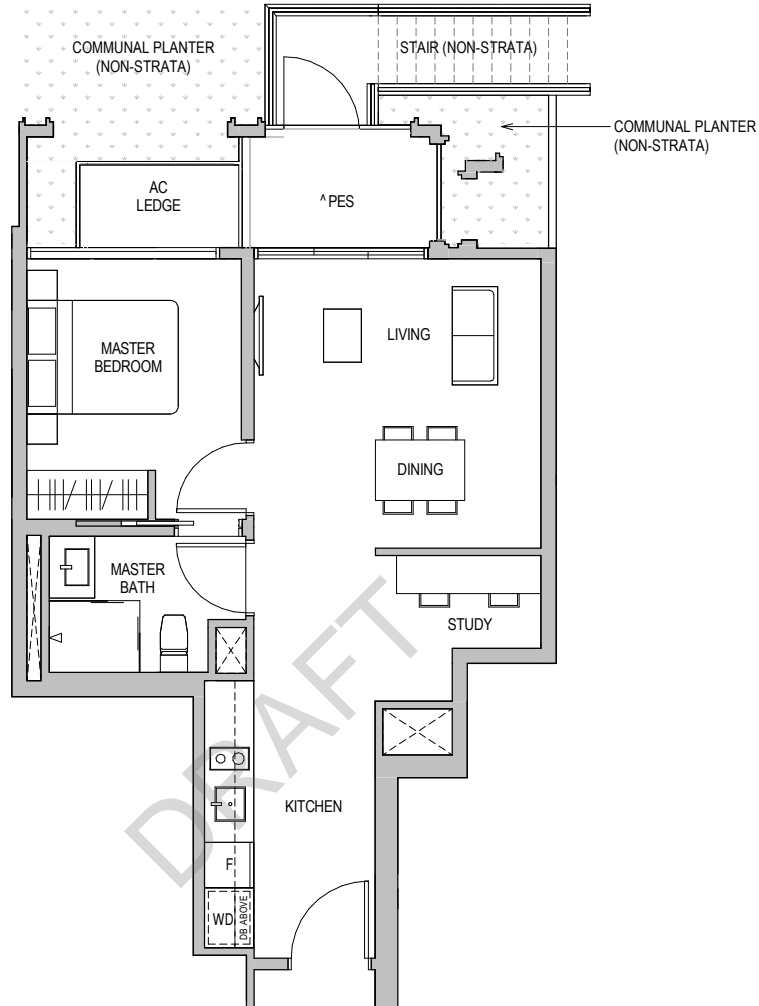


KEY PLAN NOT TO SCALE

TYPE AS6 (PES)

57 SQM / 614 SQFT

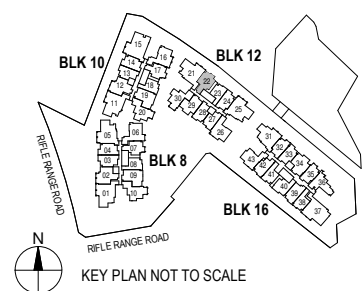
Block 12 #01-22



^ The PES shall not be enclosed.

^^ The balcony shall not be enclosed. Only approved balcony screens are to be used. For an illustration of the approved balcony screen, please refer to the diagram annexed hereto as "Annexure 1".

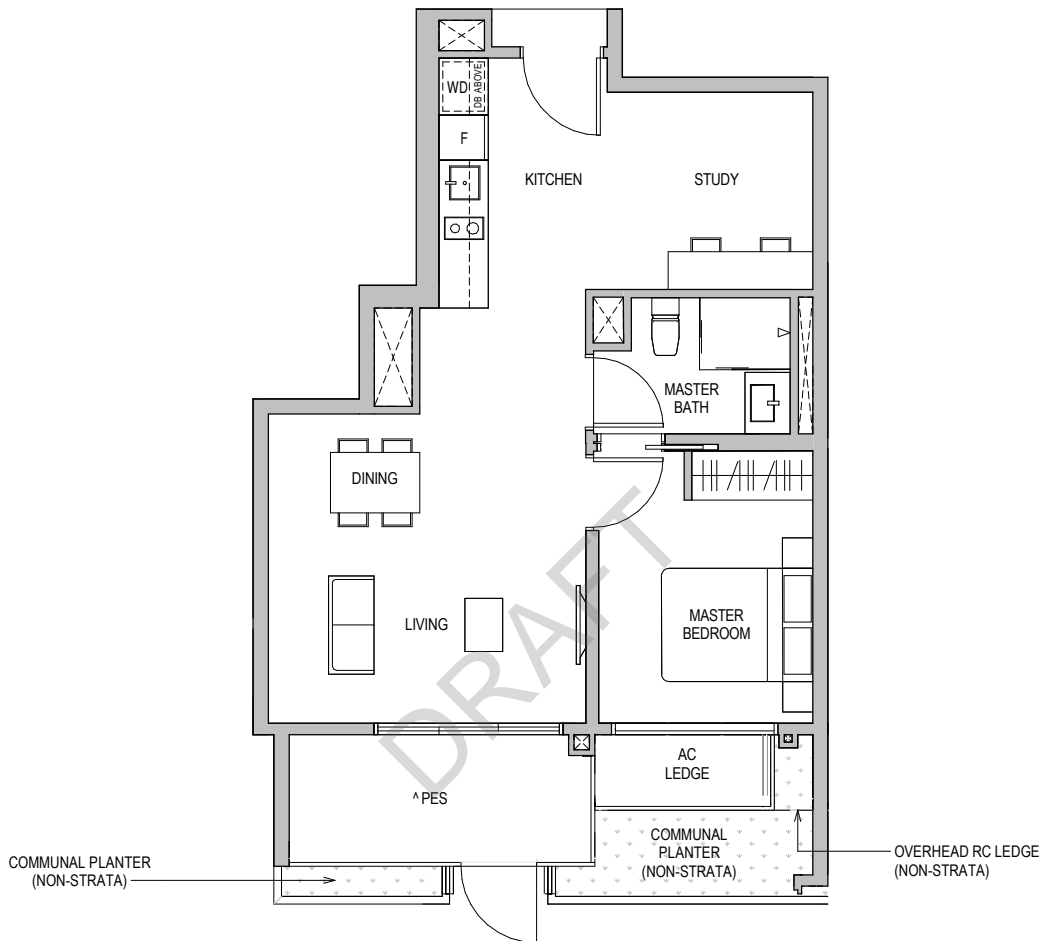
Areas include AC Ledge, Balcony, PES, and Strata Void Area (where applicable). Orientations and facings will differ depending on the unit you are purchasing, please refer to the key plan. Plans are not drawn to scale and subject to change as may be required or approved by the relevant authorities. All areas are estimates only and are subject to final survey.



TYPE AS7 (PES)

65 SQM / 700 SQFT

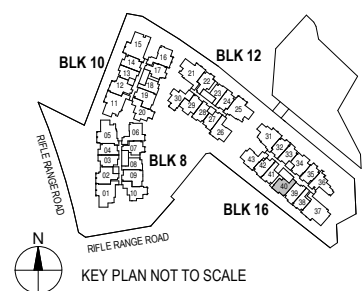
Block 16 #01-40



^ The PES shall not be enclosed.

^^ The balcony shall not be enclosed. Only approved balcony screens are to be used. For an illustration of the approved balcony screen, please refer to the diagram annexed hereto as "Annexure 1".

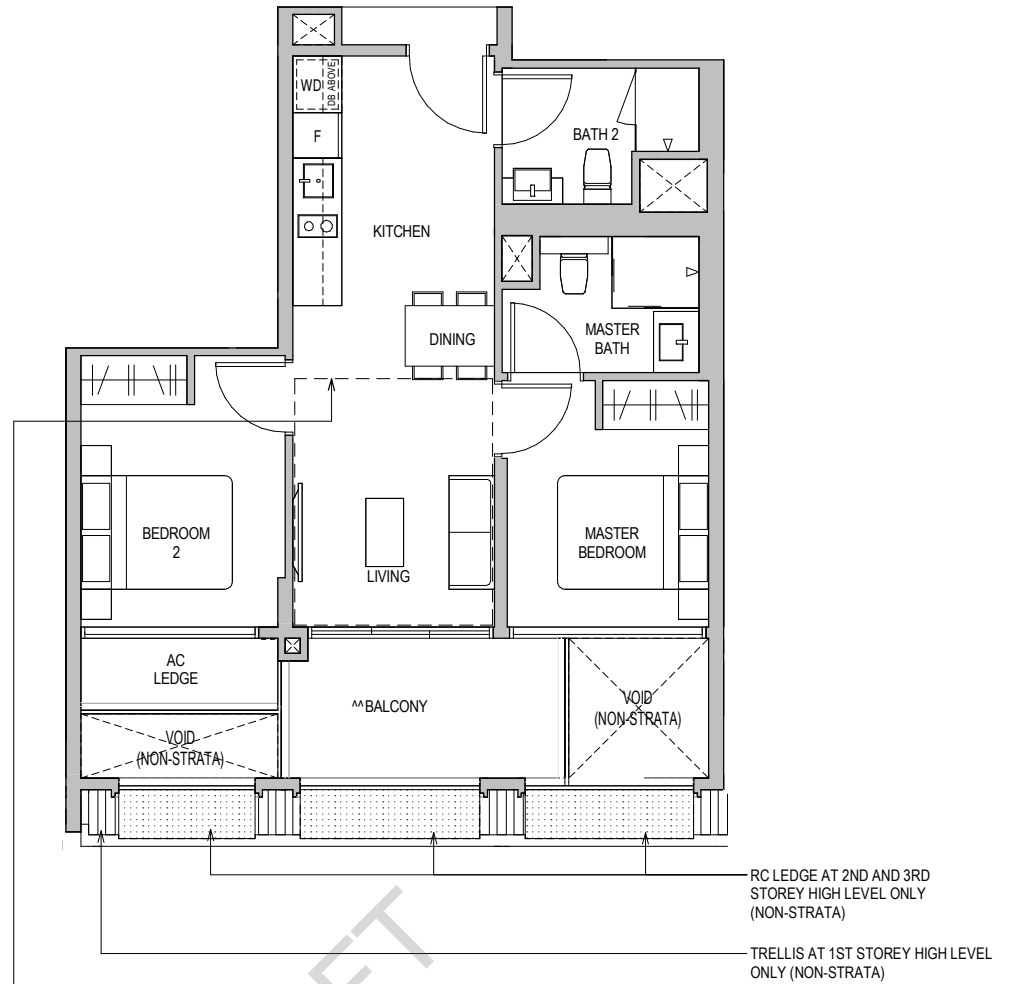
Areas include AC Ledge, Balcony, PES, and Strata Void Area (where applicable). Orientations and facings will differ depending on the unit you are purchasing, please refer to the key plan. Plans are not drawn to scale and subject to change as may be required or approved by the relevant authorities. All areas are estimates only and are subject to final survey.



KEY PLAN NOT TO SCALE

TYPE B1

66 SQM / 710 SQFT
Block 12 #02-29 TO #04-29

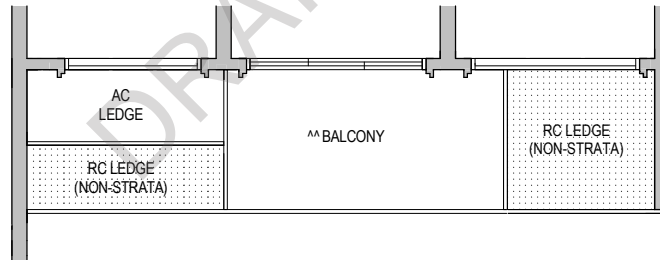


TYPE B1H

76 SQM / 818 SQFT

** AREA IS INCLUSIVE OF STRATA VOID AREA ABOVE LIVING AND DINING AS PER DOTTED LINE

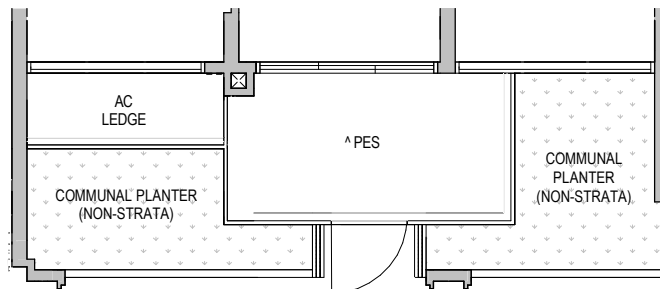
Block 12 #05-29



TYPE B1 (PES)

66 SQM / 710 SQFT

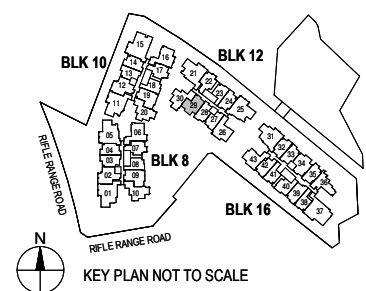
Block 12 #01-29



^ The PES shall not be enclosed.

^^ The balcony shall not be enclosed. Only approved balcony screens are to be used. For an illustration of the approved balcony screen, please refer to the diagram annexed hereto as "Annexure 1".

Areas include AC Ledge, Balcony, PES, and Strata Void Area (where applicable). Orientations and facings will differ depending on the unit you are purchasing, please refer to the key plan. Plans are not drawn to scale and subject to change as may be required or approved by the relevant authorities. All areas are estimates only and are subject to final survey.



TYPE B2

70 SQM / 753 SQFT
 Block 08 #02-07 TO #04-07
 Block 10 #02-17 TO #04-17

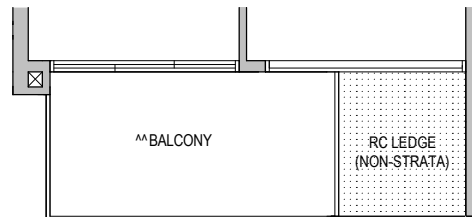


TYPE B2H

76 SQM / 818 SQFT

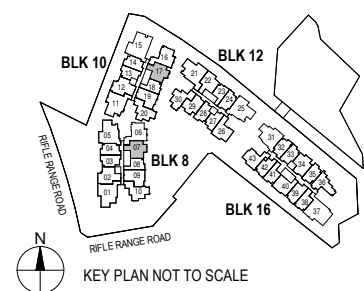
** AREA IS INCLUSIVE OF STRATA VOID AREA ABOVE LIVING AS PER DOTTED LINE

Block 08 #05-07
 Block 10 #05-17



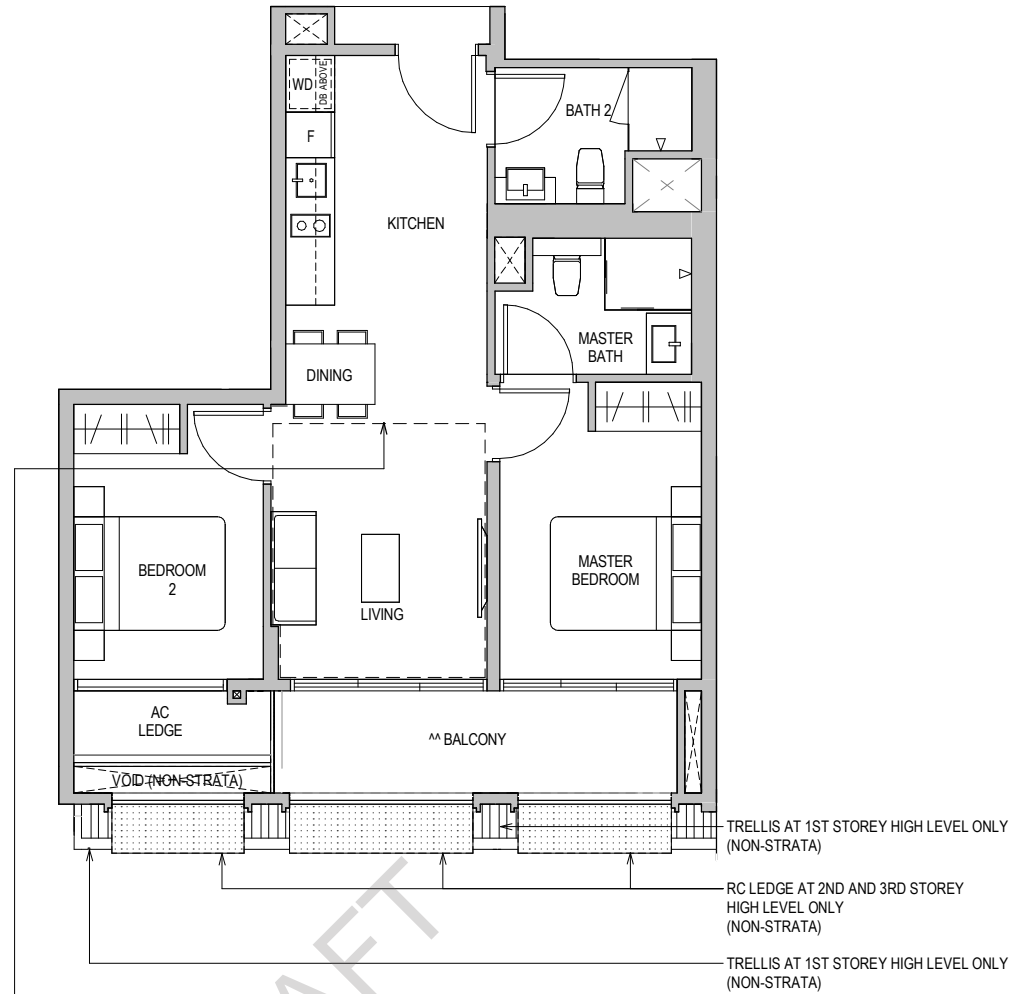
^ The PES shall not be enclosed.
 ^^ The balcony shall not be enclosed. Only approved balcony screens are to be used. For an illustration of the approved balcony screen, please refer to the diagram annexed hereto as "Annexure 1".

Areas include AC Ledge, Balcony, PES, and Strata Void Area (where applicable). Orientations and facings will differ depending on the unit you are purchasing, please refer to the key plan. Plans are not drawn to scale and subject to change as may be required or approved by the relevant authorities. All areas are estimates only and are subject to final survey.



TYPE B3

70 SQM / 753 SQFT
 Block 08 #02-09 TO #04-09
 Block 10 #02-19 TO #04-19

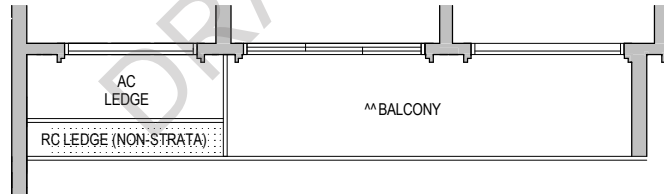


TYPE B3H

80 SQM / 861 SQFT

** AREA IS INCLUSIVE OF STRATA VOID AREA ABOVE LIVING AS PER DOTTED LINE

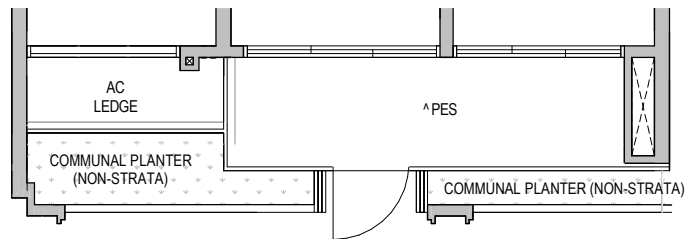
Block 08 #05-09
 Block 10 #05-19



TYPE B3 (PES)

70 SQM / 753 SQFT

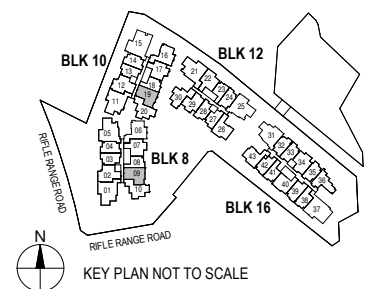
Block 08 #01-09
 Block 10 #01-19



^ The PES shall not be enclosed.

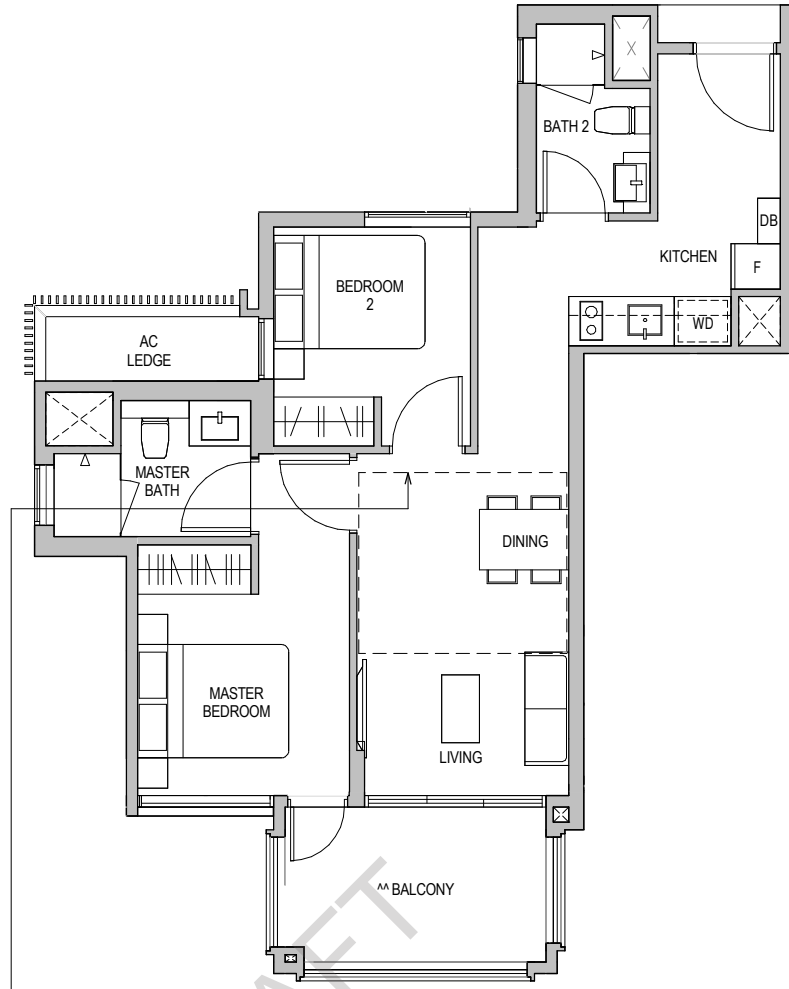
^^ The balcony shall not be enclosed. Only approved balcony screens are to be used. For an illustration of the approved balcony screen, please refer to the diagram annexed hereto as "Annexure 1".

Areas include AC Ledge, Balcony, PES, and Strata Void Area (where applicable). Orientations and facings will differ depending on the unit you are purchasing, please refer to the key plan. Plans are not drawn to scale and subject to change as may be required or approved by the relevant authorities. All areas are estimates only and are subject to final survey.



TYPE B4

70 SQM / 753 SQFT
Block 12 #02-30 TO #04-30

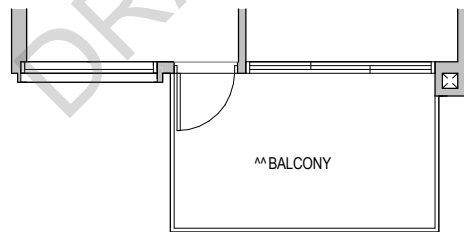


TYPE B4H

78 SQM / 840 SQFT

** AREA IS INCLUSIVE OF STRATA
VOID AREA ABOVE LIVING AND
DINING AS PER DOTTED LINE

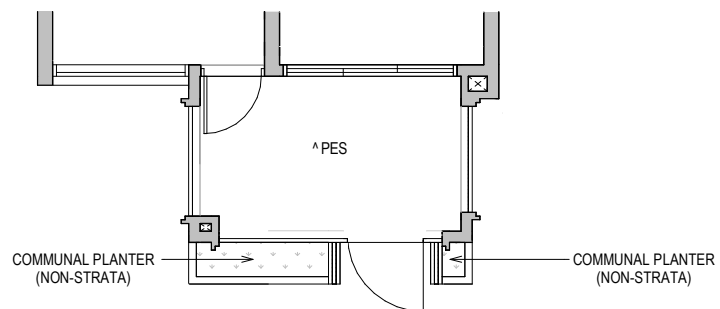
Block 12 #05-30



TYPE B4 (PES)

70 SQM / 753 SQFT

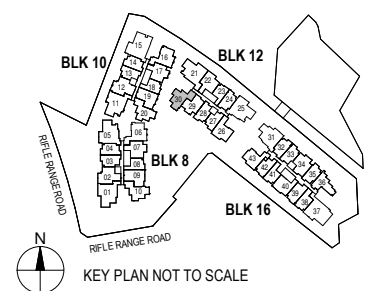
Block 12 #01-30



^ The PES shall not be enclosed.

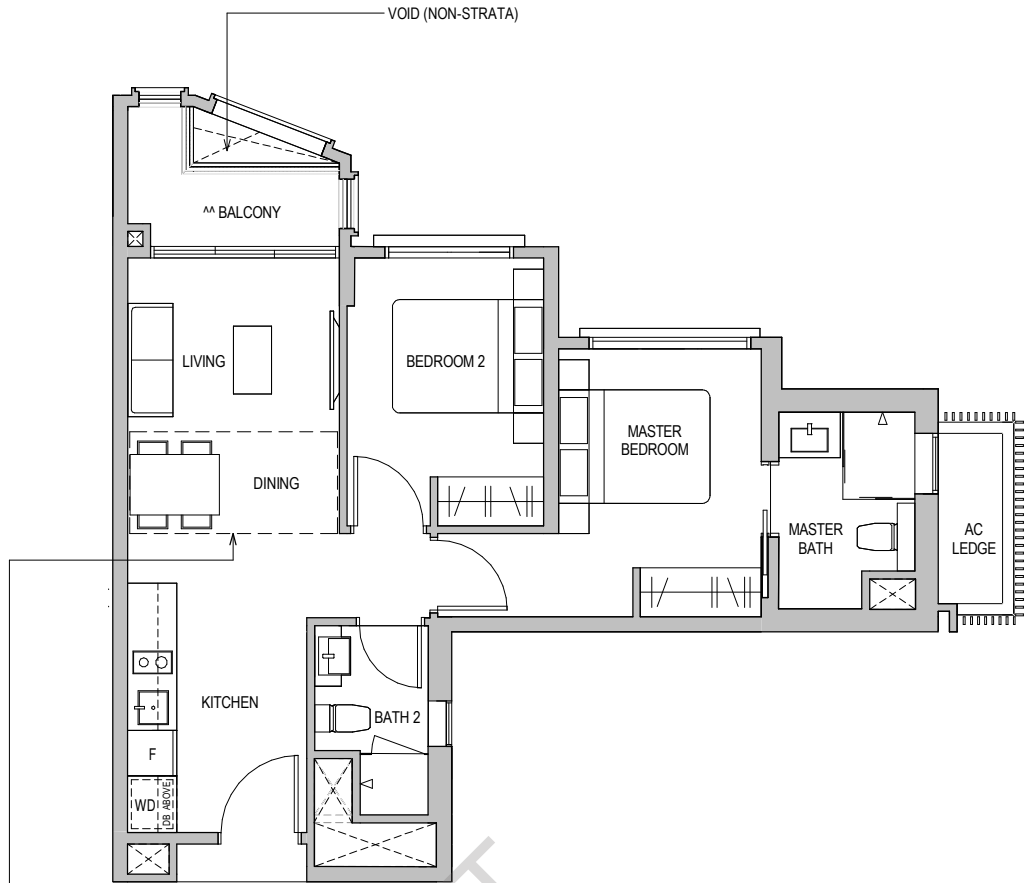
^^ The balcony shall not be enclosed. Only approved balcony screens are to be used. For an illustration of the approved balcony screen, please refer to the diagram annexed hereto as "Annexure 1".

Areas include AC Ledge, Balcony, PES, and Strata Void Area (where applicable). Orientations and facings will differ depending on the unit you are purchasing, please refer to the key plan. Plans are not drawn to scale and subject to change as may be required or approved by the relevant authorities. All areas are estimates only and are subject to final survey.



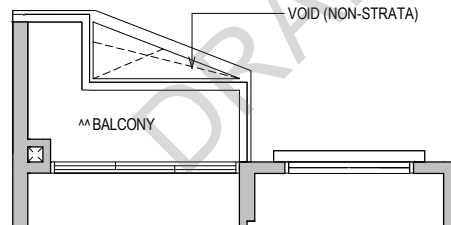
TYPE B5

66 SQM / 710 SQFT
Block 16 #02-36 TO #04-36



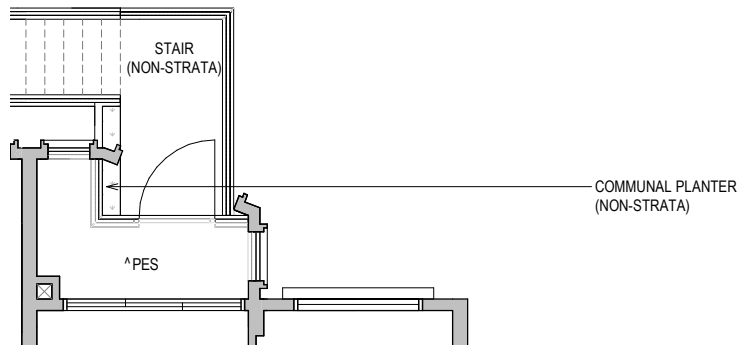
TYPE B5H

71 SQM / 764 SQFT
** AREA IS INCLUSIVE OF STRATA VOID AREA ABOVE DINING AS PER DOTTED LINE
Block 16 #05-36



TYPE B5 (PES)

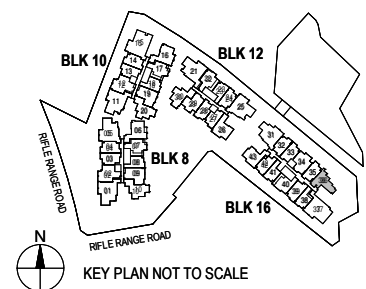
66 SQM / 710 SQFT
Block 16 #01-36



^ The PES shall not be enclosed.

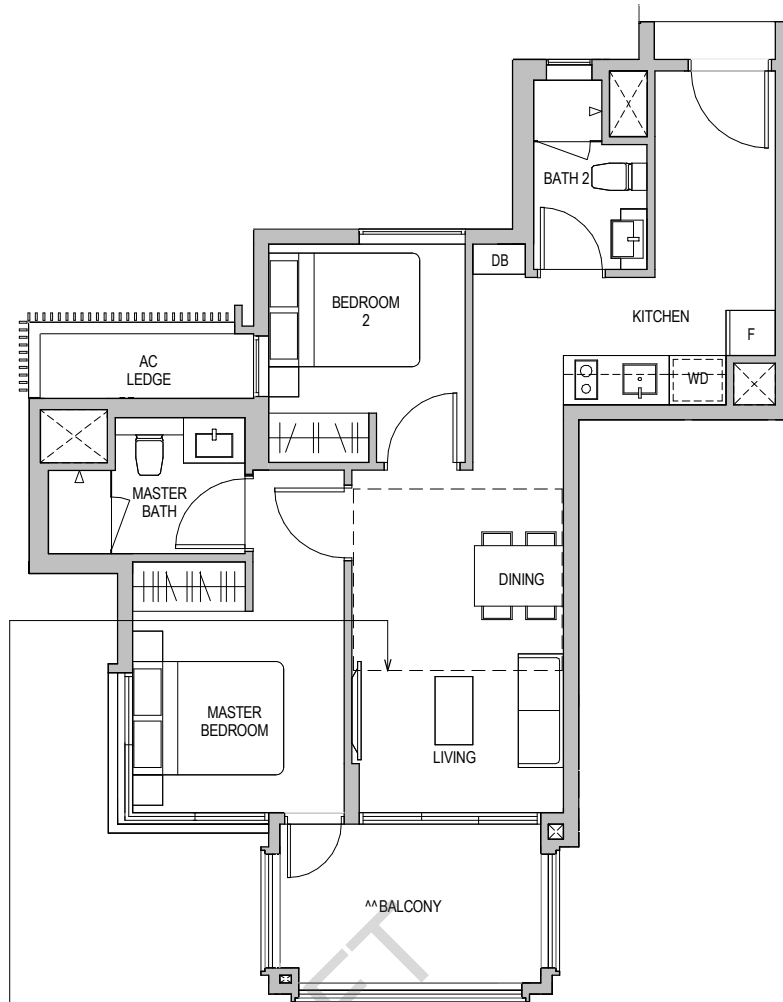
^^ The balcony shall not be enclosed. Only approved balcony screens are to be used. For an illustration of the approved balcony screen, please refer to the diagram annexed hereto as "Annexure 1".

Areas include AC Ledge, Balcony, PES, and Strata Void Area (where applicable). Orientations and facings will differ depending on the unit you are purchasing, please refer to the key plan. Plans are not drawn to scale and subject to change as may be required or approved by the relevant authorities. All areas are estimates only and are subject to final survey.



TYPE B6

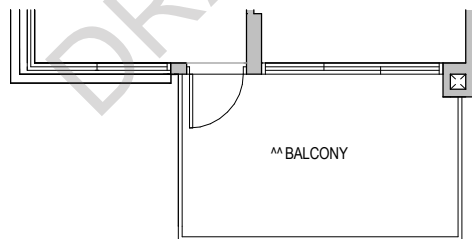
71 SQM / 764 SQFT
 Block 08 #02-10 TO #04-10
 Block 10 #02-20 TP #04-20



TYPE B6H

78 SQM / 840 SQFT

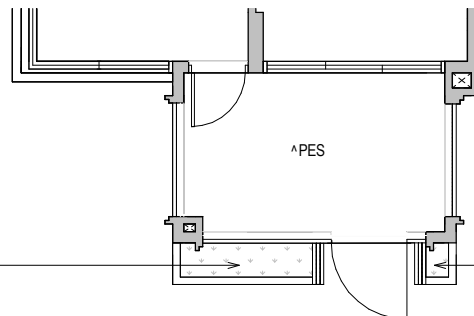
** AREA IS INCLUSIVE OF STRATA VOID AREA ABOVE LIVING AND DINING AS PER DOTTED LINE
 Block 08 #05-10
 Block 10 #05-20



TYPE B6 (PES)

71 SQM / 764 SQFT

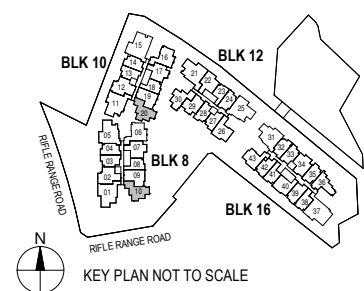
Block 08 #01-10
 Block 10 #01-20



^ The PES shall not be enclosed.

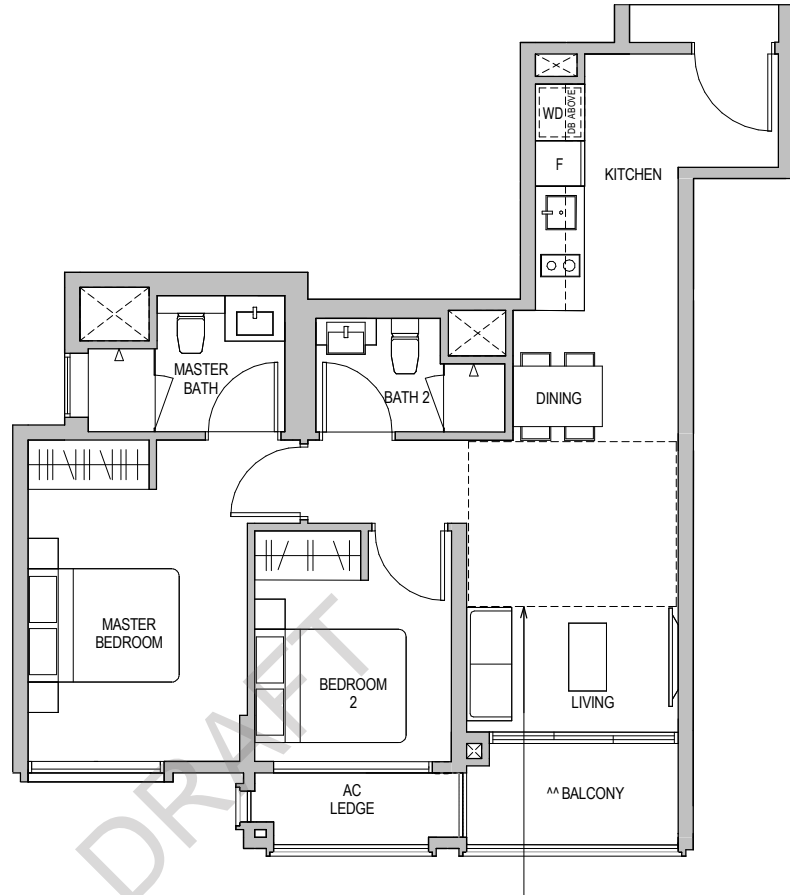
^^ The balcony shall not be enclosed. Only approved balcony screens are to be used. For an illustration of the approved balcony screen, please refer to the diagram annexed hereto as "Annexure 1".

Areas include AC Ledge, Balcony, PES, and Strata Void Area (where applicable). Orientations and facings will differ depending on the unit you are purchasing, please refer to the key plan. Plans are not drawn to scale and subject to change as may be required or approved by the relevant authorities. All areas are estimates only and are subject to final survey.



TYPE B7

70 SQM / 753 SQFT
Block 16 #02-43 to #04-43

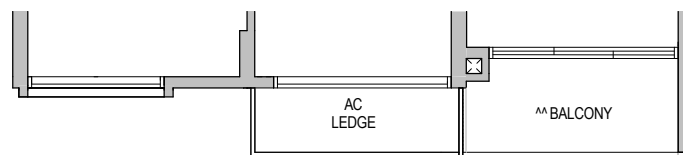


TYPE B7H

77 SQM / 829 SQFT

** AREA IS INCLUSIVE OF STRATA
VOID AREA ABOVE LIVING AS PER
DOTTED LINE

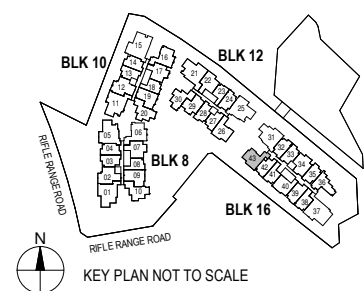
Block 16 #05-43



^ The PES shall not be enclosed.

^^ The balcony shall not be enclosed. Only approved balcony screens are to be used. For an illustration of the approved balcony screen, please refer to the diagram annexed hereto as "Annexure 1".

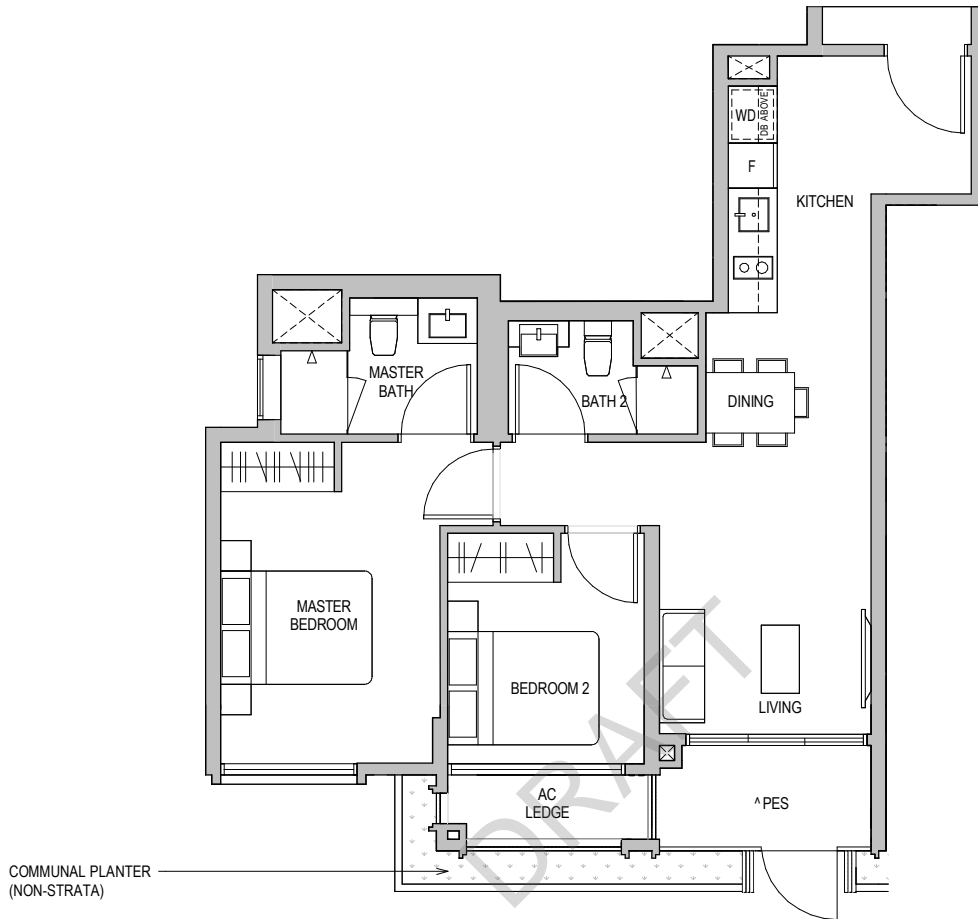
Areas include AC Ledge, Balcony, PES, and Strata Void Area (where applicable). Orientations and facings will differ depending on the unit you are purchasing, please refer to the key plan. Plans are not drawn to scale and subject to change as may be required or approved by the relevant authorities. All areas are estimates only and are subject to final survey.



TYPE B7 (PES)

70 SQM / 753 SQFT

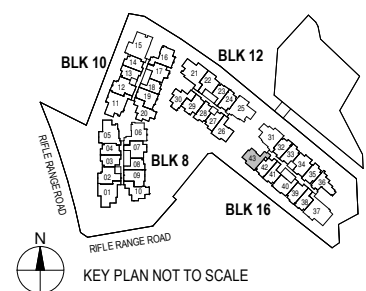
Block 16 #01-43



^ The PES shall not be enclosed.

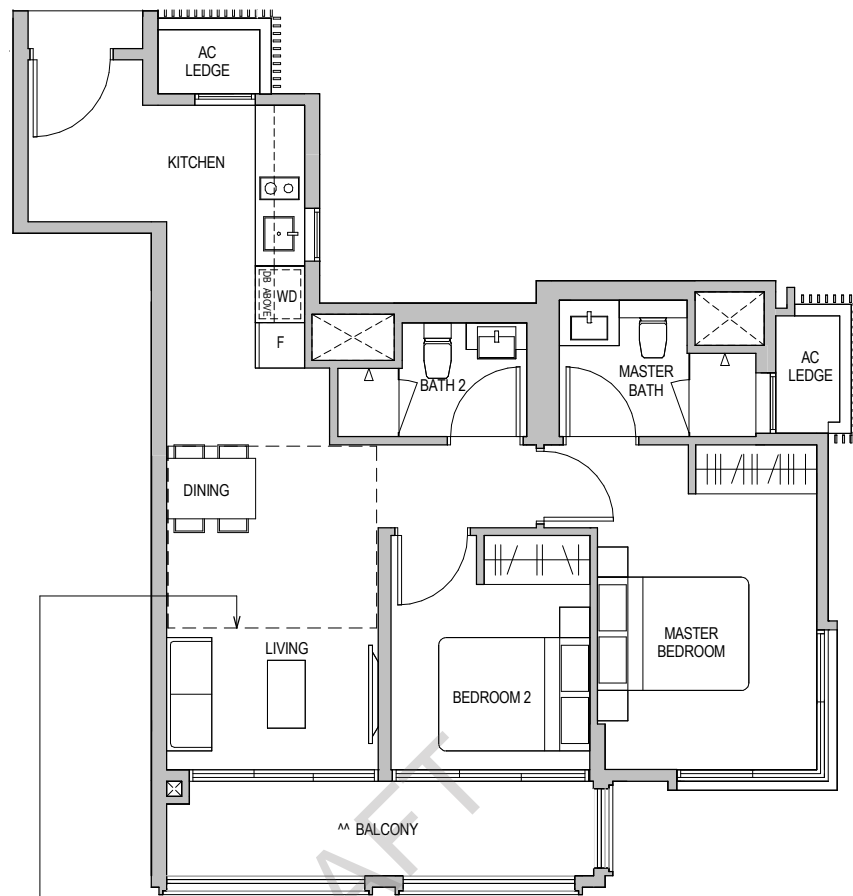
^^ The balcony shall not be enclosed. Only approved balcony screens are to be used. For an illustration of the approved balcony screen, please refer to the diagram annexed hereto as "Annexure 1".

Areas include AC Ledge, Balcony, PES, and Strata Void Area (where applicable). Orientations and facings will differ depending on the unit you are purchasing, please refer to the key plan. Plans are not drawn to scale and subject to change as may be required or approved by the relevant authorities. All areas are estimates only and are subject to final survey.



TYPE B8

76 SQM / 818 SQFT
Block 10 #02-16 TO #04-16

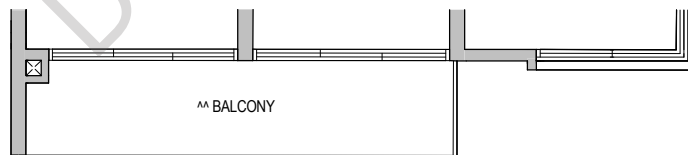


TYPE B8H

84 SQM / 904 SQFT

** AREA IS INCLUSIVE OF STRATA VOID AREA ABOVE LIVING AND DINING AS PER DOTTED LINE

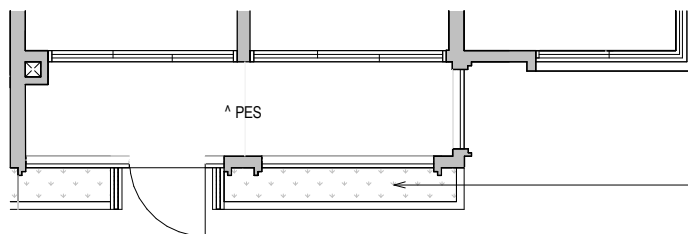
Block 10 #05-16



TYPE B8 (PES)

76 SQM / 818 SQFT

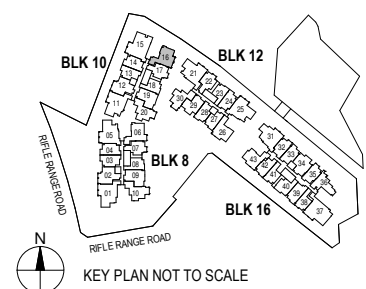
Block 10 #01-16



^ The PES shall not be enclosed.

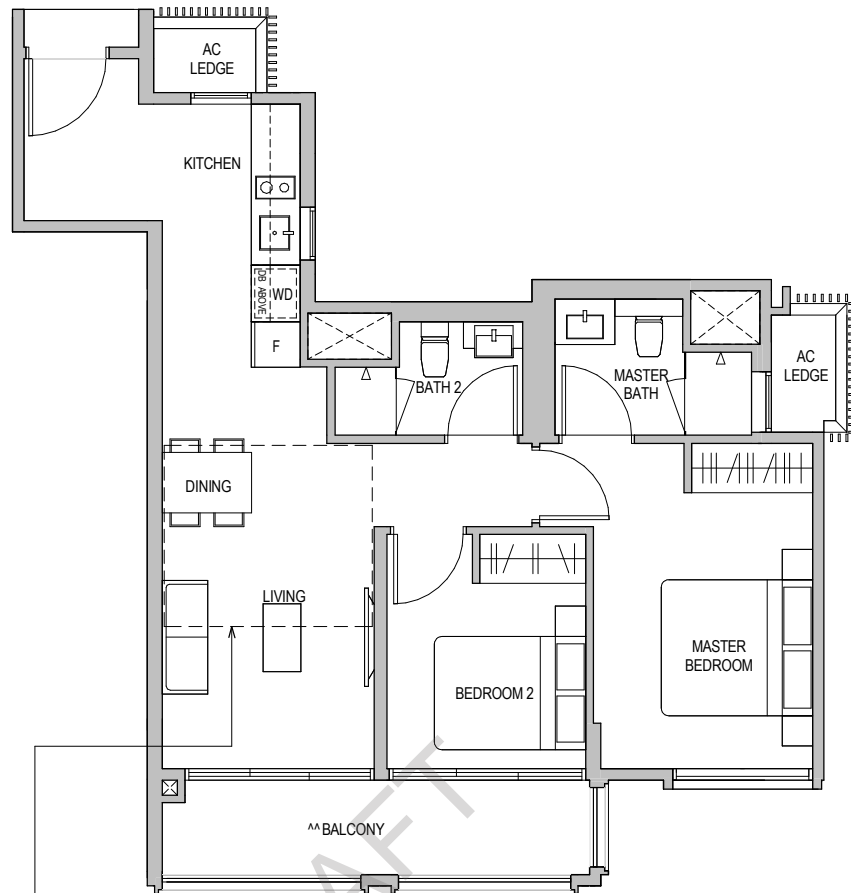
** The balcony shall not be enclosed. Only approved balcony screens are to be used. For an illustration of the approved balcony screen, please refer to the diagram annexed hereto as "Annexure 1".

Areas include AC Ledge, Balcony, PES, and Strata Void Area (where applicable). Orientations and facings will differ depending on the unit you are purchasing, please refer to the key plan. Plans are not drawn to scale and subject to change as may be required or approved by the relevant authorities. All areas are estimates only and are subject to final survey.



TYPE B8a

76 SQM / 818 SQFT
Block 08 #02-06 TO #04-06

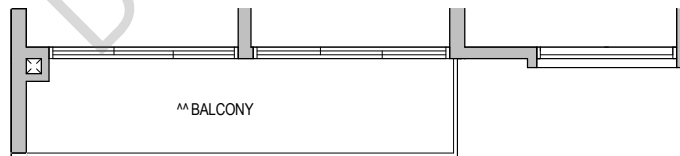


TYPE B8aH

84 SQM / 904 SQFT

** AREA IS INCLUSIVE OF STRATA VOID AREA ABOVE LIVING & DINING AS PER DOTTED LINE

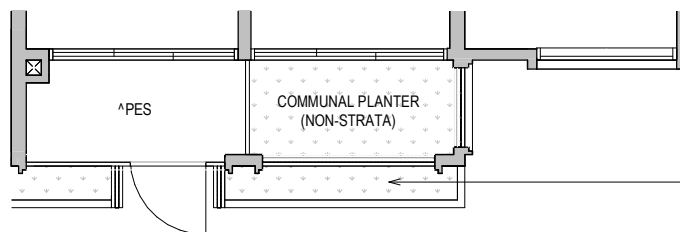
Block 08 #05-06



TYPE B8a (PES)

72 SQM / 775 SQFT

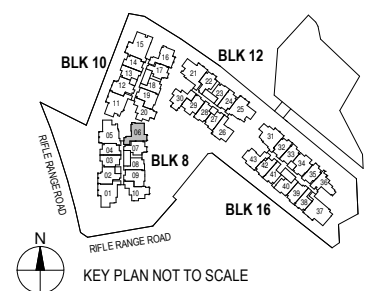
Block 08 #01-06



^ The PES shall not be enclosed.

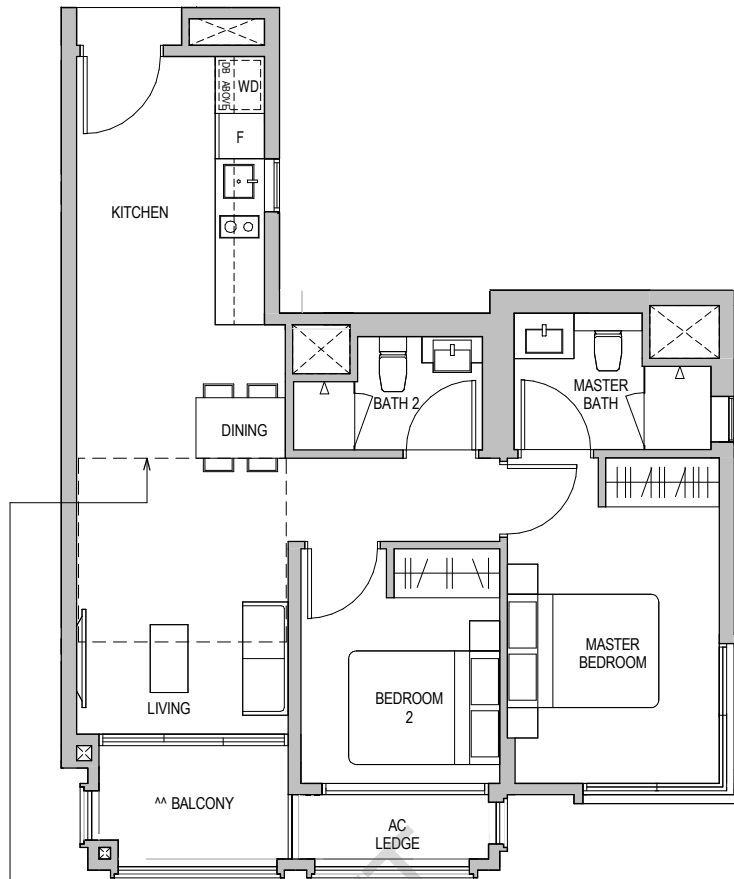
^^ The balcony shall not be enclosed. Only approved balcony screens are to be used. For an illustration of the approved balcony screen, please refer to the diagram annexed hereto as "Annexure 1".

Areas include AC Ledge, Balcony, PES, and Strata Void Area (where applicable). Orientations and facings will differ depending on the unit you are purchasing, please refer to the key plan. Plans are not drawn to scale and subject to change as may be required or approved by the relevant authorities. All areas are estimates only and are subject to final survey.



TYPE B9

71 SQM / 764 SQFT
Block 12 #02-26 TO #04-26

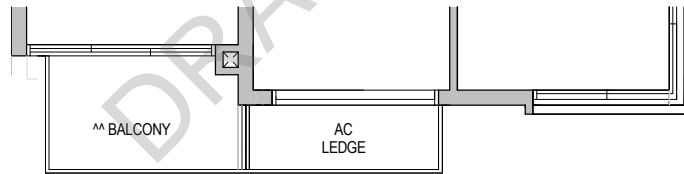


TYPE B9H

79 SQM / 850 SQFT

** AREA IS INCLUSIVE OF STRATA
VOID AREA ABOVE LIVING &
DINING AS PER DOTTED LINE

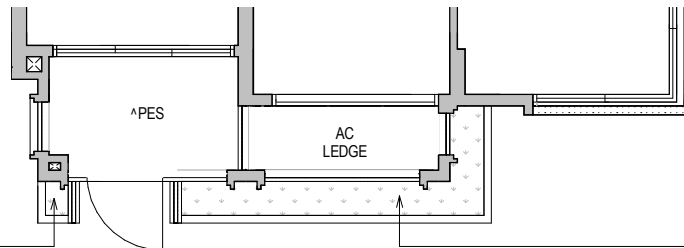
Block 12 #05-26



TYPE B9 (PES)

71 SQM / 764 SQFT

Block 12 #01-26



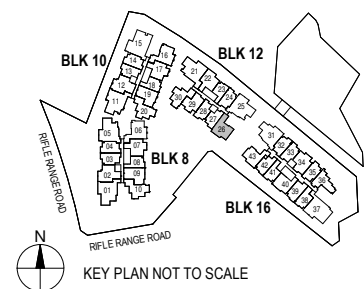
COMMUNAL PLANTER
(NON-STRATA)

COMMUNAL PLANTER
(NON-STRATA)

^ The PES shall not be enclosed.

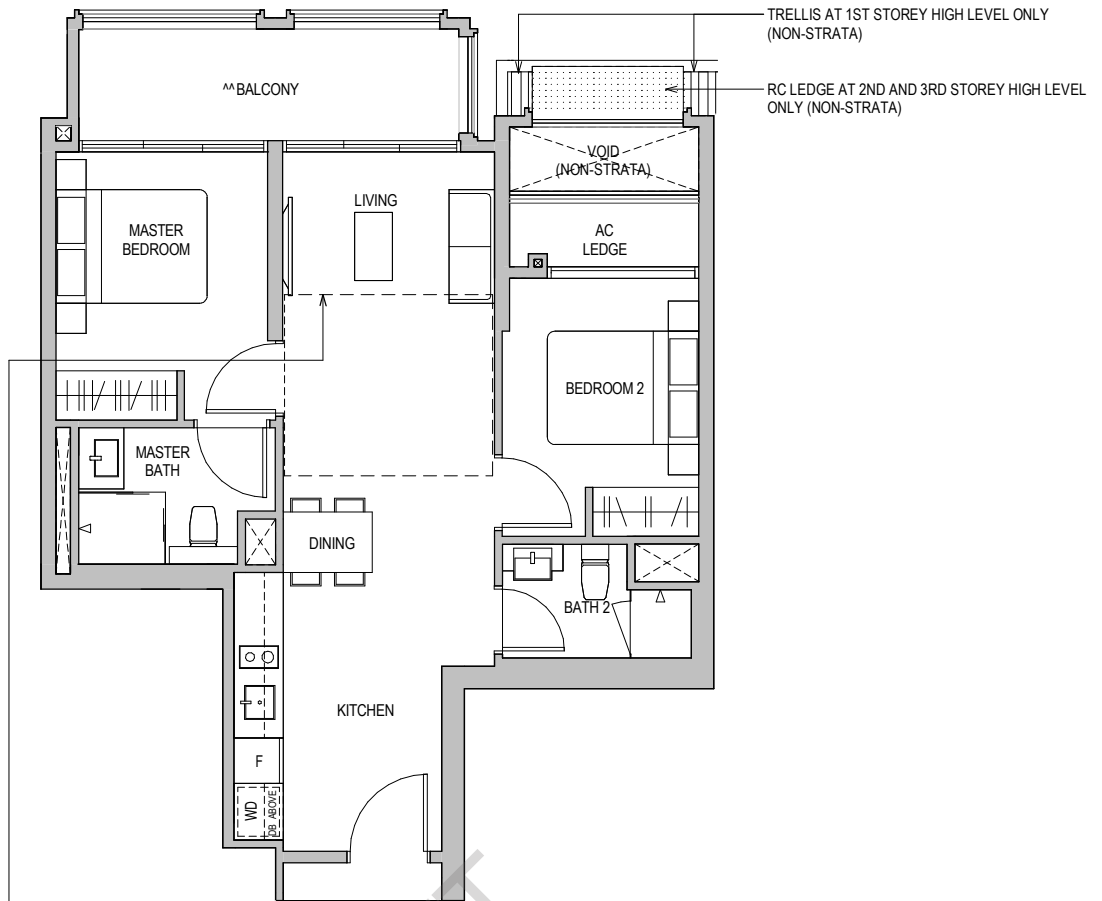
^^ The balcony shall not be enclosed. Only approved balcony screens are to be used. For an illustration of the approved balcony screen, please refer to the diagram annexed hereto as "Annexure 1".

Areas include AC Ledge, Balcony, PES, and Strata Void Area (where applicable). Orientations and facings will differ depending on the unit you are purchasing, please refer to the key plan. Plans are not drawn to scale and subject to change as may be required or approved by the relevant authorities. All areas are estimates only and are subject to final survey.



TYPE B10

73 SQM / 786 SQFT
Block 08 #02-02 TO #04-02

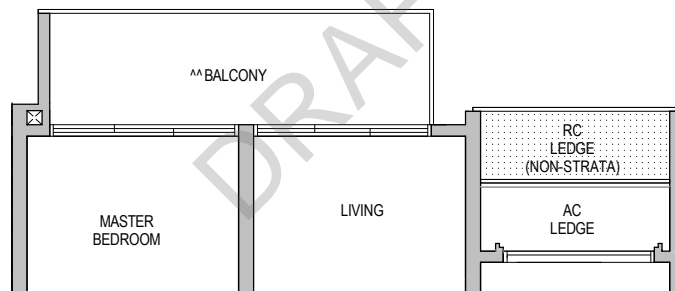


TYPE B10H

81 SQM / 872 SQFT

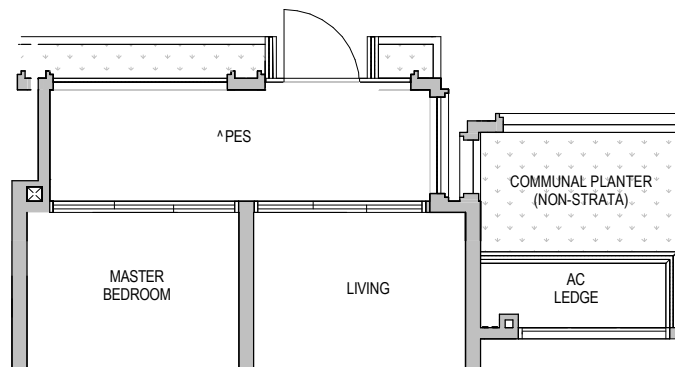
** AREA IS INCLUSIVE OF STRATA VOID AREA ABOVE LIVING AND DINING AS PER DOTTED LINE

Block 08 #05-02



TYPE B10 (PES)

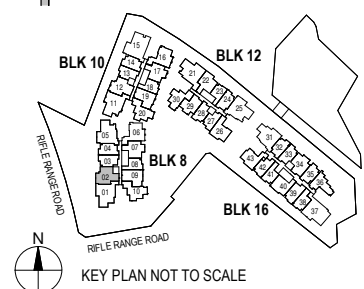
73 SQM / 786 SQFT
Block 08 #01-02



^ The PES shall not be enclosed.

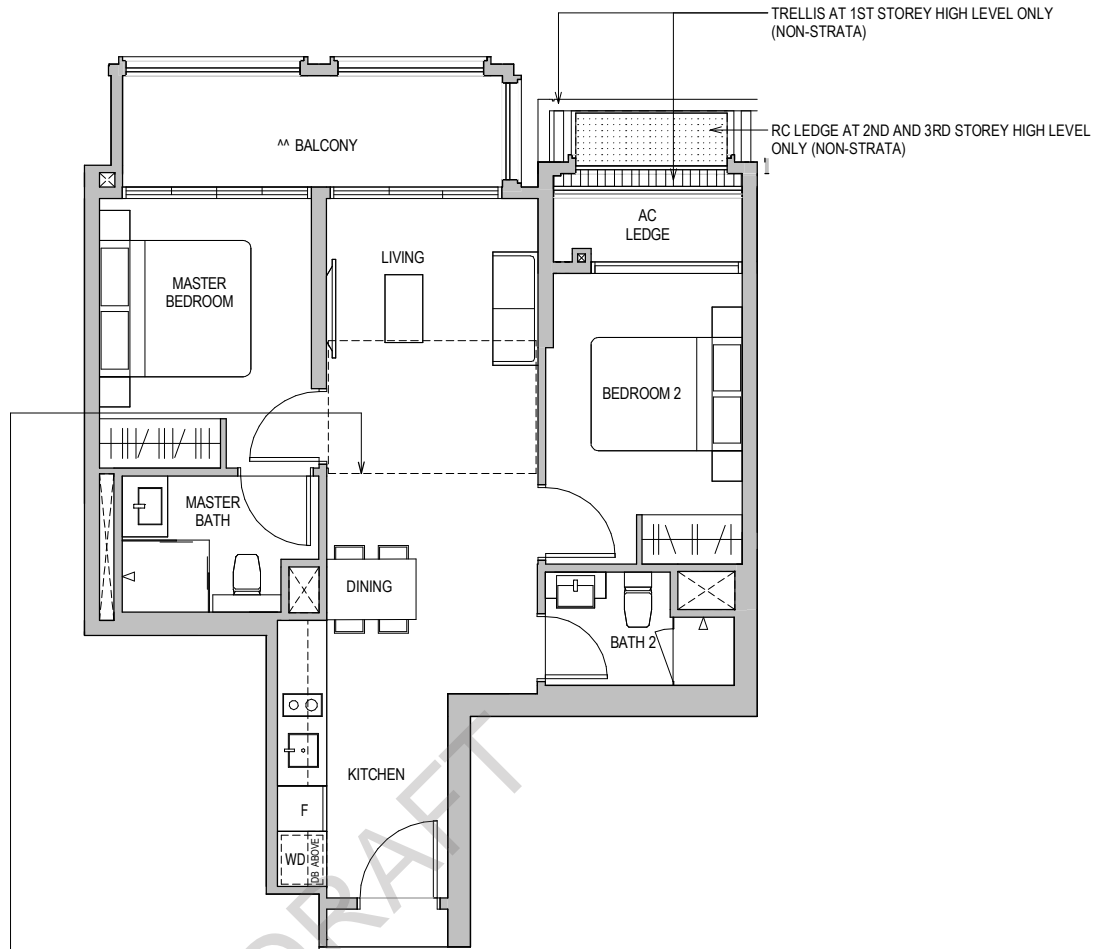
^^ The balcony shall not be enclosed. Only approved balcony screens are to be used. For an illustration of the approved balcony screen, please refer to the diagram annexed hereto as "Annexure 1".

Areas include AC Ledge, Balcony, PES, and Strata Void Area (where applicable). Orientations and facings will differ depending on the unit you are purchasing, please refer to the key plan. Plans are not drawn to scale and subject to change as may be required or approved by the relevant authorities. All areas are estimates only and are subject to final survey.



TYPE B10a

73 SQM / 786 SQFT
Block 12 #02-22 TO #04-22

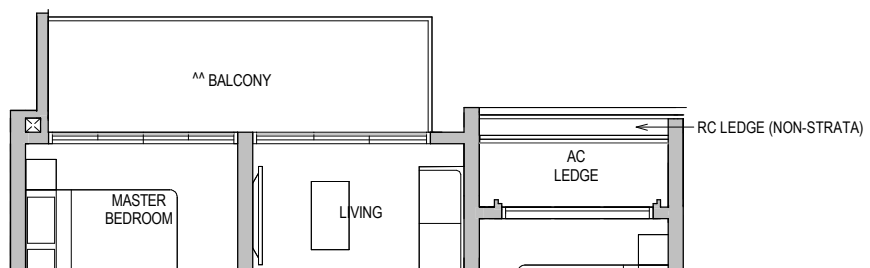


TYPE B10aH

79 SQM / 850 SQFT

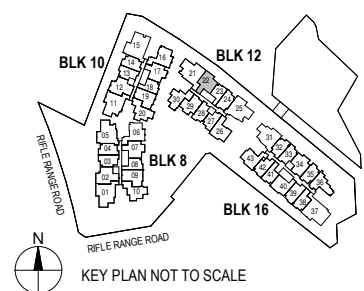
** AREA IS INCLUSIVE OF STRATA VOID AREA ABOVE LIVING AND DINING AS PER DOTTED LINE

Block 12 #05-22



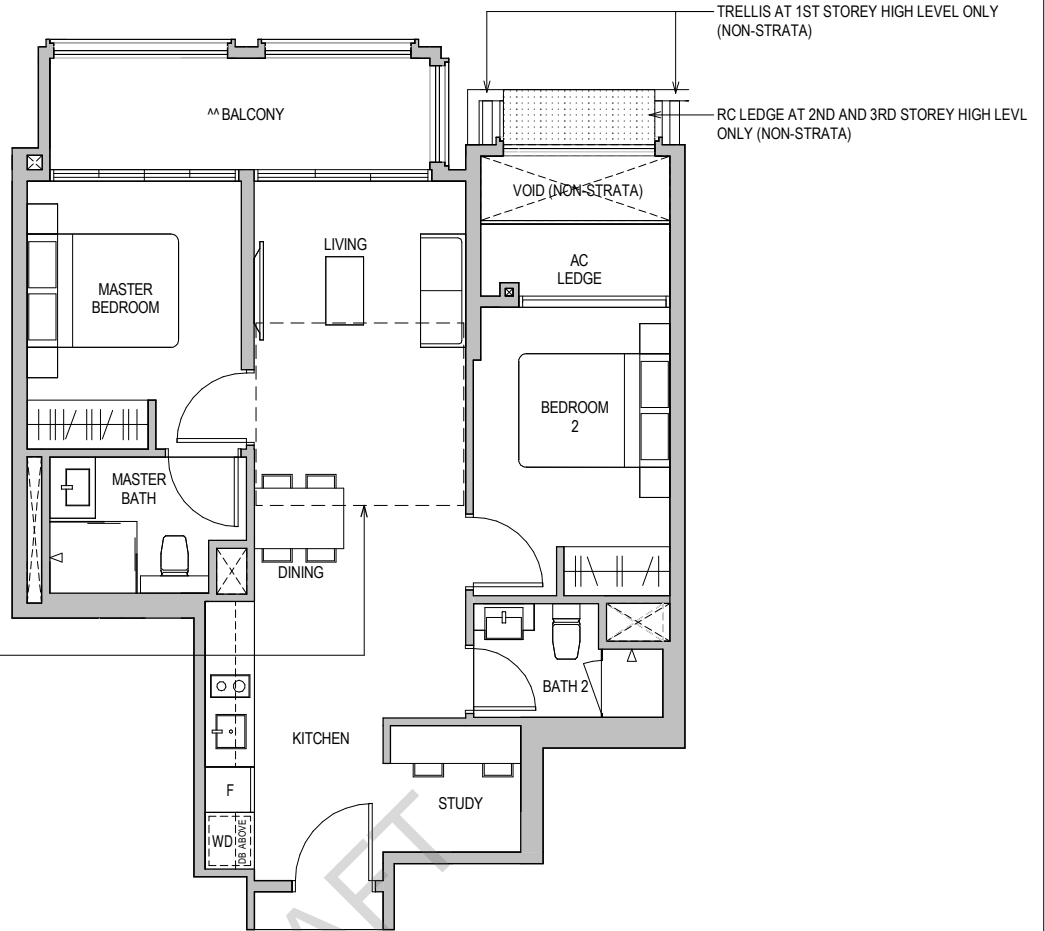
- ^ The PES shall not be enclosed.
- ^^ The balcony shall not be enclosed. Only approved balcony screens are to be used. For an illustration of the approved balcony screen, please refer to the diagram annexed hereto as "Annexure 1".

Areas include AC Ledge, Balcony, PES, and Strata Void Area (where applicable). Orientations and facings will differ depending on the unit you are purchasing, please refer to the key plan. Plans are not drawn to scale and subject to change as may be required or approved by the relevant authorities. All areas are estimates only and are subject to final survey.



TYPE BS1

77 SQM / 829 SQFT
Block 10 #02-12 TO #04-12

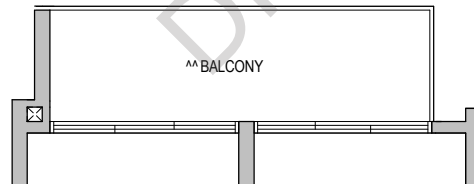


TYPE BS1H

85 SQM / 915 SQFT

** AREA IS INCLUSIVE OF STRATA VOID AREA ABOVE LIVING AND DINING AS PER DOTTED LINE

Block 10 #05-12

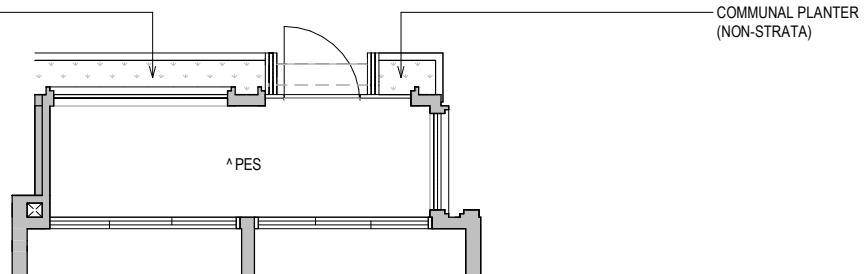


COMMUNAL PLANTER (NON-STRATA)

TYPE BS1 (PES)

77 SQM / 829 SQFT

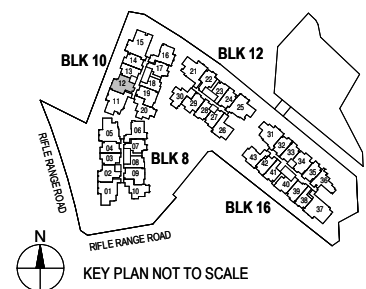
Block 10 #01-12



^ The PES shall not be enclosed.

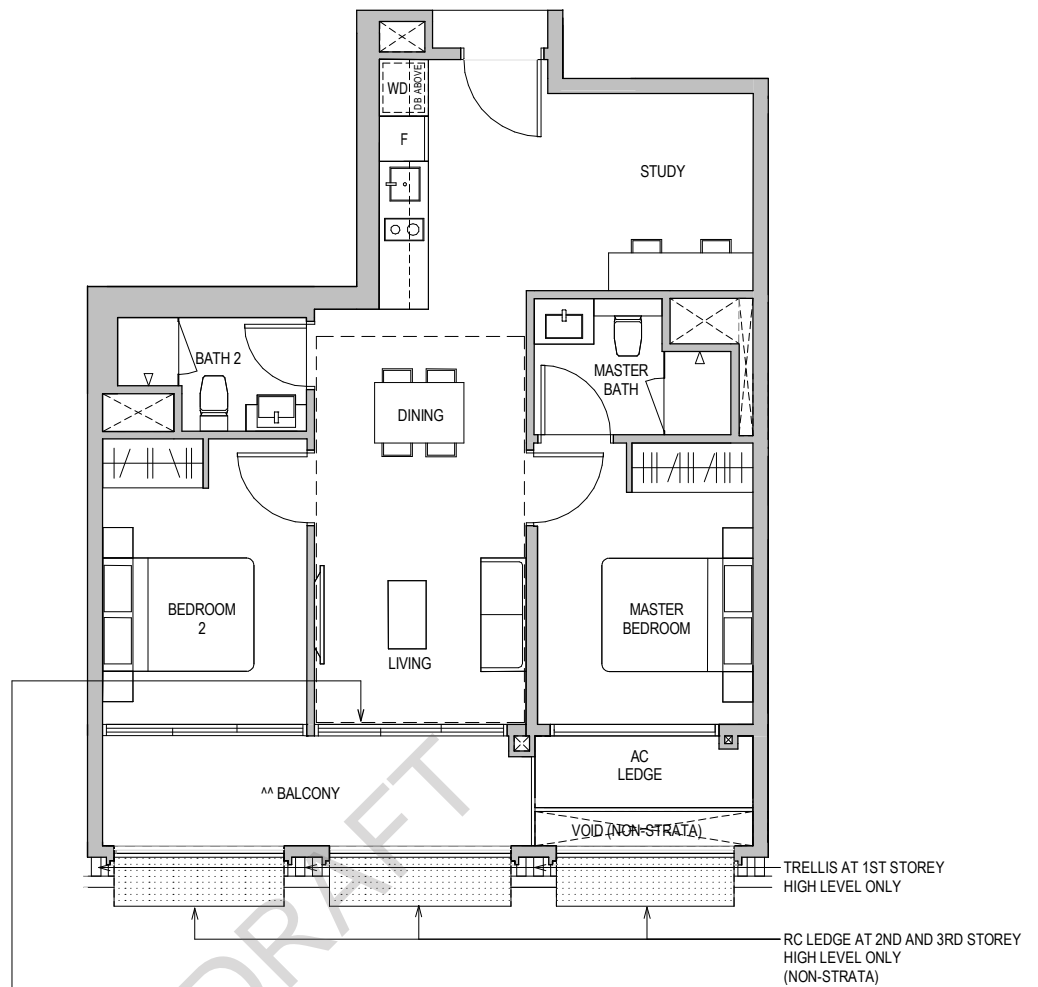
^^ The balcony shall not be enclosed. Only approved balcony screens are to be used. For an illustration of the approved balcony screen, please refer to the diagram annexed hereto as "Annexure 1".

Areas include AC Ledge, Balcony, PES, and Strata Void Area (where applicable). Orientations and facings will differ depending on the unit you are purchasing, please refer to the key plan. Plans are not drawn to scale and subject to change as may be required or approved by the relevant authorities. All areas are estimates only and are subject to final survey.



TYPE BS2

79 SQM / 850 SQFT
Block 16 #02-40 TO #04-40

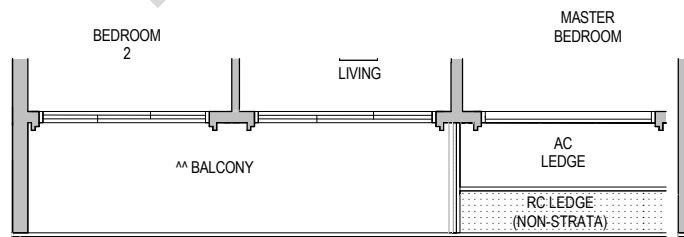


TYPE BS2H

95 SQM / 1023 SQFT

** AREA IS INCLUSIVE OF STRATA VOID AREA ABOVE LIVING & DINING AS PER DOTTED LINE

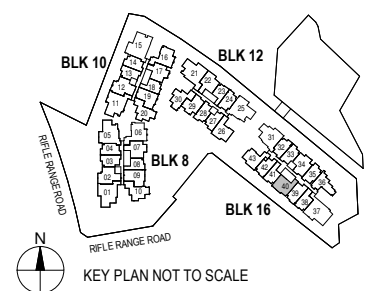
Block 16 #05-40



^ The PES shall not be enclosed.

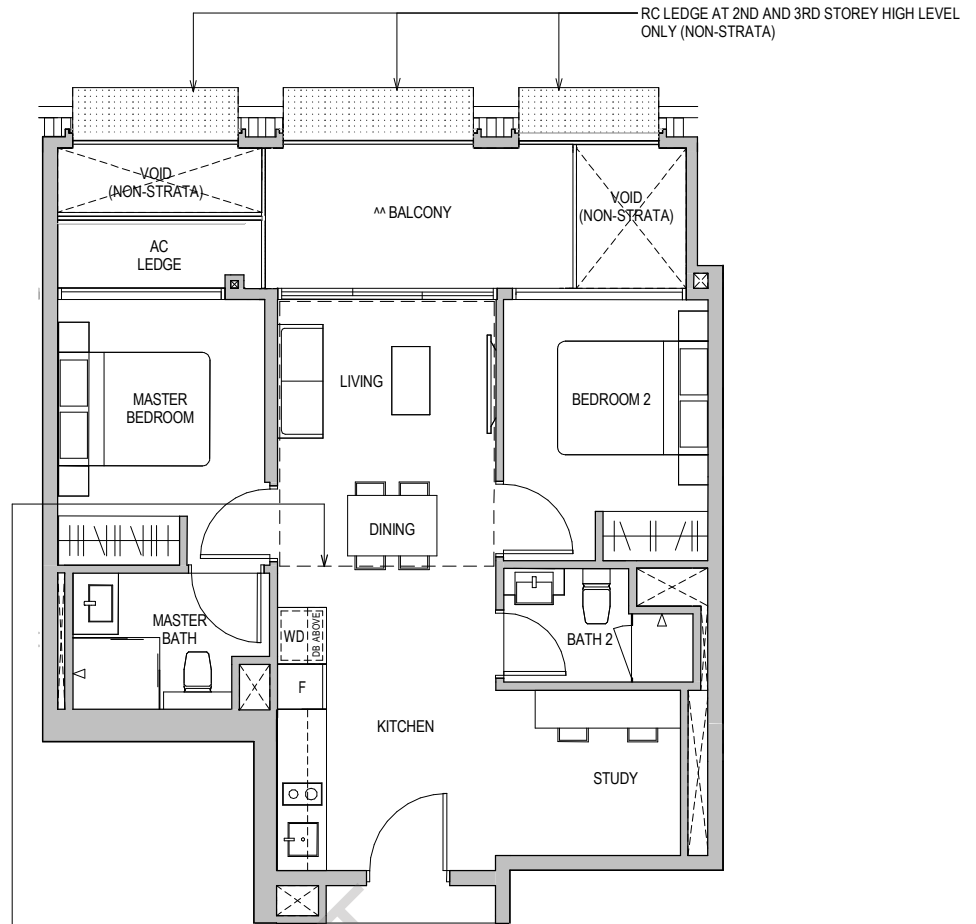
^^ The balcony shall not be enclosed. Only approved balcony screens are to be used. For an illustration of the approved balcony screen, please refer to the diagram annexed hereto as "Annexure 1".

Areas include AC Ledge, Balcony, PES, and Strata Void Area (where applicable). Orientations and facings will differ depending on the unit you are purchasing, please refer to the key plan. Plans are not drawn to scale and subject to change as may be required or approved by the relevant authorities. All areas are estimates only and are subject to final survey.



TYPE BS3

74 SQM / 797 SQFT
Block 16 #02-34 TO #04-34

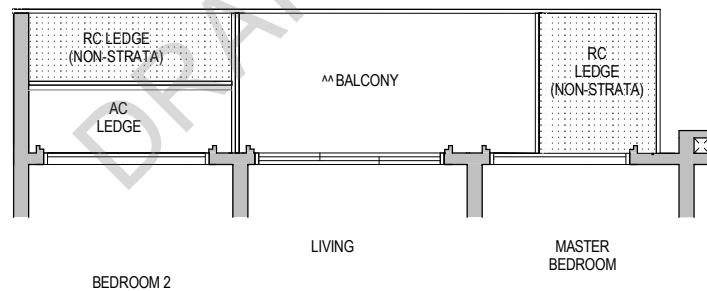


TYPE BS3H

85 SQM / 915 SQFT

** AREA IS INCLUSIVE OF STRATA VOID AREA ABOVE LIVING AND DINING AS PER DOTTED LINE

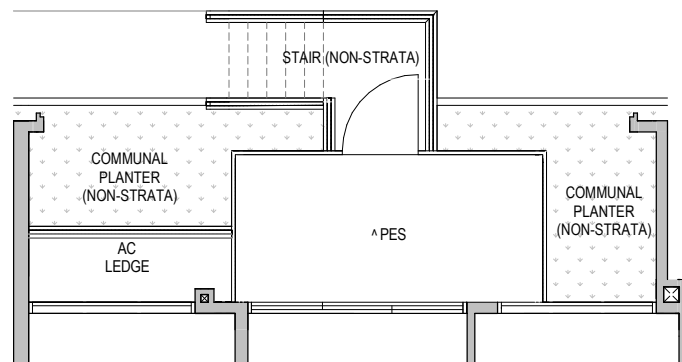
Block 16 #05-34



TYPE BS3 (PES)

74 SQM / 797 SQFT

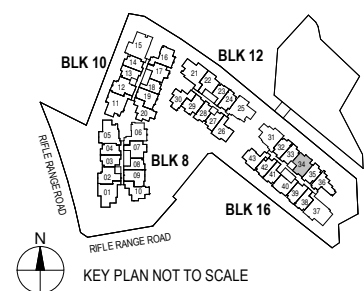
Block 16 #01-34



^ The PES shall not be enclosed.

^^ The balcony shall not be enclosed. Only approved balcony screens are to be used. For an illustration of the approved balcony screen, please refer to the diagram annexed hereto as "Annexure 1".

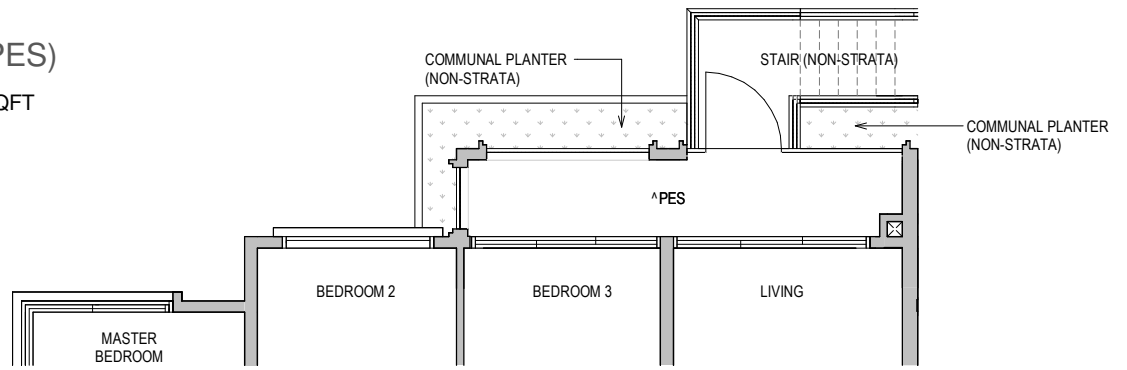
Areas include AC Ledge, Balcony, PES, and Strata Void Area (where applicable). Orientations and facings will differ depending on the unit you are purchasing, please refer to the key plan. Plans are not drawn to scale and subject to change as may be required or approved by the relevant authorities. All areas are estimates only and are subject to final survey.



TYPE C1 (PES)

94 SQM / 1012 SQFT

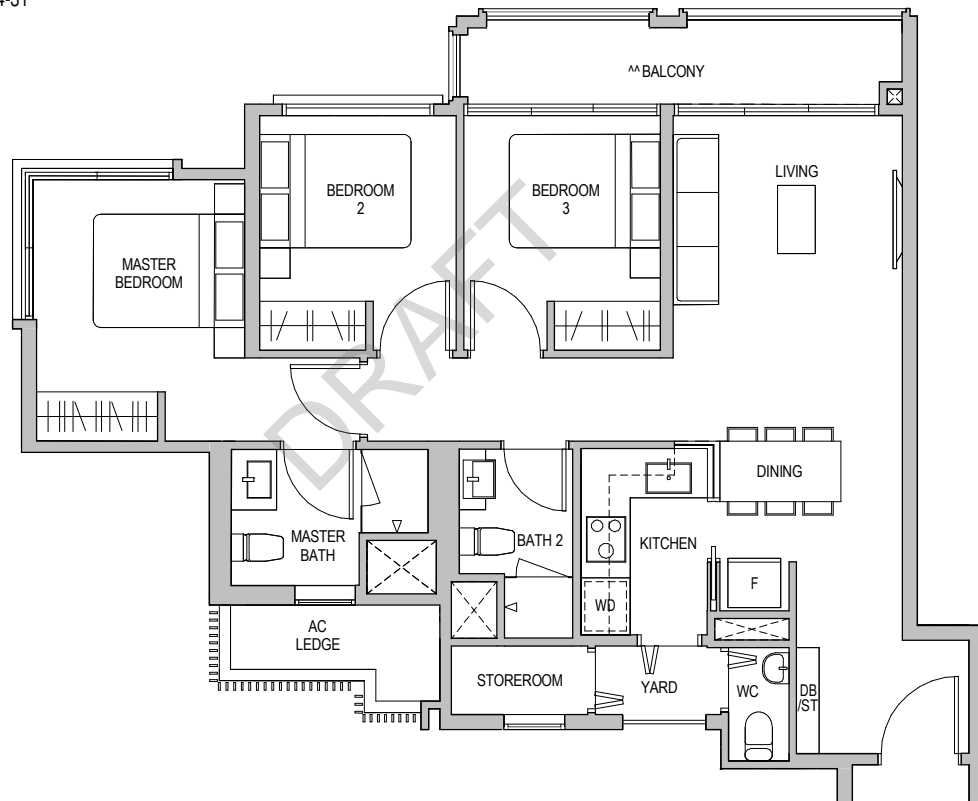
Block 16 #01-31



TYPE C1

94 SQM / 1012 SQFT

Block 16 #02-31 TO #04-31

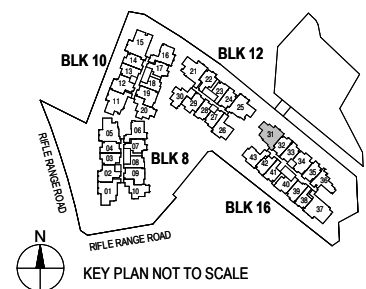


ST Storage Cabinet

^ The PES shall not be enclosed.

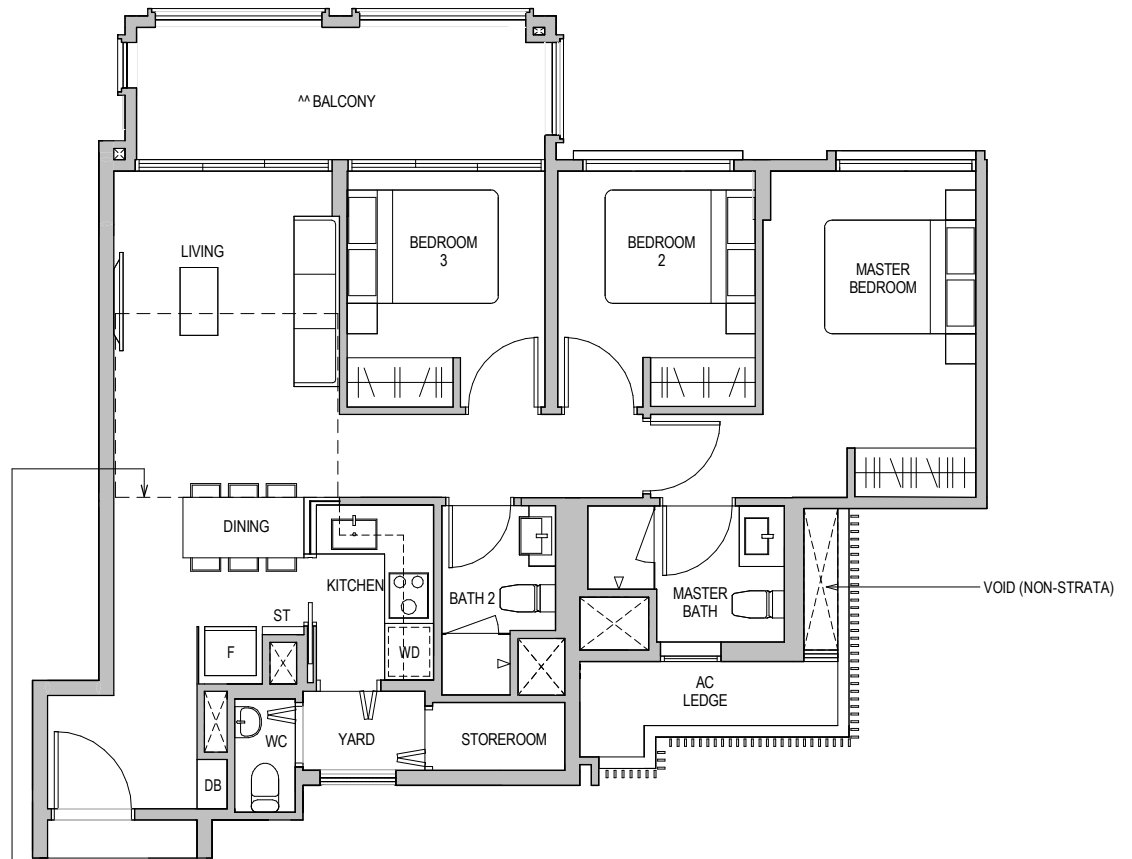
^^ The balcony shall not be enclosed. Only approved balcony screens are to be used. For an illustration of the approved balcony screen, please refer to the diagram annexed hereto as "Annexure 1".

Areas include AC Ledge, Balcony, PES, and Strata Void Area (where applicable). Orientations and facings will differ depending on the unit you are purchasing, please refer to the key plan. Plans are not drawn to scale and subject to change as may be required or approved by the relevant authorities. All areas are estimates only and are subject to final survey.



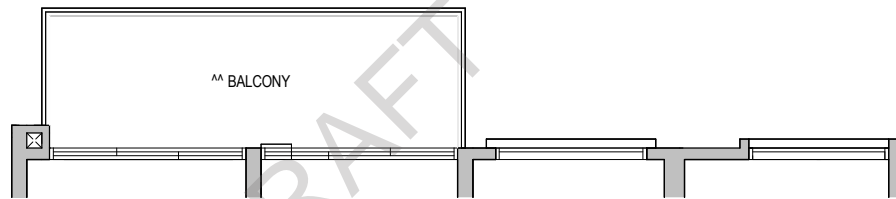
TYPE C2

99 SQM / 1066 SQFT
 Block 08 #02-05 TO #04-05
 Block 12 #02-25 TO #04-25



TYPE C2H

107 SQM / 1152 SQFT
 ** AREA IS INCLUSIVE OF STRATA VOID AREA ABOVE LIVING AND DINING AS PER DOTTED LINE
 Block 08 #05-05

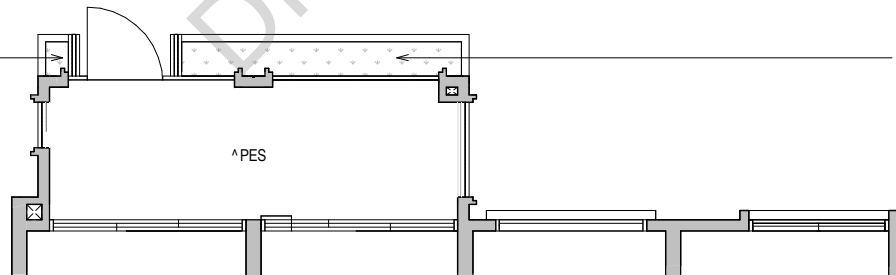


COMMUNAL PLANTER (NON-STRATA)

COMMUNAL PLANTER (NON-STRATA)

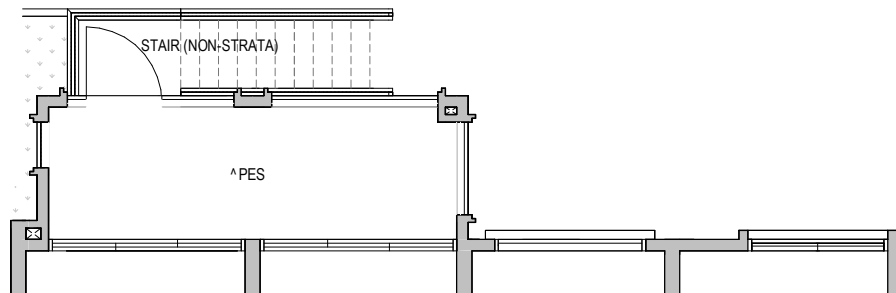
TYPE C2 (PES)

99 SQM / 1066 SQFT
 Block 08 #01-05



TYPE C2 (PES)

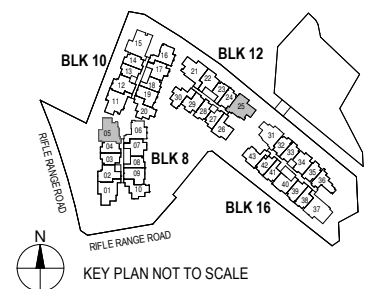
99 SQM / 1066 SQFT
 Block 12 #01-25



ST Storage Cabinet

^ The PES shall not be enclosed.
 ^^ The balcony shall not be enclosed. Only approved balcony screens are to be used. For an illustration of the approved balcony screen, please refer to the diagram annexed hereto as "Annexure 1".

Areas include AC Ledge, Balcony, PES, and Strata Void Area (where applicable). Orientations and facings will differ depending on the unit you are purchasing, please refer to the key plan. Plans are not drawn to scale and subject to change as may be required or approved by the relevant authorities. All areas are estimates only and are subject to final survey.

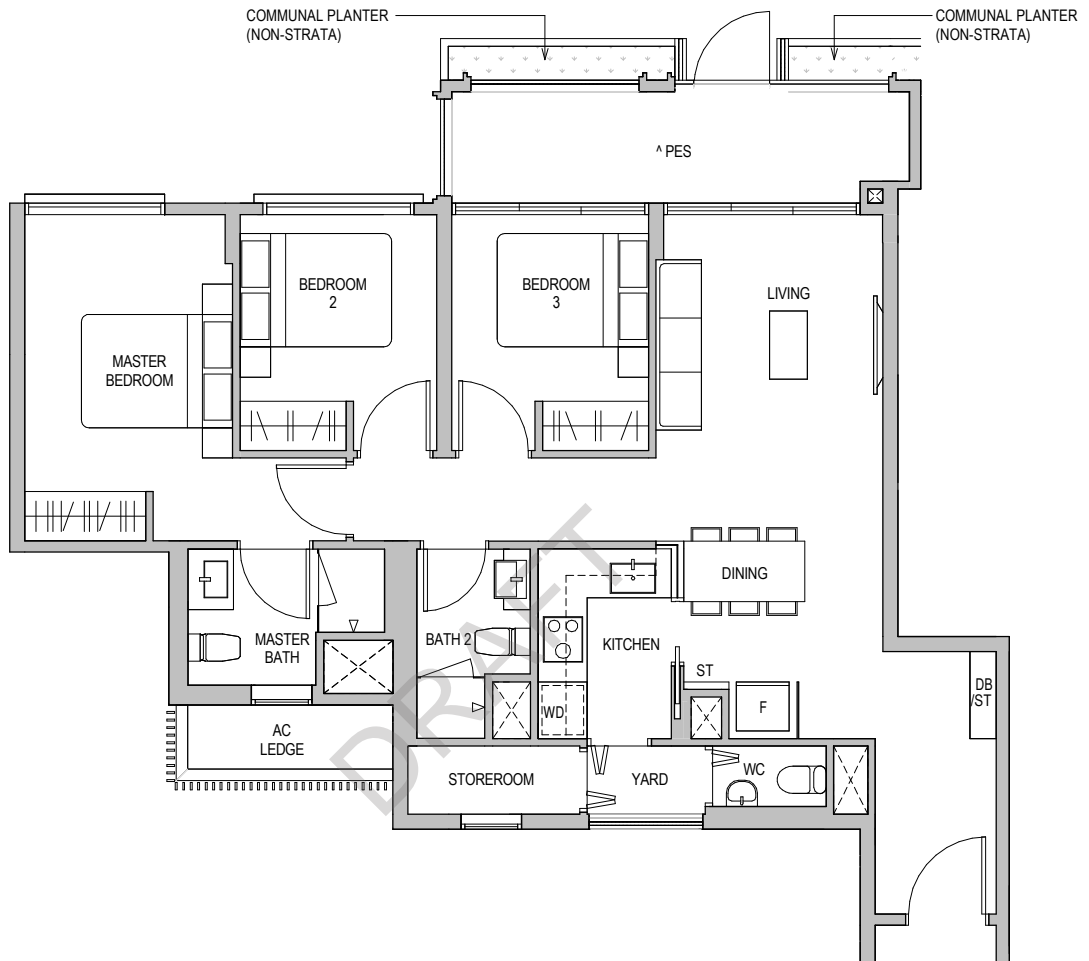


KEY PLAN NOT TO SCALE

TYPE C3a (PES)

103 SQM / 1109 SQFT

Block 08 #01-01

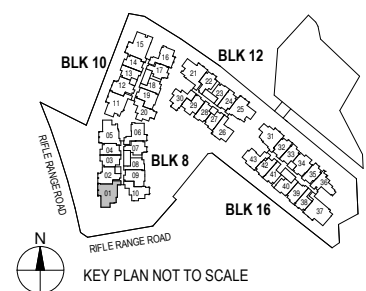


ST Storage Cabinet

^ The PES shall not be enclosed.

^^ The balcony shall not be enclosed. Only approved balcony screens are to be used. For an illustration of the approved balcony screen, please refer to the diagram annexed hereto as "Annexure 1".

Areas include AC Ledge, Balcony, PES, and Strata Void Area (where applicable). Orientations and facings will differ depending on the unit you are purchasing, please refer to the key plan. Plans are not drawn to scale and subject to change as may be required or approved by the relevant authorities. All areas are estimates only and are subject to final survey.

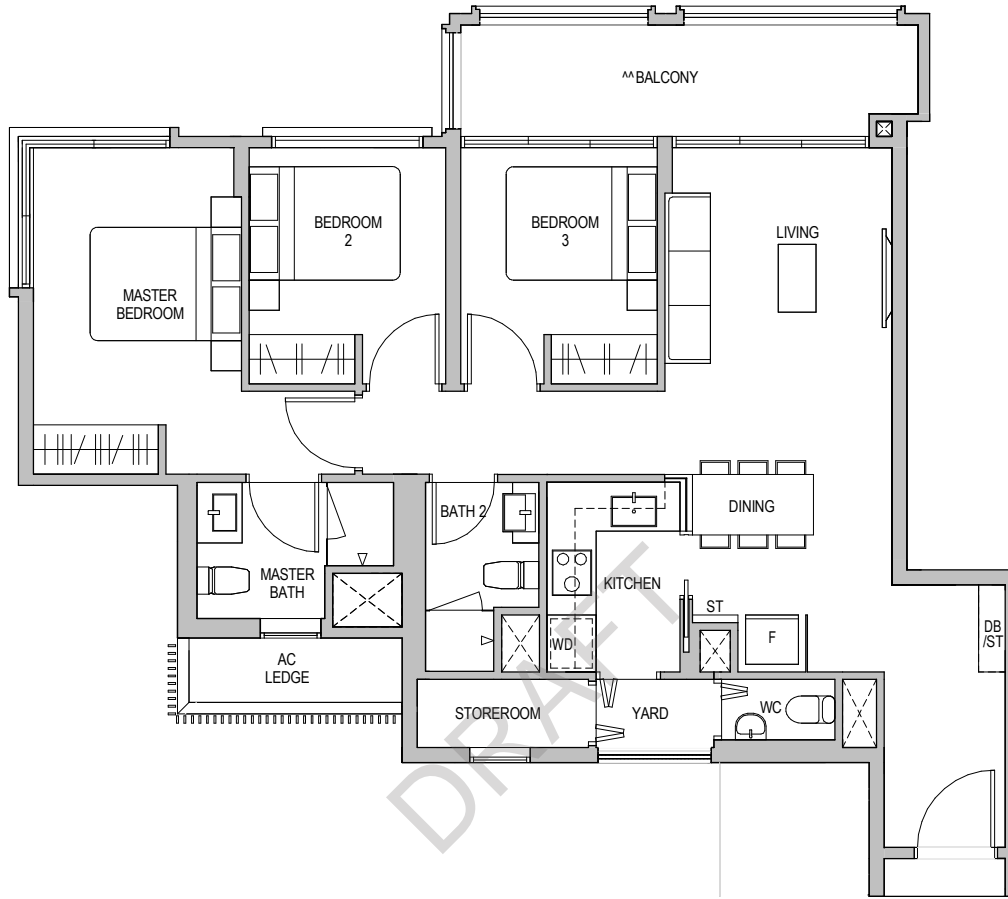


KEY PLAN NOT TO SCALE

TYPE C3a

103 SQM / 1109 SQFT

Block 08 #02-01 TO #04-01

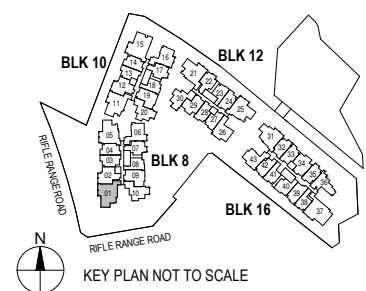


ST Storage Cabinet

^ The PES shall not be enclosed.

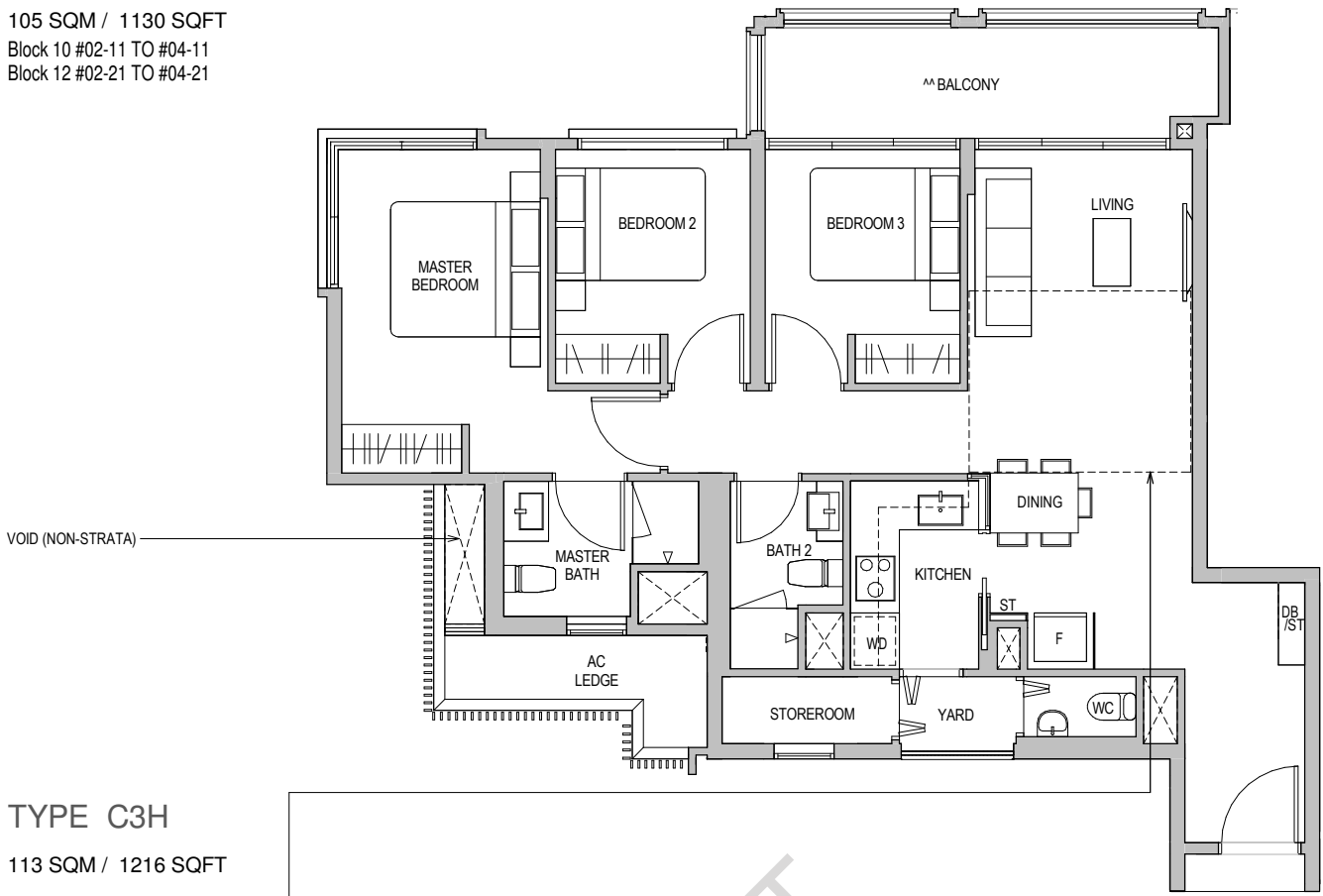
^^ The balcony shall not be enclosed. Only approved balcony screens are to be used. For an illustration of the approved balcony screen, please refer to the diagram annexed hereto as "Annexure 1".

Areas include AC Ledge, Balcony, PES, and Strata Void Area (where applicable). Orientations and facings will differ depending on the unit you are purchasing, please refer to the key plan. Plans are not drawn to scale and subject to change as may be required or approved by the relevant authorities. All areas are estimates only and are subject to final survey.



TYPE C3

105 SQM / 1130 SQFT
 Block 10 #02-11 TO #04-11
 Block 12 #02-21 TO #04-21

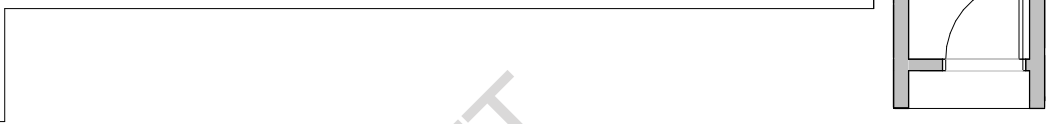


TYPE C3H

113 SQM / 1216 SQFT

** AREA IS INCLUSIVE OF STRATA VOID AREA ABOVE LIVING AND DINING AS PER DOTTED LINE

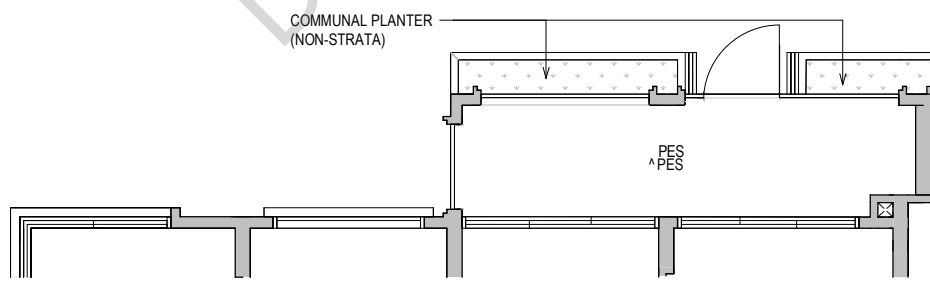
Block 10 #05-11



TYPE C3 (PES)

105 SQM / 1130 SQFT

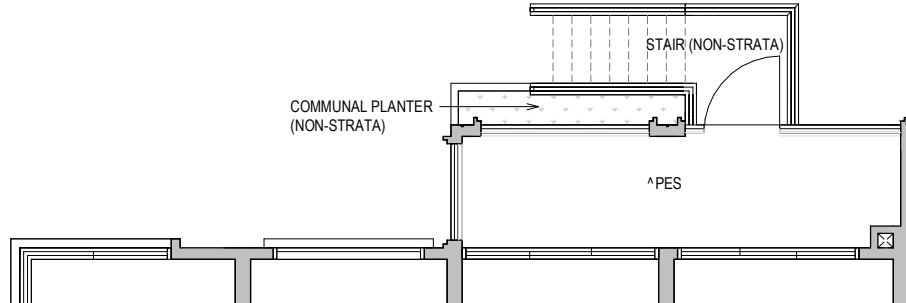
Block 10 #01-11



TYPE C3b (PES)

105 SQM / 1130 SQFT

Block 12 #01-21

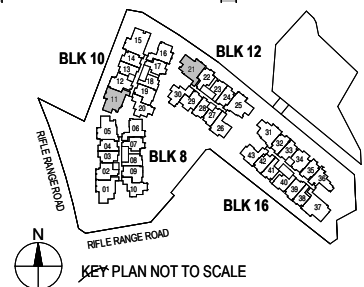


ST Storage Cabinet

^ The PES shall not be enclosed.

^^ The balcony shall not be enclosed. Only approved balcony screens are to be used. For an illustration of the approved balcony screen, please refer to the diagram annexed hereto as "Annexure 1".

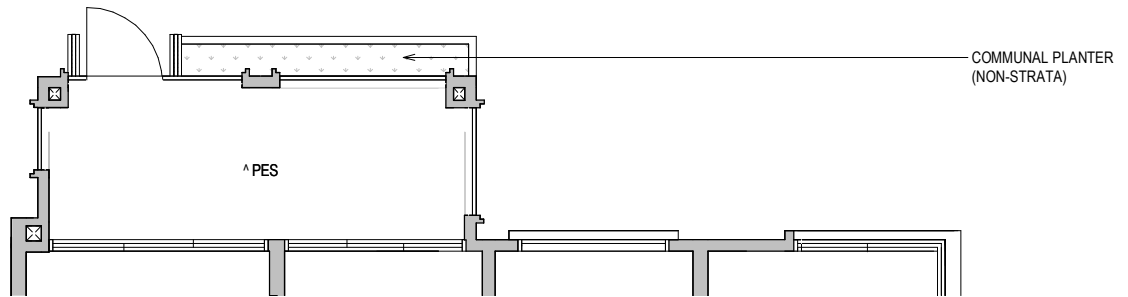
Areas include AC Ledge, Balcony, PES, and Strata Void Area (where applicable). Orientations and facings will differ depending on the unit you are purchasing, please refer to the key plan. Plans are not drawn to scale and subject to change as may be required or approved by the relevant authorities. All areas are estimates only and are subject to final survey.



TYPE D1 (PES)

116 SQM / 1249 SQFT

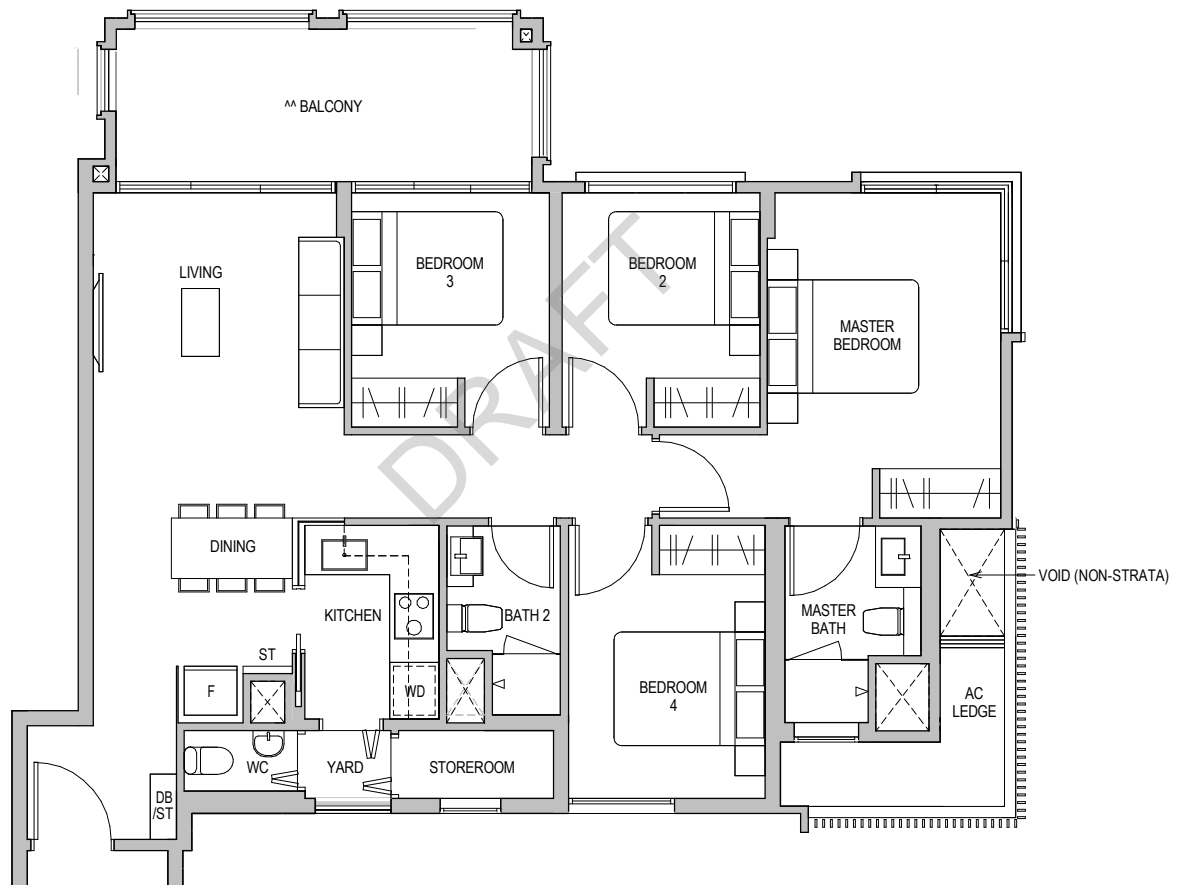
Block 10 #01-15



TYPE D1

116 SQM / 1249 SQFT

Block 10 #02-15 TO #04-15

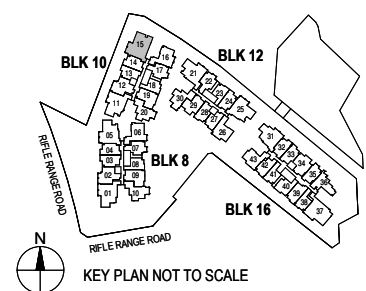


ST Storage Cabinet

^ The PES shall not be enclosed.

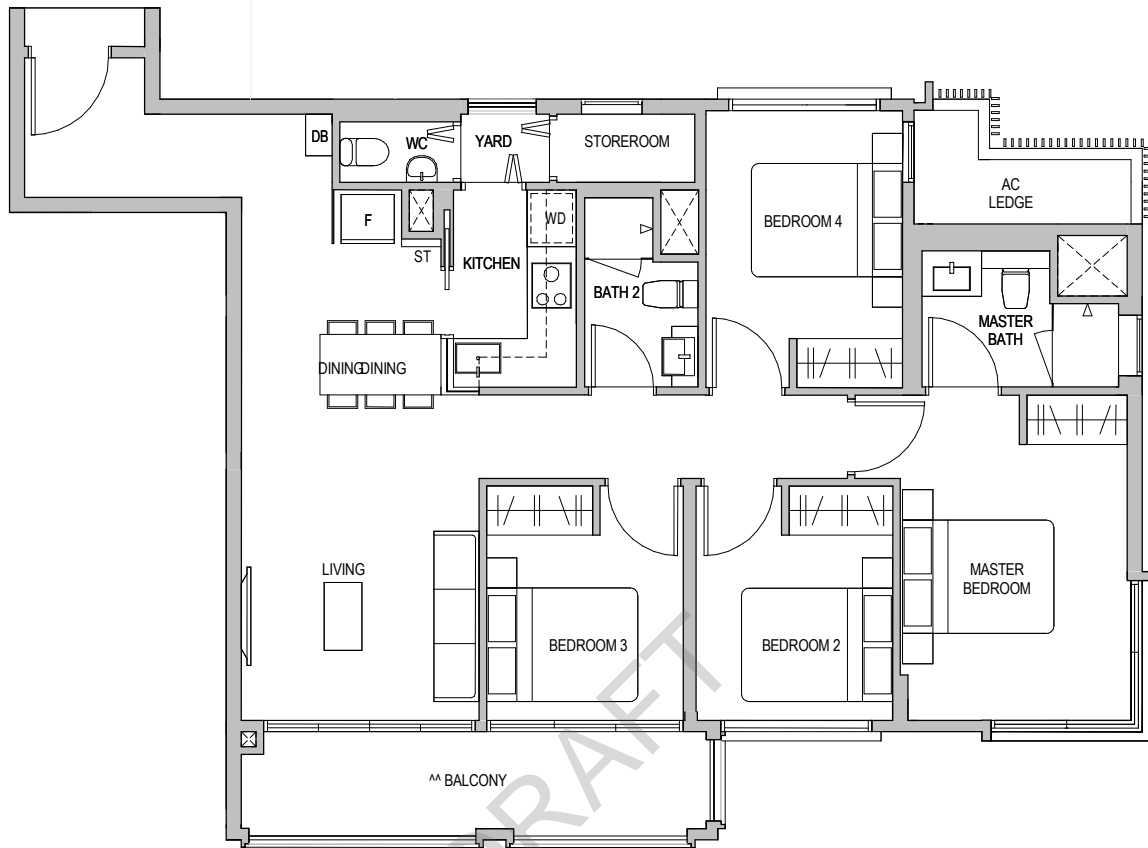
^^ The balcony shall not be enclosed. Only approved balcony screens are to be used. For an illustration of the approved balcony screen, please refer to the diagram annexed hereto as "Annexure 1".

Areas include AC Ledge, Balcony, PES, and Strata Void Area (where applicable). Orientations and facings will differ depending on the unit you are purchasing, please refer to the key plan. Plans are not drawn to scale and subject to change as may be required or approved by the relevant authorities. All areas are estimates only and are subject to final survey.



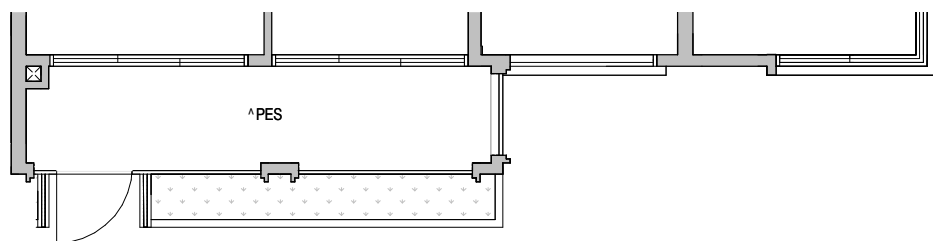
TYPE D2

113 SQM / 1216 SQFT
Block 16 #02-37 TO #04-37



TYPE D2 (PES)

113 SQM / 1216 SQFT
Block 16 #01-37

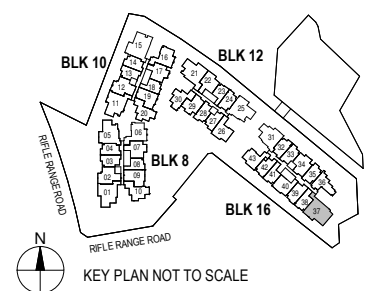


ST Storage Cabinet

^ The PES shall not be enclosed.

^^ The balcony shall not be enclosed. Only approved balcony screens are to be used. For an illustration of the approved balcony screen, please refer to the diagram annexed hereto as "Annexure 1".

Areas include AC Ledge, Balcony, PES, and Strata Void Area (where applicable). Orientations and facings will differ depending on the unit you are purchasing, please refer to the key plan. Plans are not drawn to scale and subject to change as may be required or approved by the relevant authorities. All areas are estimates only and are subject to final survey.



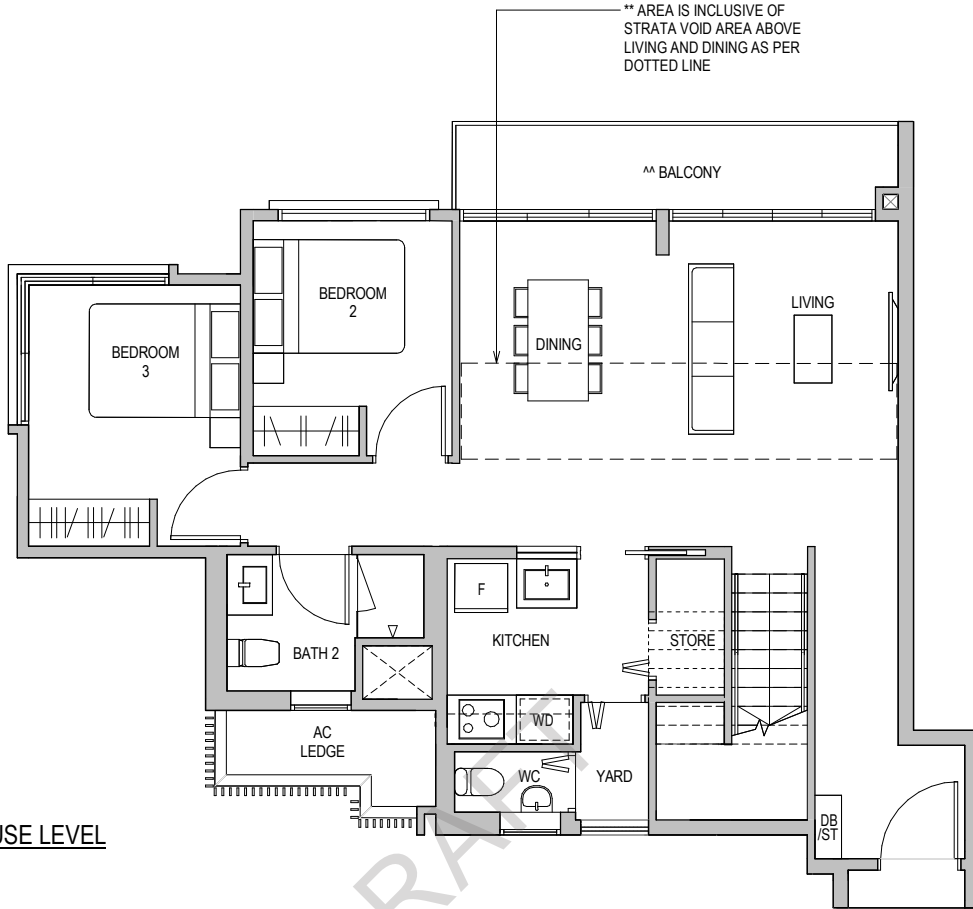
TYPE PHC1

143 SQM / 1539 SQFT

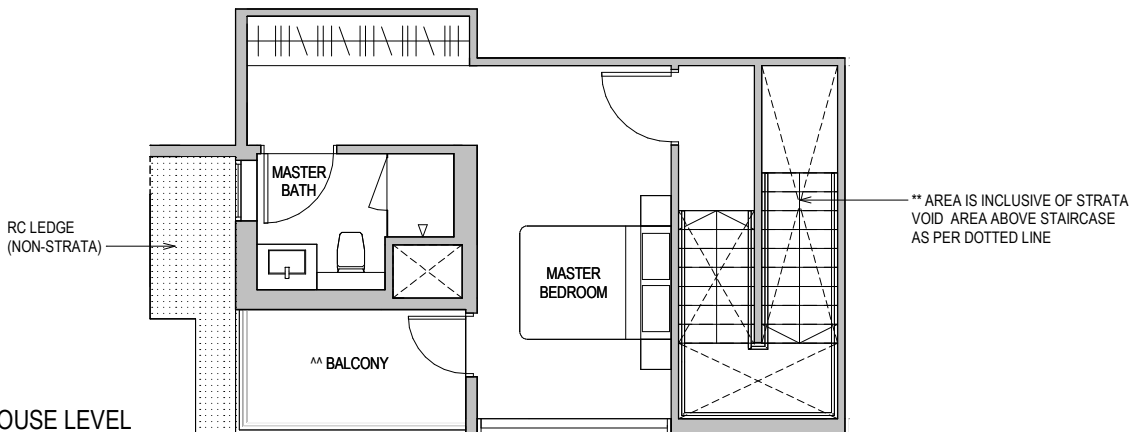
Block 16 #05-31

** AREA IS INCLUSIVE OF STRATA VOID AREA ABOVE LIVING, DINING AND STAIRS AS PER DOTTED LINE

** AREA IS INCLUSIVE OF STRATA VOID AREA ABOVE LIVING AND DINING AS PER DOTTED LINE



LOWER PENTHOUSE LEVEL



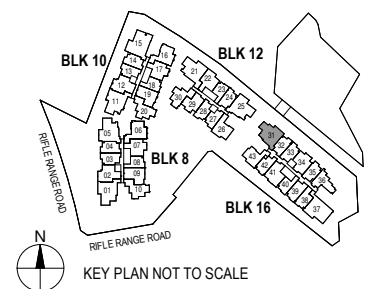
UPPER PENTHOUSE LEVEL

ST Storage Cabinet

^ The PES shall not be enclosed.

^^ The balcony shall not be enclosed. Only approved balcony screens are to be used. For an illustration of the approved balcony screen, please refer to the diagram annexed hereto as "Annexure 1".

Areas include AC Ledge, Balcony, PES, and Strata Void Area (where applicable). Orientations and facings will differ depending on the unit you are purchasing, please refer to the key plan. Plans are not drawn to scale and subject to change as may be required or approved by the relevant authorities. All areas are estimates only and are subject to final survey.

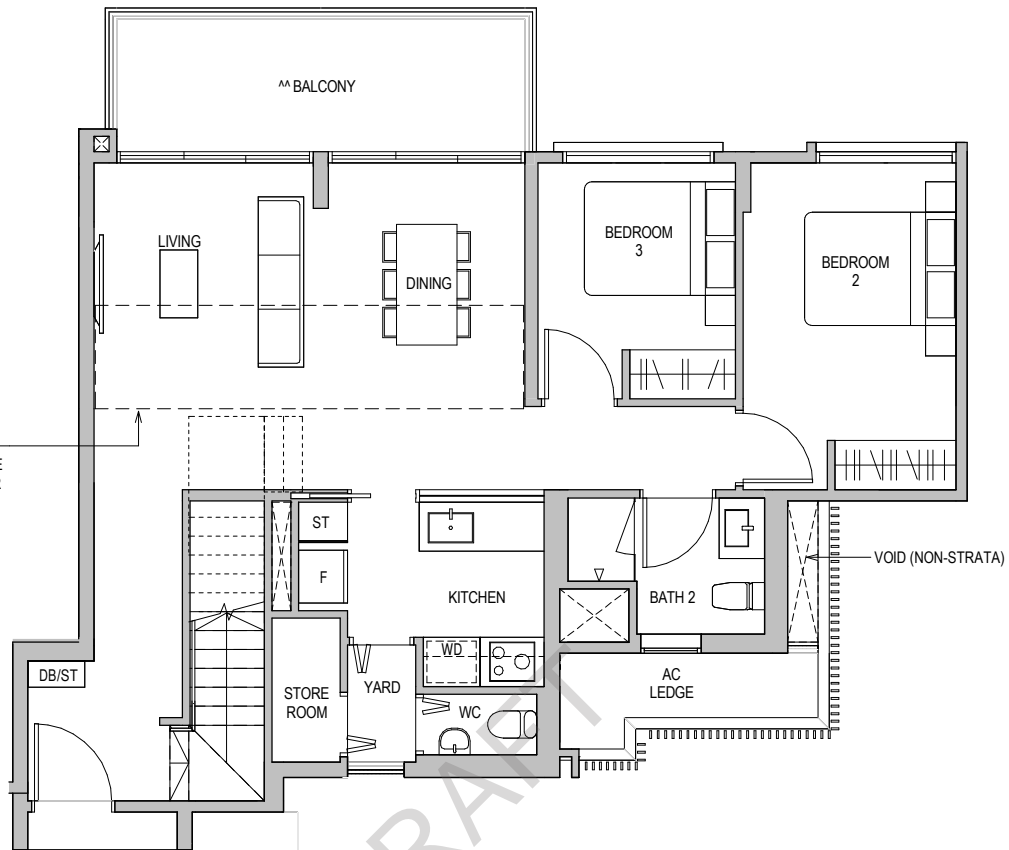


TYPE PHC2

149 SQM / 1604 SQFT

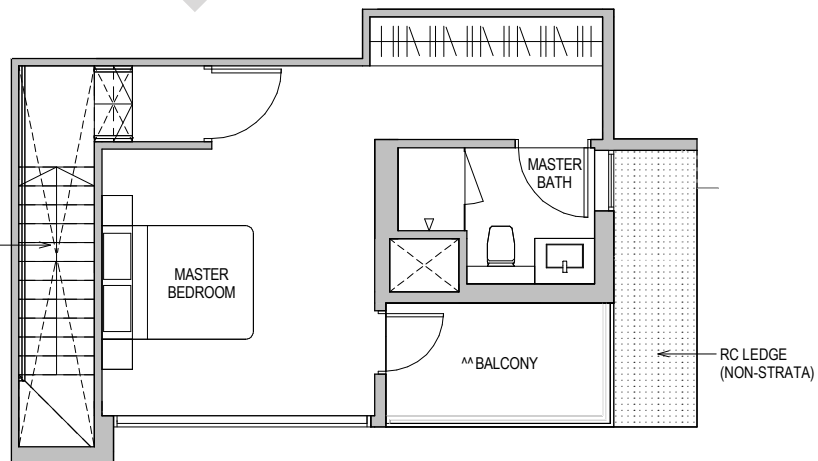
Block 12 #05-25

** AREA IS INCLUSIVE OF STRATA VOID AREA ABOVE LIVING, DINING AND STAIRS AS PER DOTTED LINE



LOWER PENTHOUSE LEVEL

** AREA IS INCLUSIVE OF STRATA VOID AREA ABOVE STAIRCASE AS PER DOTTED LINE



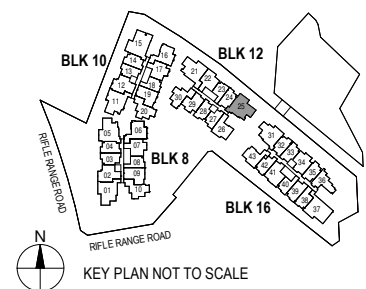
UPPER PENTHOUSE LEVEL

ST Storage Cabinet

^ The PES shall not be enclosed.

^^ The balcony shall not be enclosed. Only approved balcony screens are to be used. For an illustration of the approved balcony screen, please refer to the diagram annexed hereto as "Annexure 1".

Areas include AC Ledge, Balcony, PES, and Strata Void Area (where applicable). Orientations and facings will differ depending on the unit you are purchasing, please refer to the key plan. Plans are not drawn to scale and subject to change as may be required or approved by the relevant authorities. All areas are estimates only and are subject to final survey.



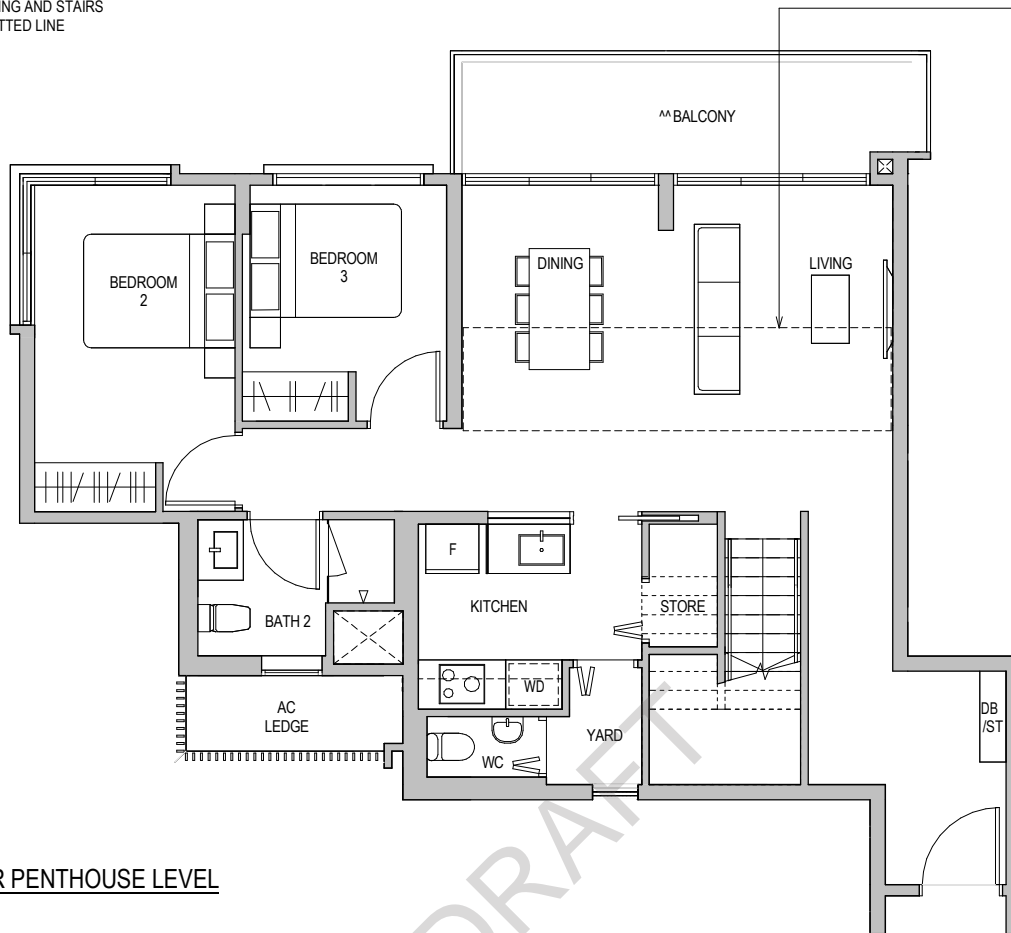
TYPE PHC3a

153 SQM / 1647 SQFT

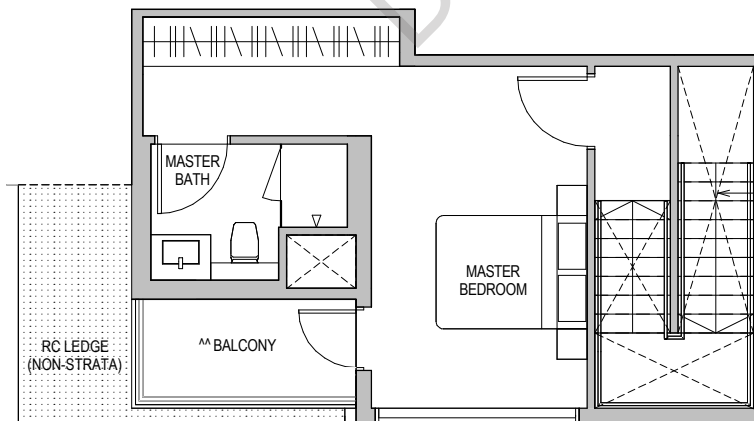
Block 08 #05-01

** AREA IS INCLUSIVE OF STRATA VOID AREA ABOVE LIVING, DINING AND STAIRS AS PER DOTTED LINE

** AREA IS INCLUSIVE OF STRATA VOID AREA ABOVE LIVING AND DINING AS PER DOTTED LINE



LOWER PENTHOUSE LEVEL



** AREA IS INCLUSIVE OF STRATA VOID AREA ABOVE STAIRCASE AS PER DOTTED LINE

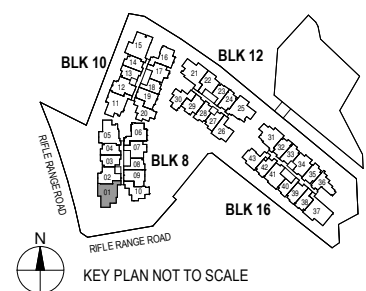
UPPER PENTHOUSE LEVEL

ST Storage Cabinet

^ The PES shall not be enclosed.

^^ The balcony shall not be enclosed. Only approved balcony screens are to be used. For an illustration of the approved balcony screen, please refer to the diagram annexed hereto as "Annexure 1".

Areas include AC Ledge, Balcony, PES, and Strata Void Area (where applicable). Orientations and facings will differ depending on the unit you are purchasing, please refer to the key plan. Plans are not drawn to scale and subject to change as may be required or approved by the relevant authorities. All areas are estimates only and are subject to final survey.



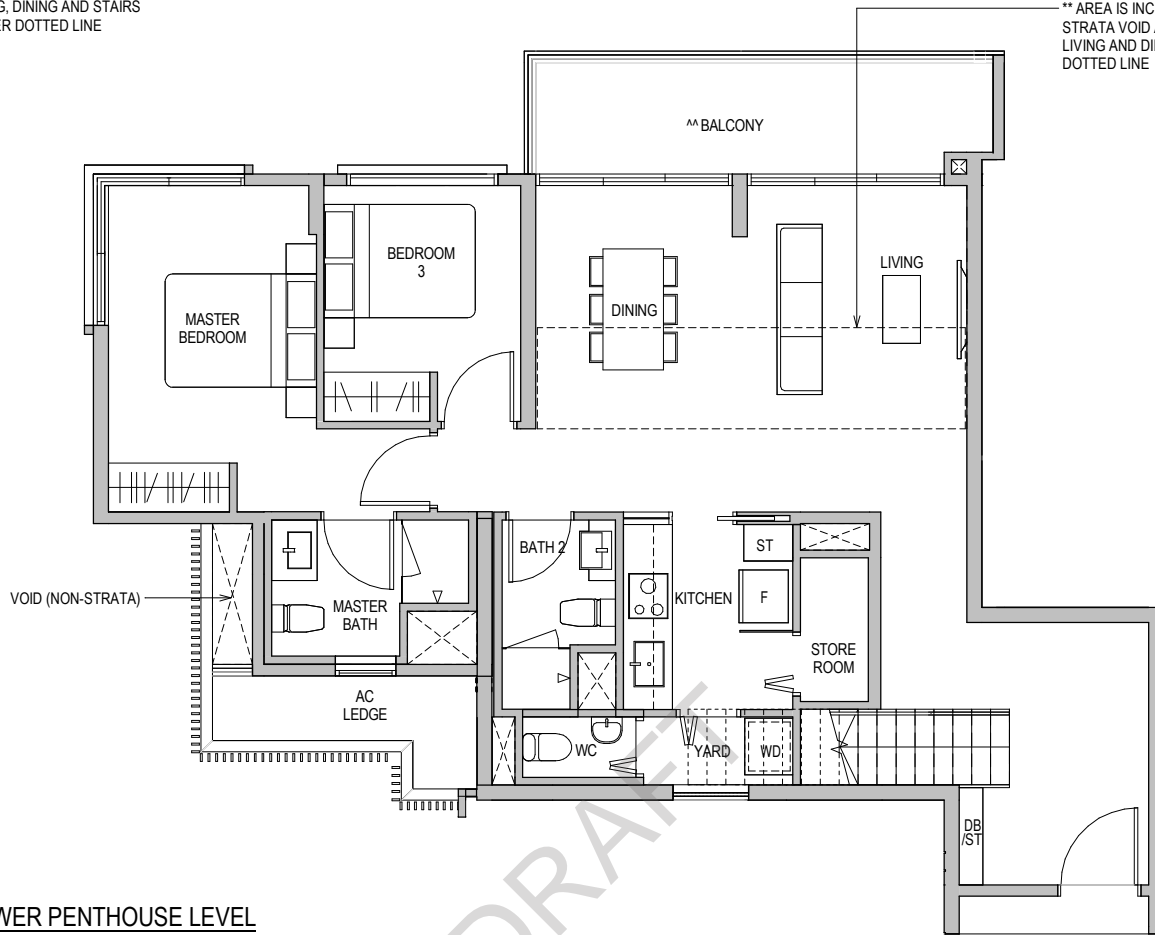
TYPE PHC3

146 SQM / 1572 SQFT

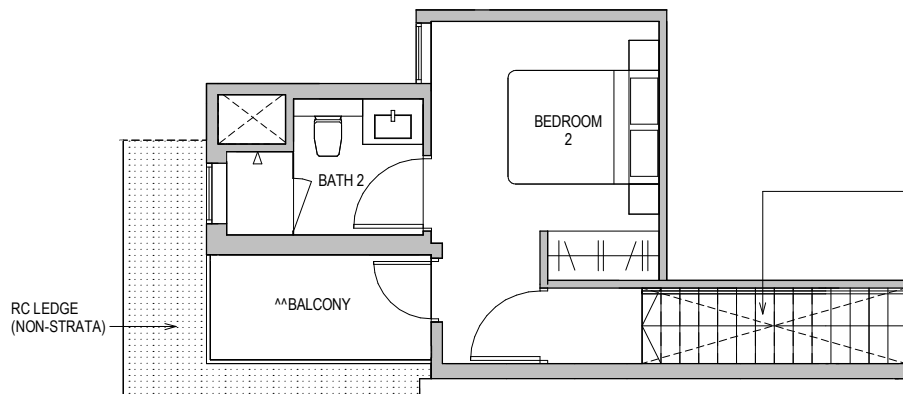
Block 12 #05-21

** AREA IS INCLUSIVE OF STRATA VOID AREA ABOVE LIVING, DINING AND STAIRS AS PER DOTTED LINE

** AREA IS INCLUSIVE OF STRATA VOID AREA ABOVE LIVING AND DINING AS PER DOTTED LINE



LOWER PENTHOUSE LEVEL



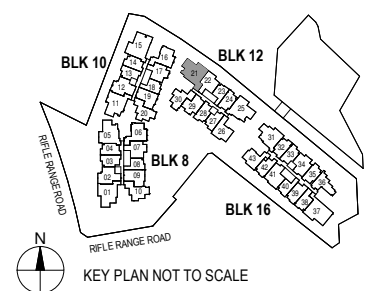
UPPER PENTHOUSE LEVEL

ST Storage Cabinet

^ The PES shall not be enclosed.

^^ The balcony shall not be enclosed. Only approved balcony screens are to be used. For an illustration of the approved balcony screen, please refer to the diagram annexed hereto as "Annexure 1".

Areas include AC Ledge, Balcony, PES, and Strata Void Area (where applicable). Orientations and facings will differ depending on the unit you are purchasing, please refer to the key plan. Plans are not drawn to scale and subject to change as may be required or approved by the relevant authorities. All areas are estimates only and are subject to final survey.

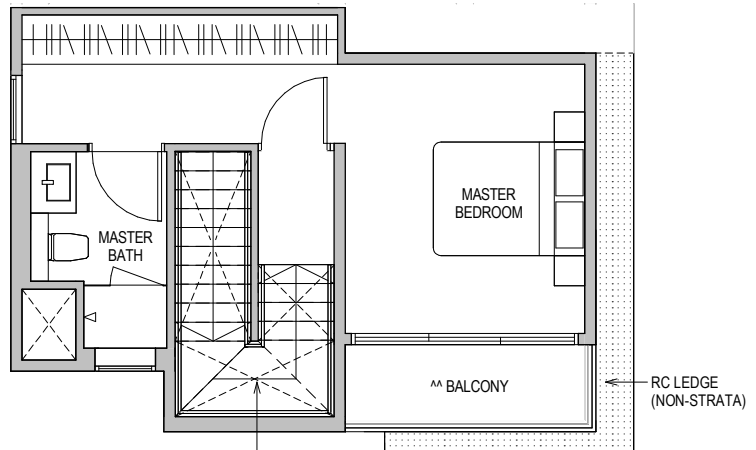


TYPE PHD1

161 SQM / 1733 SQFT

Block 10 #05-15

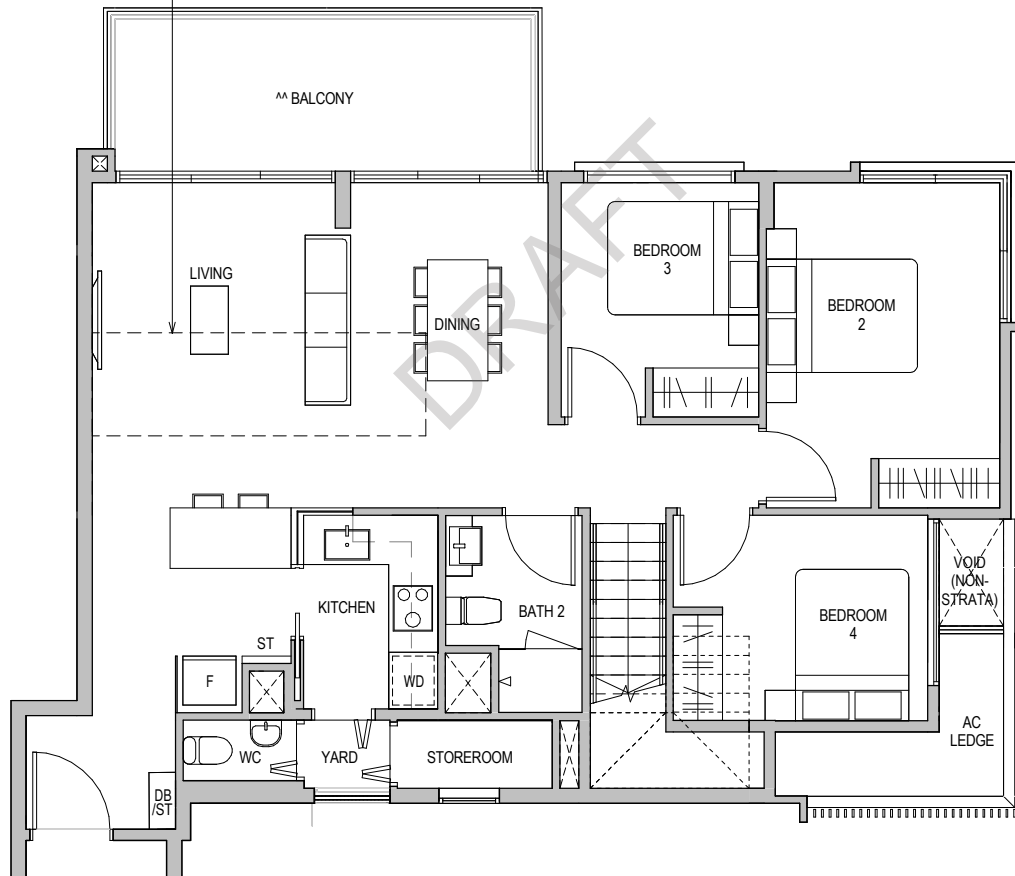
** AREA IS INCLUSIVE OF STRATA VOID AREA ABOVE LIVING, DINING AND STAIRS AS PER DOTTED LINE



UPPER PENTHOUSE LEVEL

** AREA IS INCLUSIVE OF STRATA VOID AREA ABOVE STAIRCASE AS PER DOTTED LINE

** AREA IS INCLUSIVE OF STRATA VOID AREA ABOVE LIVING AND DINING AS PER DOTTED LINE



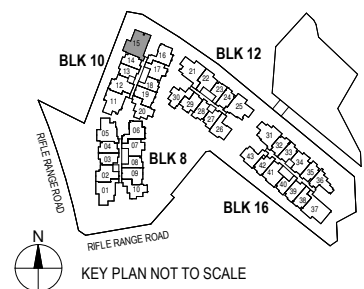
LOWER PENTHOUSE LEVEL

ST Storage Cabinet

^ The PES shall not be enclosed.

^^ The balcony shall not be enclosed. Only approved balcony screens are to be used. For an illustration of the approved balcony screen, please refer to the diagram annexed hereto as "Annexure 1".

Areas include AC Ledge, Balcony, PES, and Strata Void Area (where applicable). Orientations and facings will differ depending on the unit you are purchasing, please refer to the key plan. Plans are not drawn to scale and subject to change as may be required or approved by the relevant authorities. All areas are estimates only and are subject to final survey.



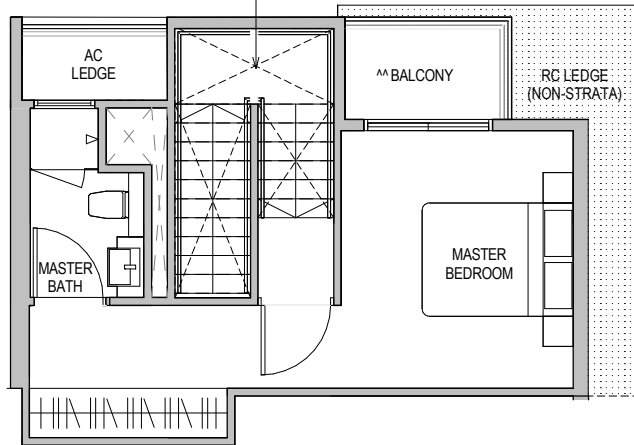
TYPE PHD2

161 SQM / 1733 SQFT

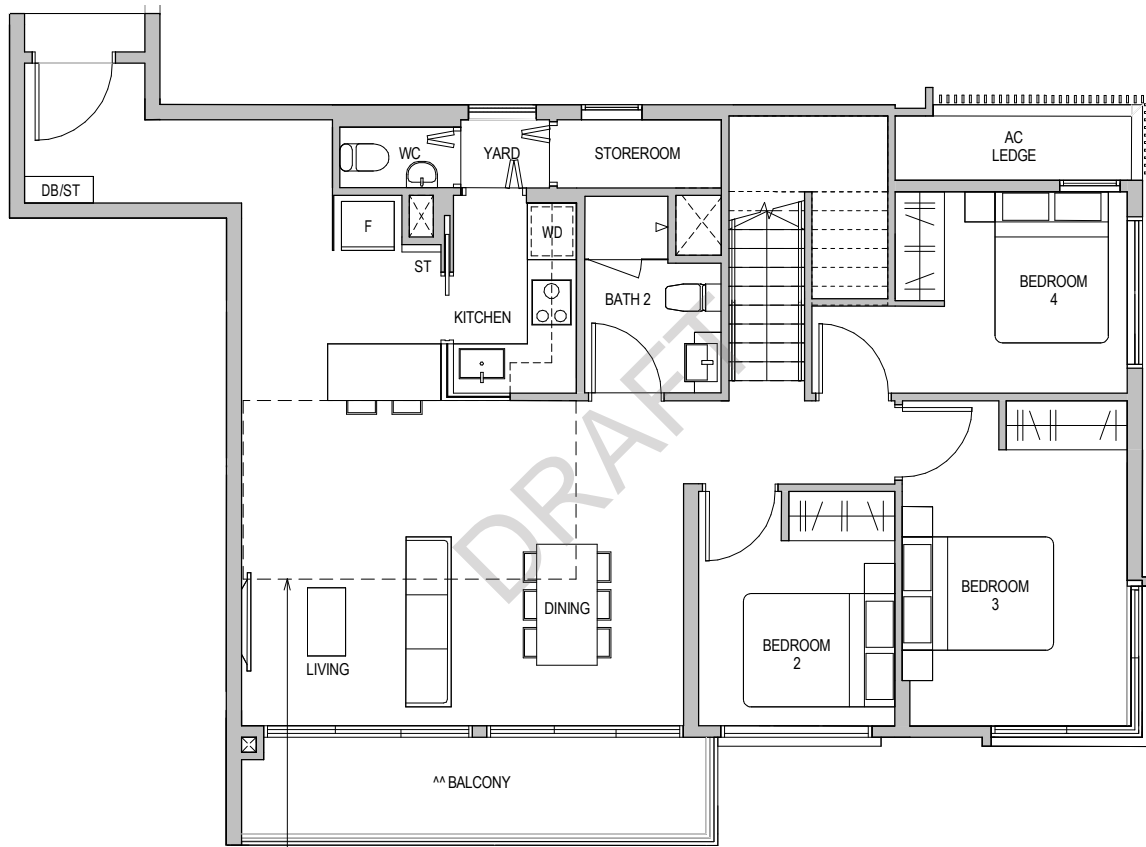
Block 16 #05-37

** AREA IS INCLUSIVE OF STRATA VOID AREA ABOVE LIVING, DINING AND STAIRS AS PER DOTTED LINE

** AREA IS INCLUSIVE OF STRATA VOID AREA ABOVE STAIRCASE AS PER DOTTED LINE



UPPER PENTHOUSE LEVEL



** AREA IS INCLUSIVE OF STRATA VOID AREA ABOVE LIVING AND DINING AS PER DOTTED LINE

LOWER PENTHOUSE LEVEL

ST Storage Cabinet

^ The PES shall not be enclosed.

^^ The balcony shall not be enclosed. Only approved balcony screens are to be used. For an illustration of the approved balcony screen, please refer to the diagram annexed hereto as "Annexure 1".

Areas include AC Ledge, Balcony, PES, and Strata Void Area (where applicable). Orientations and facings will differ depending on the unit you are purchasing, please refer to the key plan. Plans are not drawn to scale and subject to change as may be required or approved by the relevant authorities. All areas are estimates only and are subject to final survey.

