

1 - Bedroom

Type A1

41 sq m / 441 sq ft

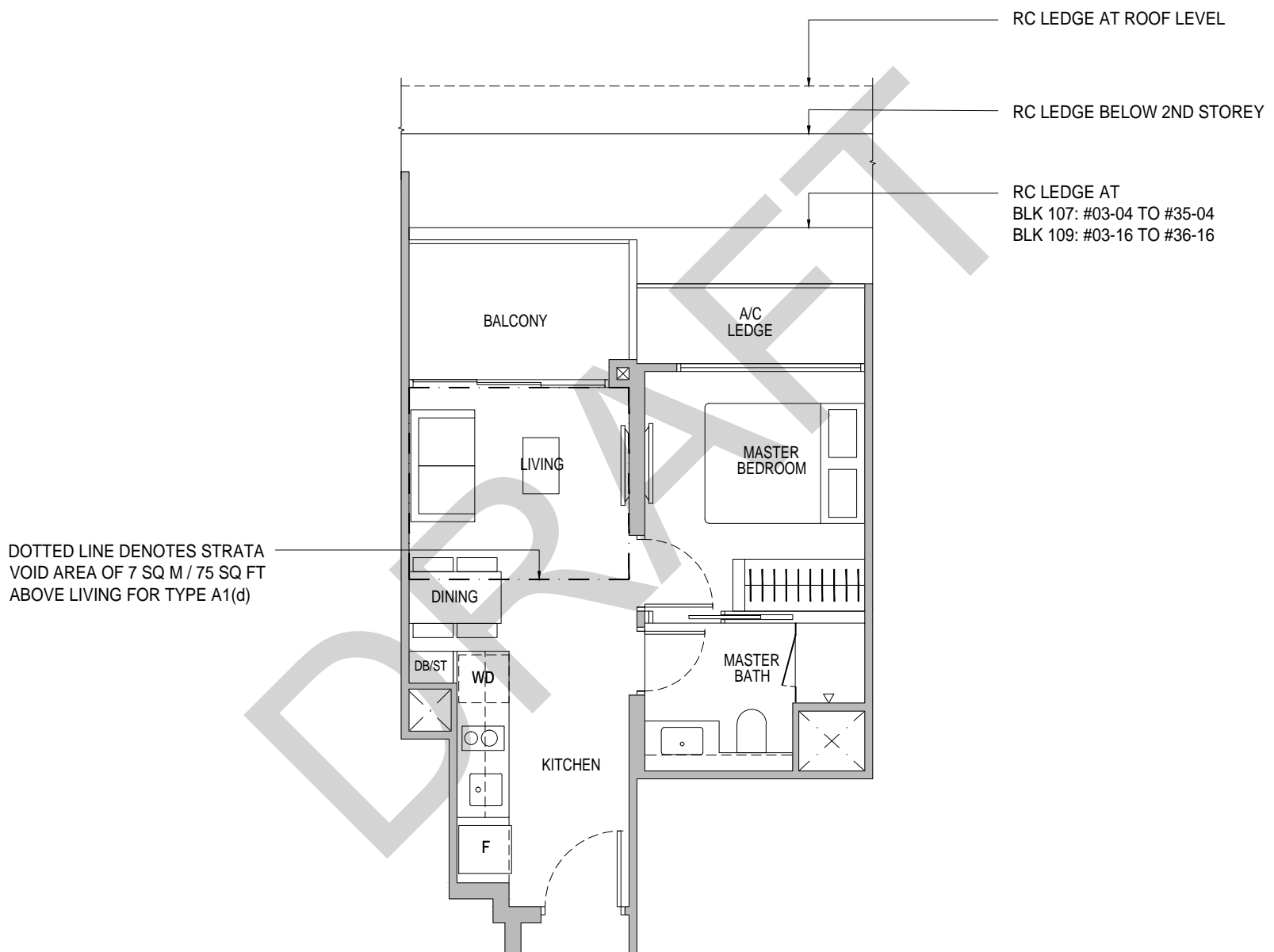
BLK 107 : #02-04* to #35-04*

BLK 109 : #02-16 to #35-16

Type A1(d)

48 sq m / 517 sq ft
including strata void area of 7 sq m / 75 sq ft above living
Approximate 4.4 m floor to ceiling height at living

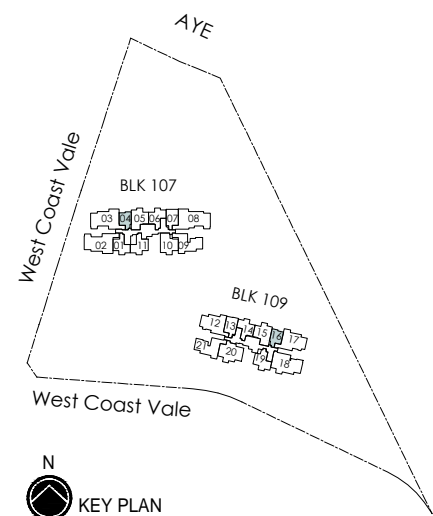
BLK 109 : #36-16



*Mirror Image



Area includes air-con (A/C) ledge, balcony and strata void area where applicable. Some units are mirror images of the apartment plans shown in the brochure. Please refer to the key plan for orientation. The plans are subject to change as may be approved by relevant authorities. All floor plans are approximate measurements only and are subject to government re-survey. The balcony shall not be enclosed unless with the approved balcony screen. For an illustration of the approved balcony screen, please refer to the diagram annexed hereto as "Annexure A".



Keyplan is not drawn to scale

THIS FLOOR PLAN MAY BE SUBJECT TO CHANGE

1 - Bedroom + Study

Type A2S

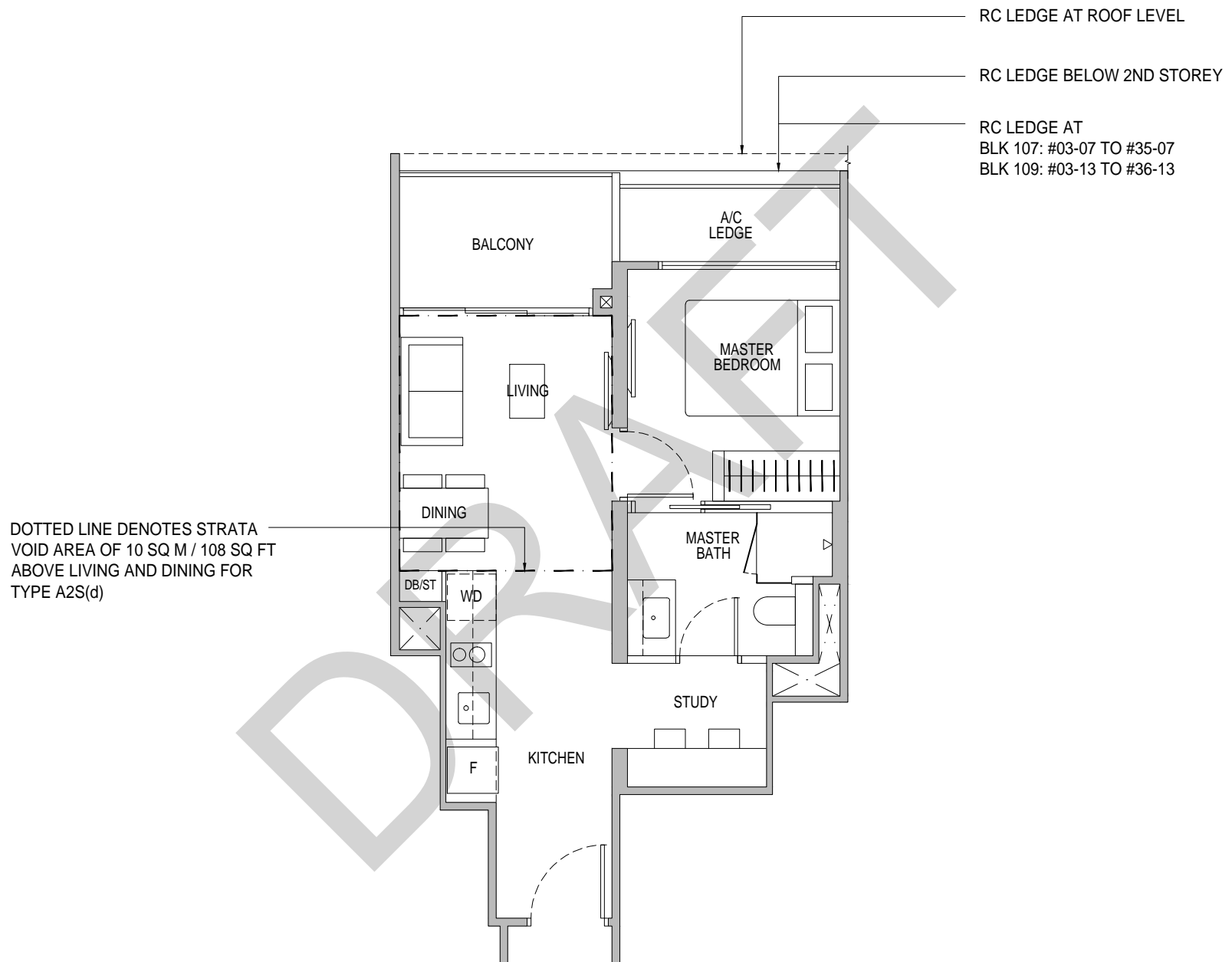
47 sq m / 506 sq ft

BLK 107 : #02-07 to #35-07
BLK 109 : #02-13* to #35-13*

Type A2S(d)

57 sq m / 614 sq ft
including strata void area of 10 sq m / 108 sq ft above living and dining
Approximate 4.4 m floor to ceiling height at living and dining

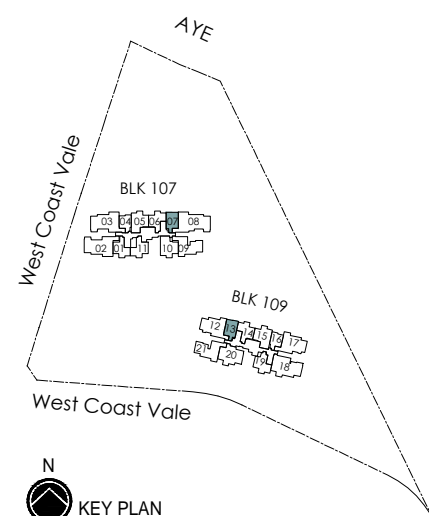
BLK 109 : #36-13*



*Mirror Image



Area includes air-con (A/C) ledge, balcony and strata void area where applicable. Some units are mirror images of the apartment plans shown in the brochure. Please refer to the key plan for orientation. The plans are subject to change as may be approved by relevant authorities. All floor plans are approximate measurements only and are subject to government re-survey. The balcony shall not be enclosed unless with the approved balcony screen. For an illustration of the approved balcony screen, please refer to the diagram annexed hereto as "Annexure A".



Keyplan is not drawn to scale

THIS FLOOR PLAN MAY BE SUBJECT TO CHANGE

2 - Bedroom

Type B1

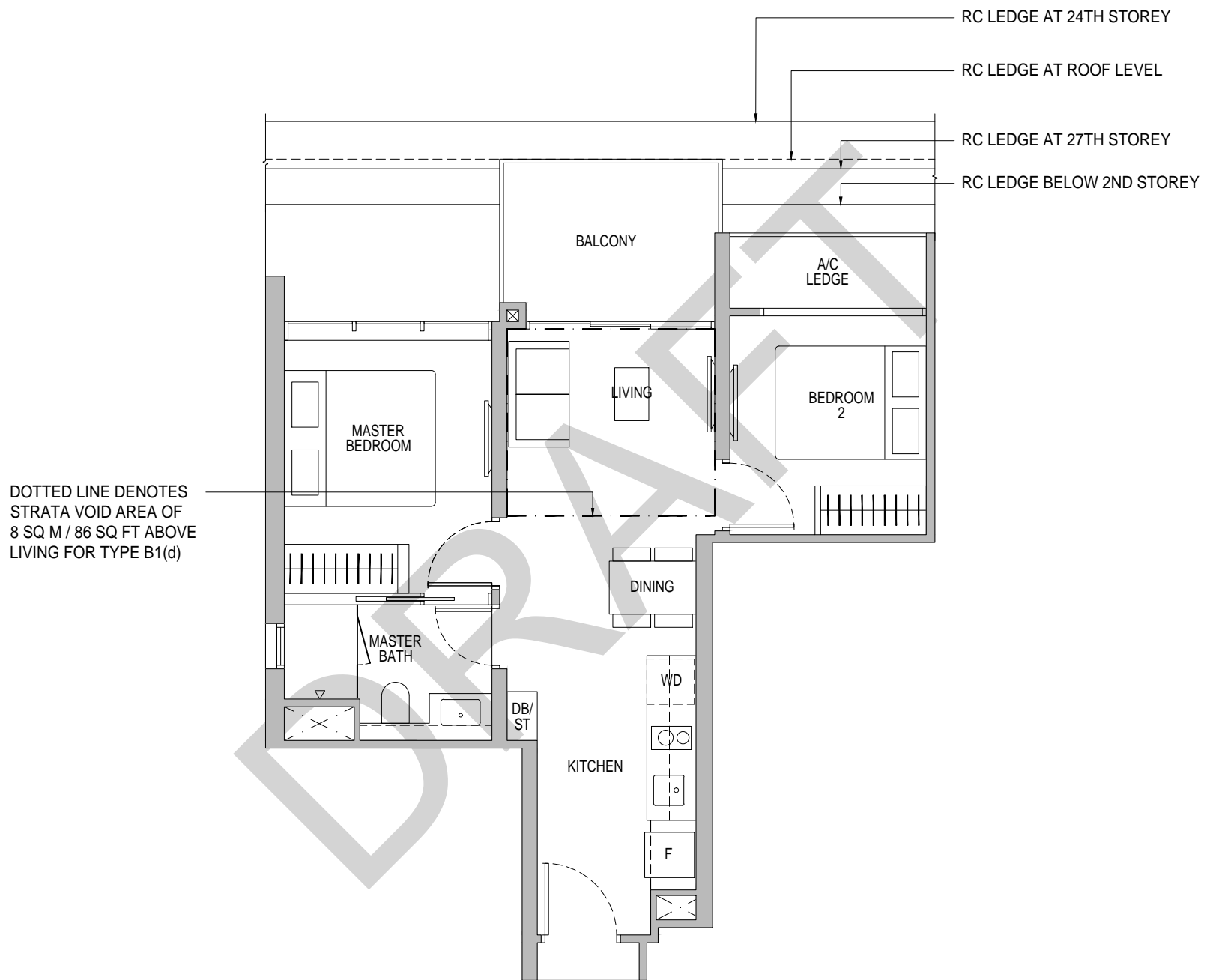
56 sq m / 603 sq ft

BLK 107 : #02-11 to #23-11, #27-11 to #35-11

Type B1(d)

64 sq m / 689 sq ft
including strata void area of 8 sq m / 86 sq ft above living
Approximate 4.4 m floor to ceiling height at living

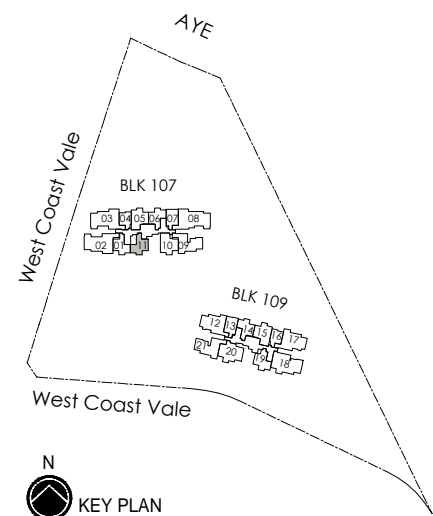
BLK 107 : #36-11



*Mirror Image



Area includes air-con (A/C) ledge, balcony and strata void area where applicable. Some units are mirror images of the apartment plans shown in the brochure. Please refer to the key plan for orientation. The plans are subject to change as may be approved by relevant authorities. All floor plans are approximate measurements only and are subject to government re-survey. The balcony shall not be enclosed unless with the approved balcony screen. For an illustration of the approved balcony screen, please refer to the diagram annexed hereto as "Annexure A".



Keyplan is not drawn to scale

THIS FLOOR PLAN MAY BE SUBJECT TO CHANGE

2 - Bedroom

Type B1a

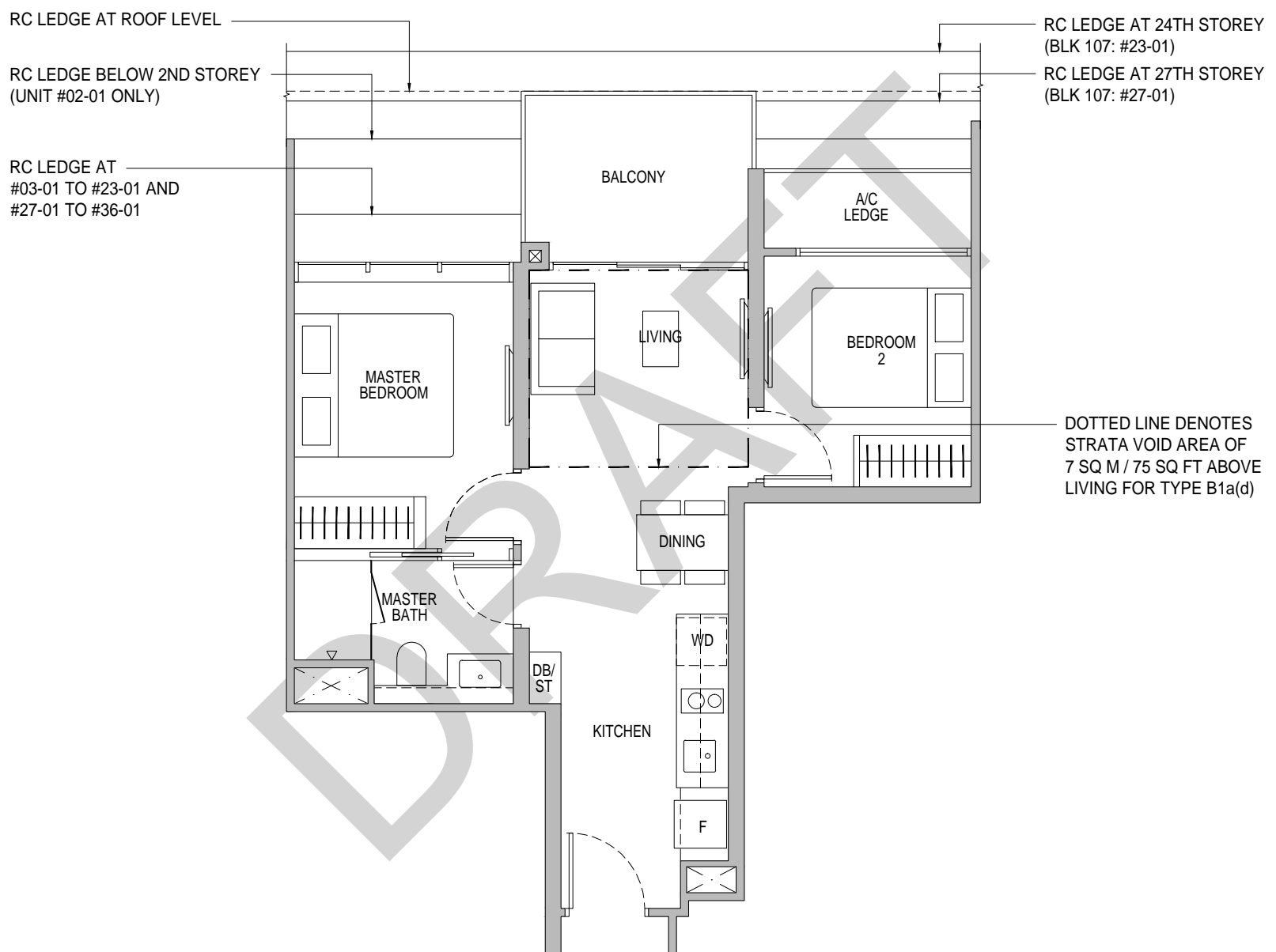
57 sq m / 614 sq ft

BLK 107 : #02-01* to #23-01*, #27-01* to #35-01*
 BLK 107 : #02-06 to #35-06
 BLK 109 : #02-14* to #35-14*

Type B1a(d)

64 sq m / 689 sq ft
 including strata void area of 7 sq m / 75 sq ft above living
 Approximate 4.4 m floor to ceiling height at living

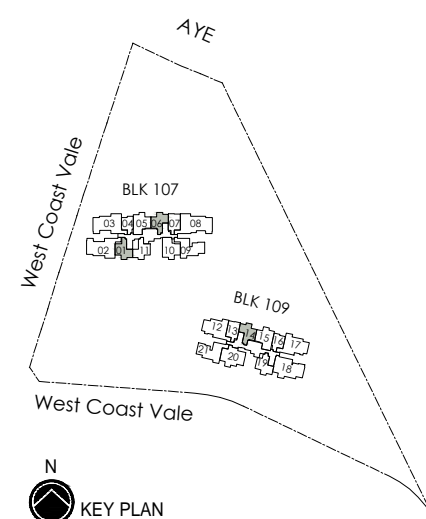
BLK 107 : #36-01*, #36-06
 BLK 109 : #36-14*



*Mirror Image



Area includes air-con (A/C) ledge, balcony and strata void area where applicable. Some units are mirror images of the apartment plans shown in the brochure. Please refer to the key plan for orientation. The plans are subject to change as may be approved by relevant authorities. All floor plans are approximate measurements only and are subject to government re-survey. The balcony shall not be enclosed unless with the approved balcony screen. For an illustration of the approved balcony screen, please refer to the diagram annexed hereto as "Annexure A".



Keyplan is not drawn to scale

THIS FLOOR PLAN MAY BE SUBJECT TO CHANGE

2 - Bedroom

Type B2

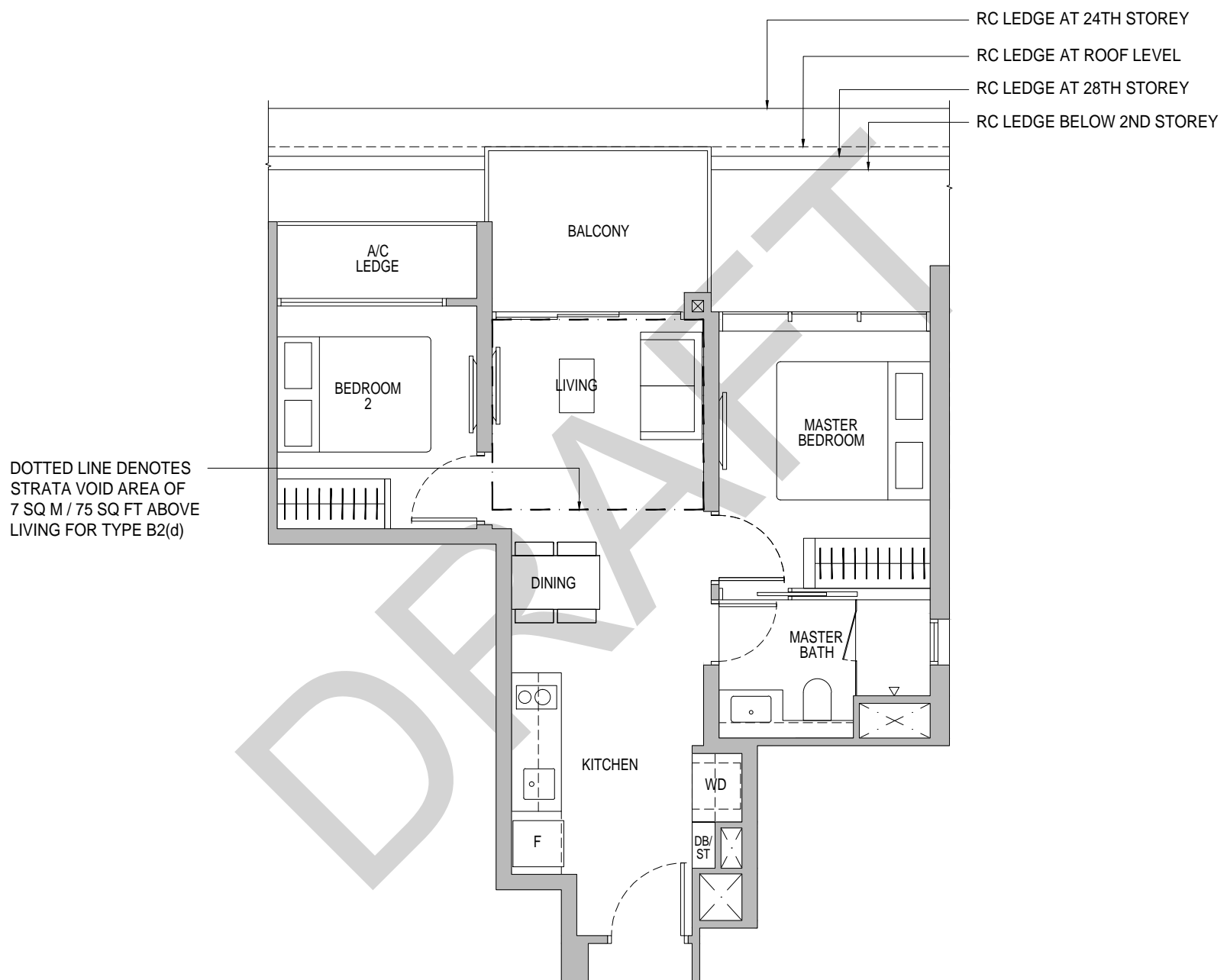
58 sq m / 624 sq ft

BLK 109 : #02-19 to #23-19, #28-19 to #35-19

Type B2(d)

65 sq m / 700 sq ft
including strata void area of 7 sq m / 75 sq ft above living
Approximate 4.4 m floor to ceiling height at living

BLK 109 : #36-19

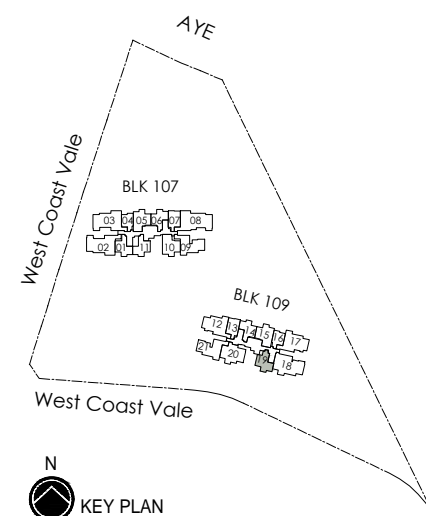


DOTTED LINE DENOTES STRATA VOID AREA OF 7 SQ M / 75 SQ FT ABOVE LIVING FOR TYPE B2(d)

*Mirror Image



Area includes air-con (A/C) ledge, balcony and strata void area where applicable. Some units are mirror images of the apartment plans shown in the brochure. Please refer to the key plan for orientation. The plans are subject to change as may be approved by relevant authorities. All floor plans are approximate measurements only and are subject to government re-survey. The balcony shall not be enclosed unless with the approved balcony screen. For an illustration of the approved balcony screen, please refer to the diagram annexed hereto as "Annexure A".



N
KEY PLAN

Keyplan is not drawn to scale

THIS FLOOR PLAN MAY BE SUBJECT TO CHANGE

2 - Bedroom Premium + Study

Type B3P

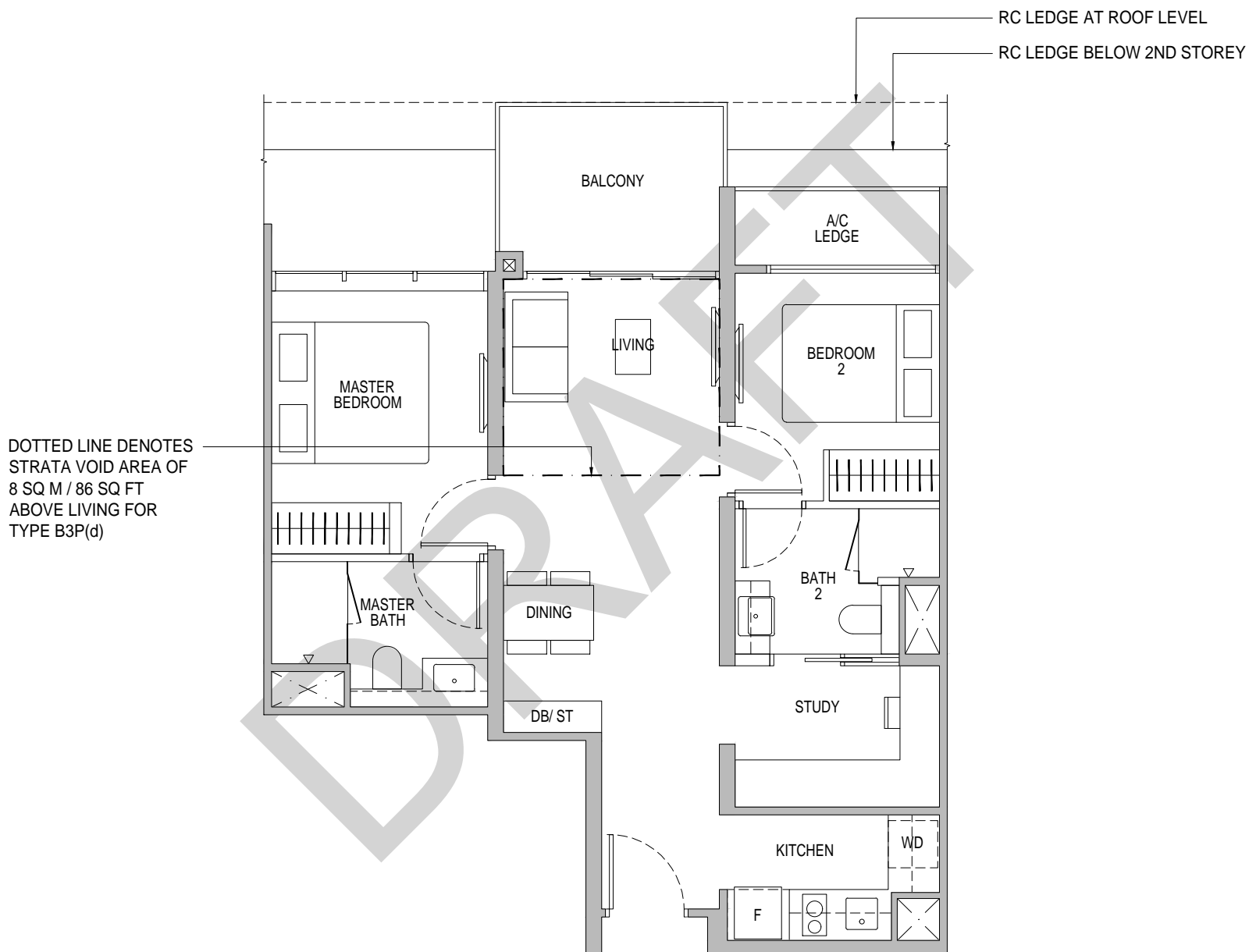
71 sq m / 764 sq ft

BLK 107 : #02-05* to #35-05*
 BLK 107 : #24-10 to #26-10
 BLK 109 : #02-15 to #35-15

Type B3P(d)

79 sq m / 850 sq ft
 including strata void area of 8 sq m / 86 sq ft above living
 Approximate 4.4 m floor to ceiling height at living

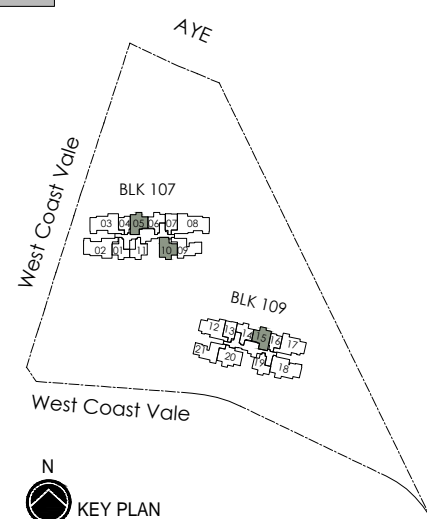
BLK 107 : #36-05*
 BLK 109 : #36-15



*Mirror Image



Area includes air-con (A/C) ledge, balcony and strata void area where applicable. Some units are mirror images of the apartment plans shown in the brochure. Please refer to the key plan for orientation. The plans are subject to change as may be approved by relevant authorities. All floor plans are approximate measurements only and are subject to government re-survey. The balcony shall not be enclosed unless with the approved balcony screen. For an illustration of the approved balcony screen, please refer to the diagram annexed hereto as "Annexure A".



Keyplan is not drawn to scale

THIS FLOOR PLAN MAY BE SUBJECT TO CHANGE

2 - Bedroom Premium + Study

Type B3Pa

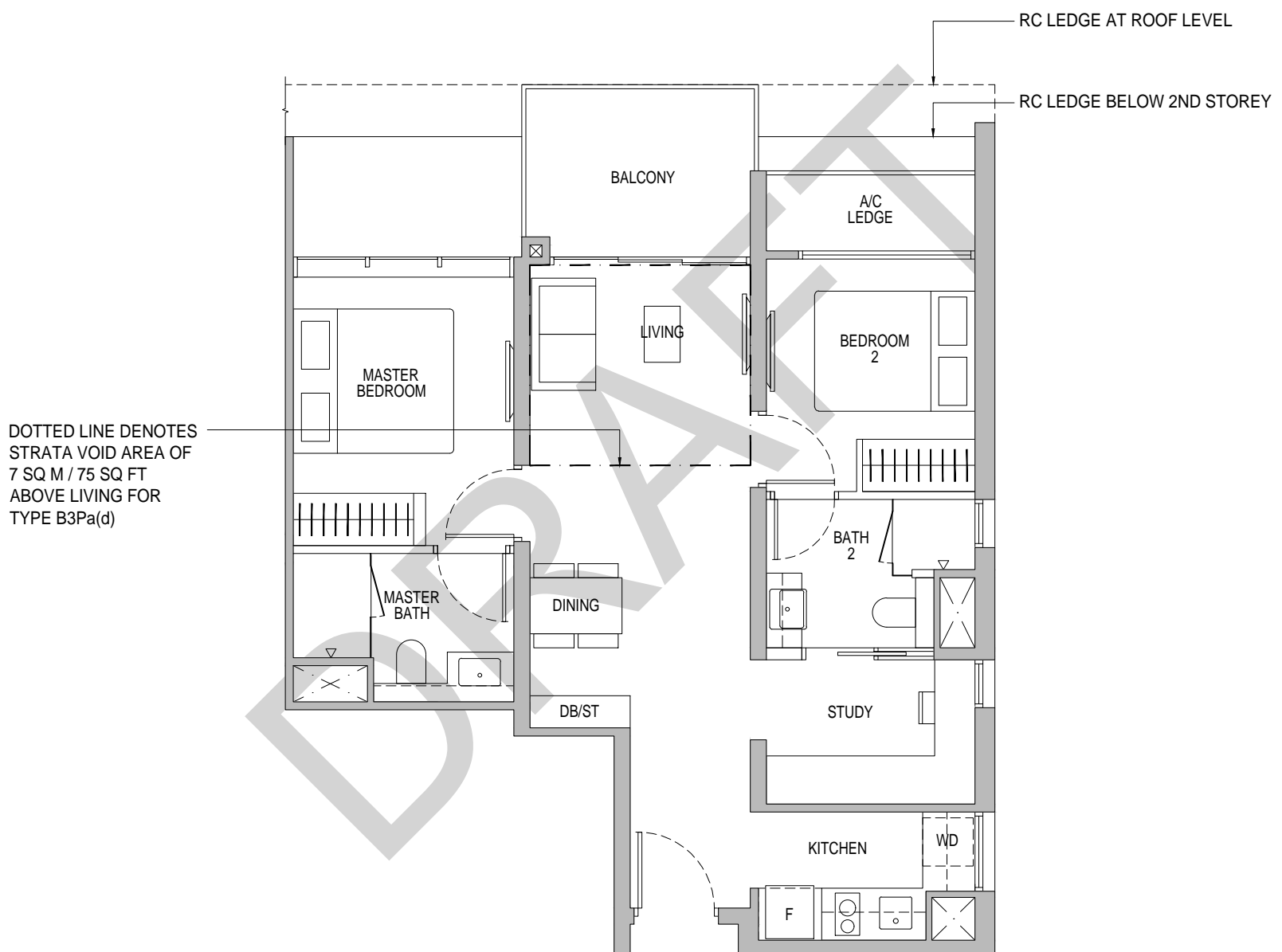
71 sq m / 764 sq ft

BLK 107 : #02-10 to #23-10, #27-10 to #35-10

Type B3Pa(d)

78 sq m / 840 sq ft
including strata void area of 7 sq m / 75 sq ft above living
Approximate 4.4 m floor to ceiling height at living

BLK 107 : #36-10

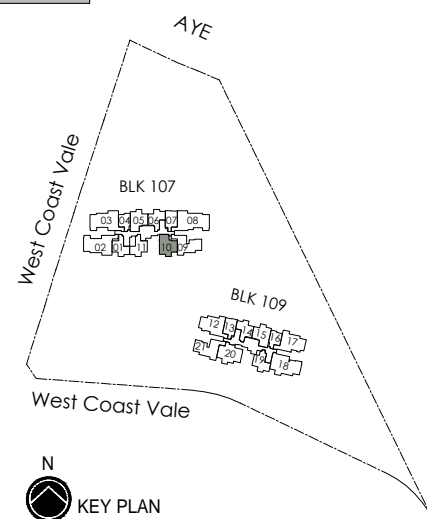


DOTTED LINE DENOTES STRATA VOID AREA OF 7 SQ M / 75 SQ FT ABOVE LIVING FOR TYPE B3Pa(d)

*Mirror Image



Area includes air-con (A/C) ledge, balcony and strata void area where applicable. Some units are mirror images of the apartment plans shown in the brochure. Please refer to the key plan for orientation. The plans are subject to change as may be approved by relevant authorities. All floor plans are approximate measurements only and are subject to government re-survey. The balcony shall not be enclosed unless with the approved balcony screen. For an illustration of the approved balcony screen, please refer to the diagram annexed hereto as "Annexure A".



Keyplan is not drawn to scale

THIS FLOOR PLAN MAY BE SUBJECT TO CHANGE

3 - Bedroom

Type C1

89 sq m / 958 sq ft

BLK 107 : #02-09* to #35-09*

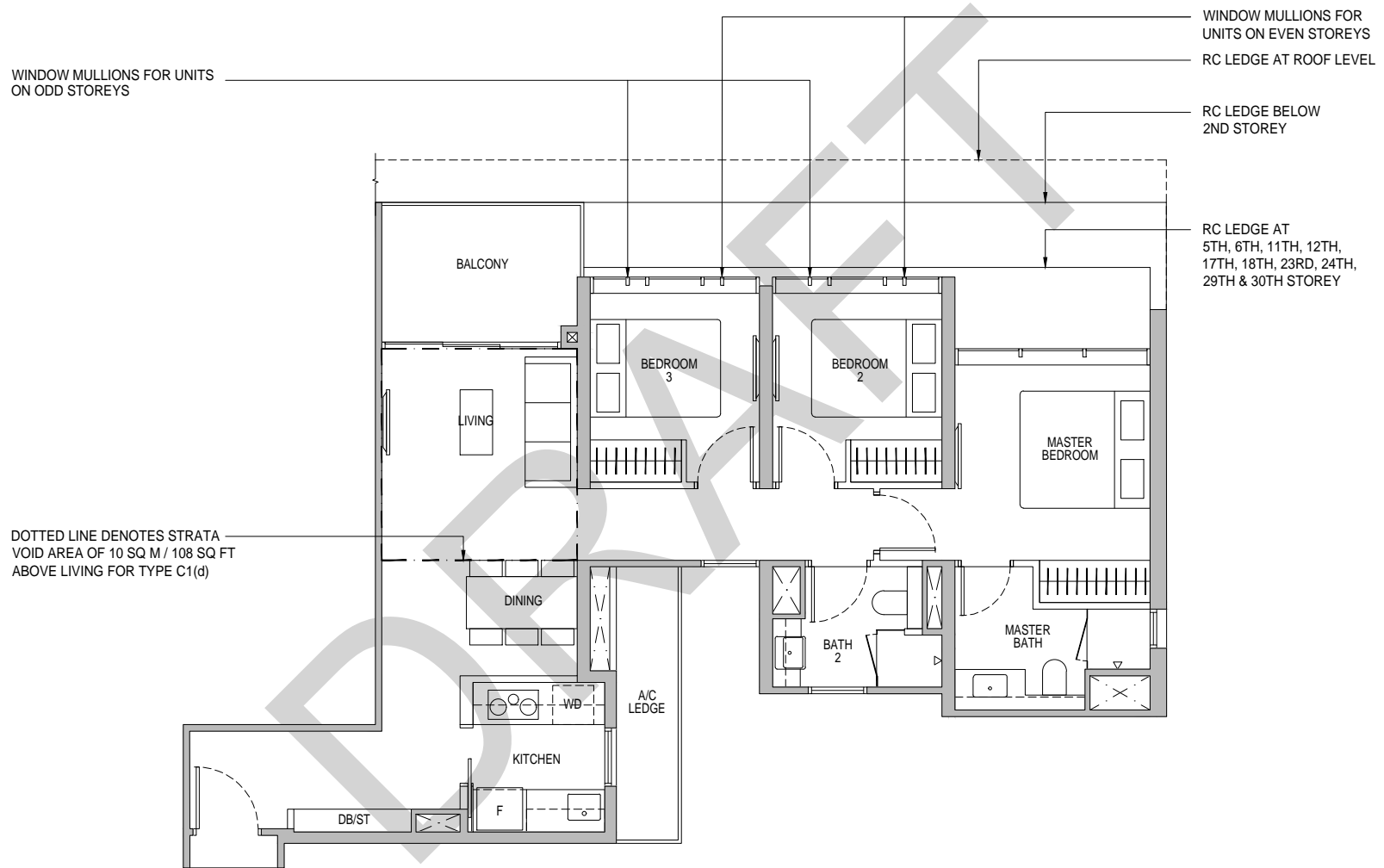
BLK 109 : #02-21 to #35-21

Type C1(d)

99 sq m / 1066 sq ft
including strata void area of 10 sq m / 108 sq ft above living
Approximate 4.4 m floor to ceiling height at living

BLK 107 : #36-09*

BLK 109 : #36-21

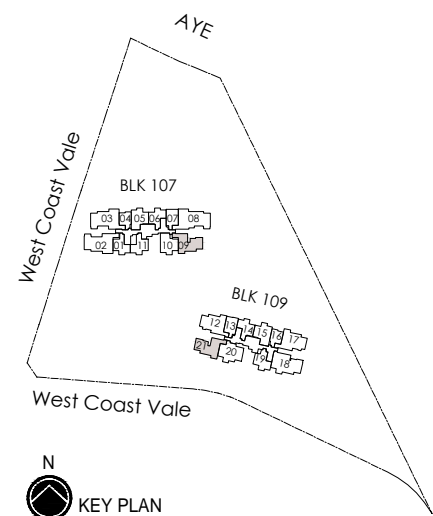


DOTTED LINE DENOTES STRATA VOID AREA OF 10 SQ M / 108 SQ FT ABOVE LIVING FOR TYPE C1(d)

*Mirror Image



Area includes air-con (A/C) ledge, balcony and strata void area where applicable. Some units are mirror images of the apartment plans shown in the brochure. Please refer to the key plan for orientation. The plans are subject to change as may be approved by relevant authorities. All floor plans are approximate measurements only and are subject to government re-survey. The balcony shall not be enclosed unless with the approved balcony screen. For an illustration of the approved balcony screen, please refer to the diagram annexed hereto as "Annexure A".



Keyplan is not drawn to scale

THIS FLOOR PLAN MAY BE SUBJECT TO CHANGE

3 - Bedroom Premium + Flexi

Type C2P

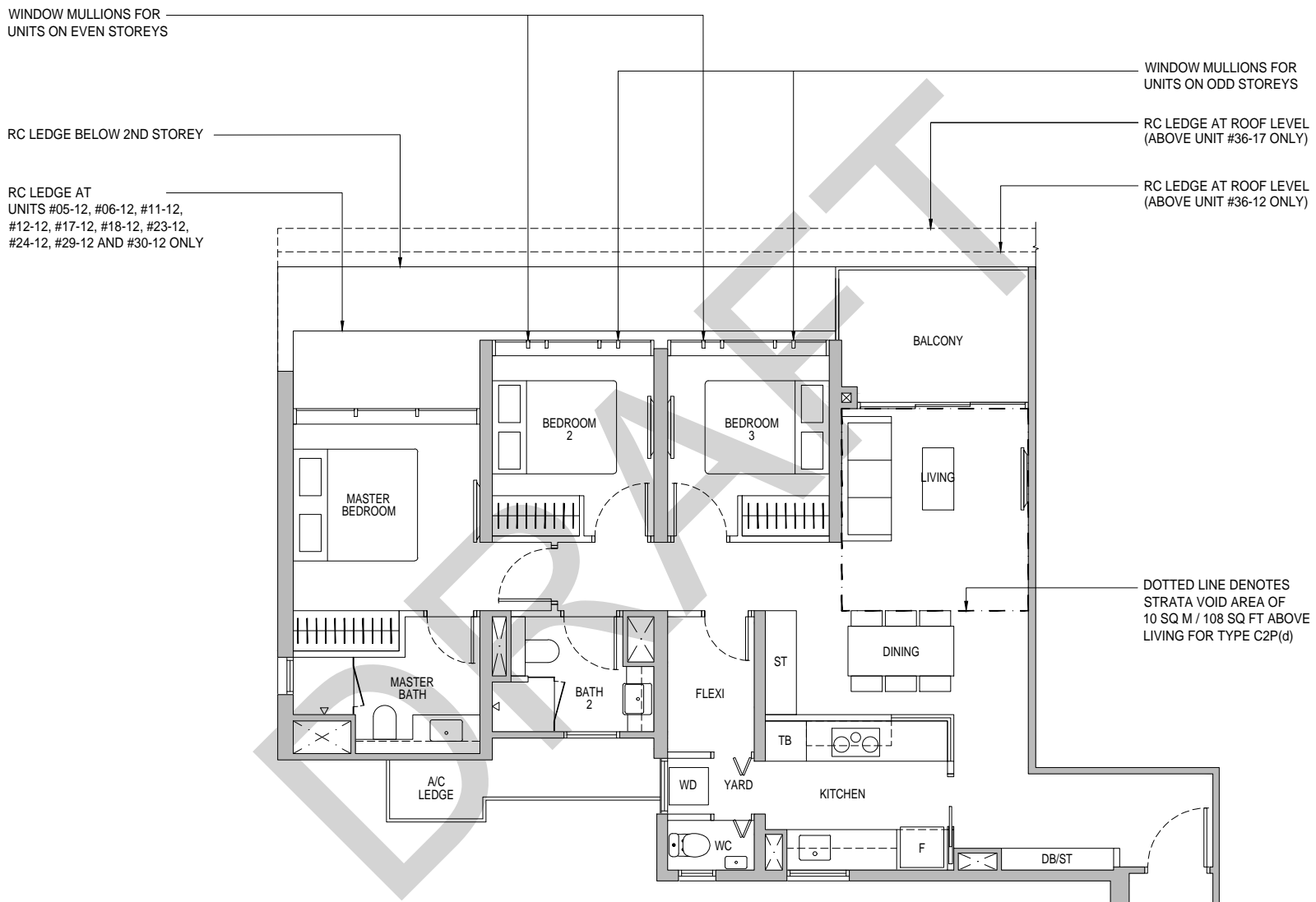
99 sq m / 1066 sq ft

BLK 109 : #02-12 to #35-12
 BLK 109 : #02-17* to #35-17*

Type C2P(d)

109 sq m / 1173 sq ft
 including strata void area of 10 sq m / 108 sq ft above living
 Approximate 4.4 m floor to ceiling height at living

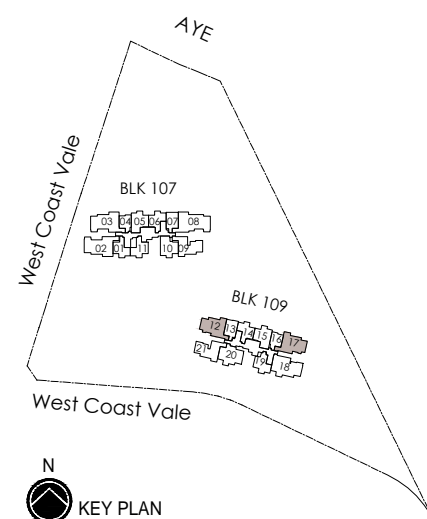
BLK 109 : #36-12
 BLK 109 : #36-17*



*Mirror Image



Area includes air-con (A/C) ledge, balcony and strata void area where applicable. Some units are mirror images of the apartment plans shown in the brochure. Please refer to the key plan for orientation. The plans are subject to change as may be approved by relevant authorities. All floor plans are approximate measurements only and are subject to government re-survey. The balcony shall not be enclosed unless with the approved balcony screen. For an illustration of the approved balcony screen, please refer to the diagram annexed hereto as "Annexure A".



Keyplan is not drawn to scale

THIS FLOOR PLAN MAY BE SUBJECT TO CHANGE

3 - Bedroom Dual - Key

Type C3DK

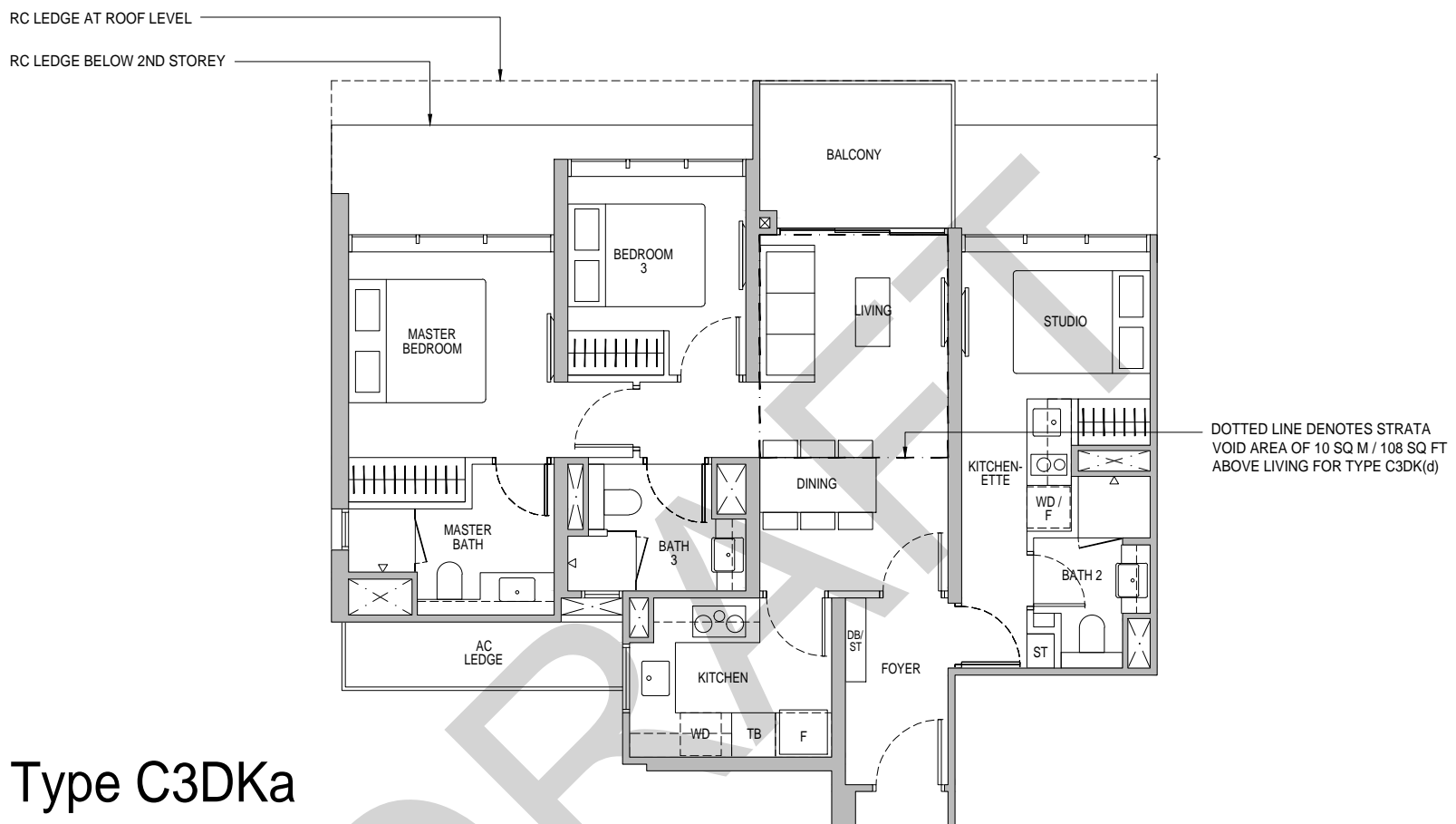
92 sq m / 990 sq ft

BLK 109 : #02-20 to #23-20, #28-20 to #35-20

Type C3DK(d)

102 sq m / 1098 sq ft
including strata void area of 10 sq m / 108 sq ft above living
Approximate 4.4 m floor to ceiling height at living

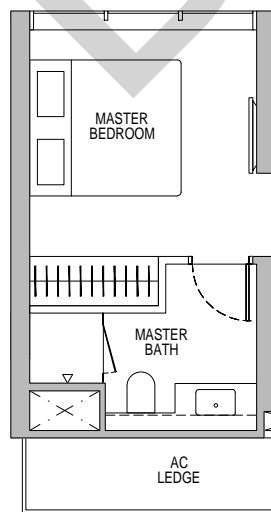
BLK 109 : #36-20



Type C3DKa

92 sq m / 990 sq ft

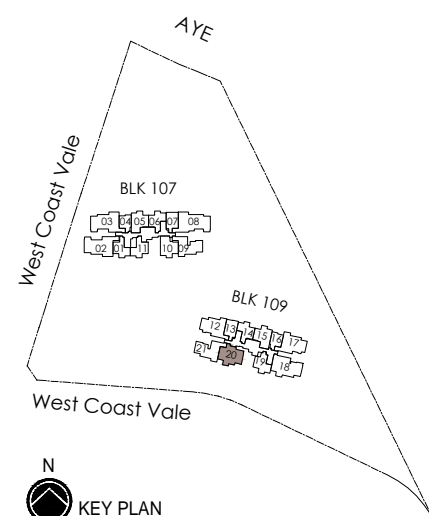
BLK 109 : #24-20 to #27-20



*Mirror Image



Area includes air-con (A/C) ledge, balcony and strata void area where applicable. Some units are mirror images of the apartment plans shown in the brochure. Please refer to the key plan for orientation. The plans are subject to change as may be approved by relevant authorities. All floor plans are approximate measurements only and are subject to government re-survey. The balcony shall not be enclosed unless with the approved balcony screen. For an illustration of the approved balcony screen, please refer to the diagram annexed hereto as "Annexure A".



KEY PLAN

Keyplan is not drawn to scale

THIS FLOOR PLAN MAY BE SUBJECT TO CHANGE

4 - Bedroom

Type D1

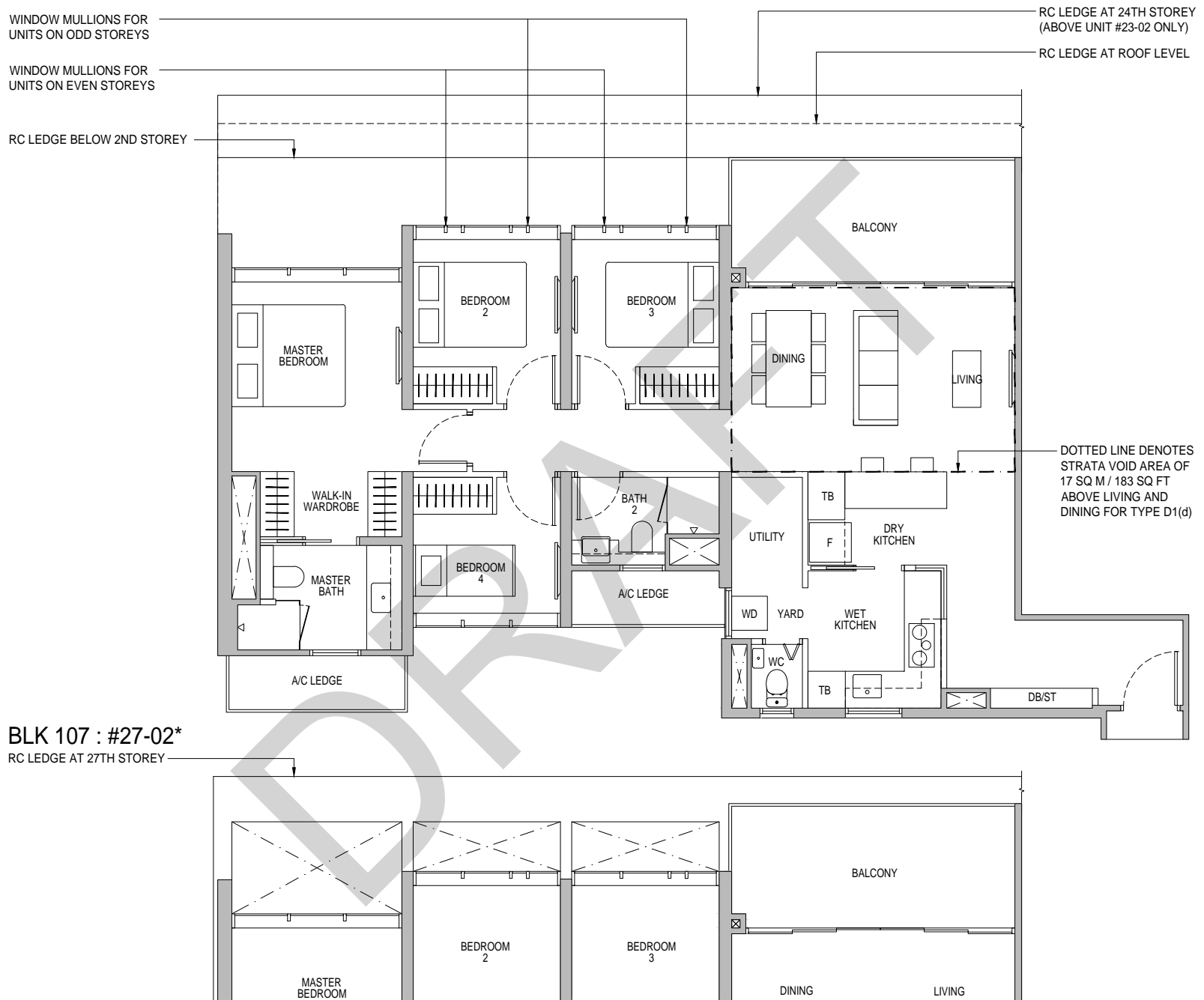
119 sq m / 1281 sq ft

BLK 107 : #02-02* to #23-02*, #28-02* to #35-02*
 BLK 107 : #02-03 to #35-03

Type D1(d)

136 sq m / 1464 sq ft
 including strata void area of 17 sq m / 183 sq ft above living and dining
 Approximate 4.4 m floor to ceiling height at living and dining

BLK 107 : #36-02*

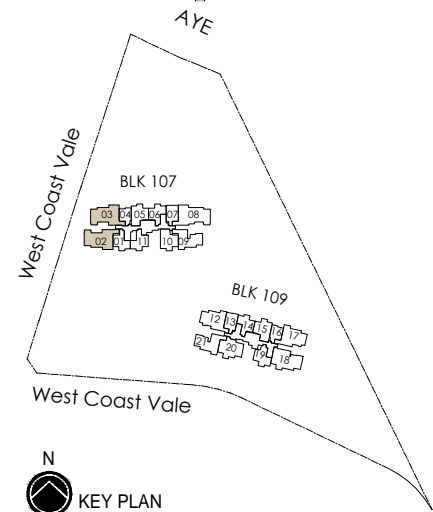


BLK 107 : #27-02*
 RC LEDGE AT 27TH STOREY

*Mirror Image



Area includes air-con (A/C) ledge, balcony and strata void area where applicable. Some units are mirror images of the apartment plans shown in the brochure. Please refer to the key plan for orientation. The plans are subject to change as may be approved by relevant authorities. All floor plans are approximate measurements only and are subject to government re-survey. The balcony shall not be enclosed unless with the approved balcony screen. For an illustration of the approved balcony screen, please refer to the diagram annexed hereto as "Annexure A".



Keyplan is not drawn to scale

THIS FLOOR PLAN MAY BE SUBJECT TO CHANGE

4 - Bedroom Dual - Key

Type D2DK

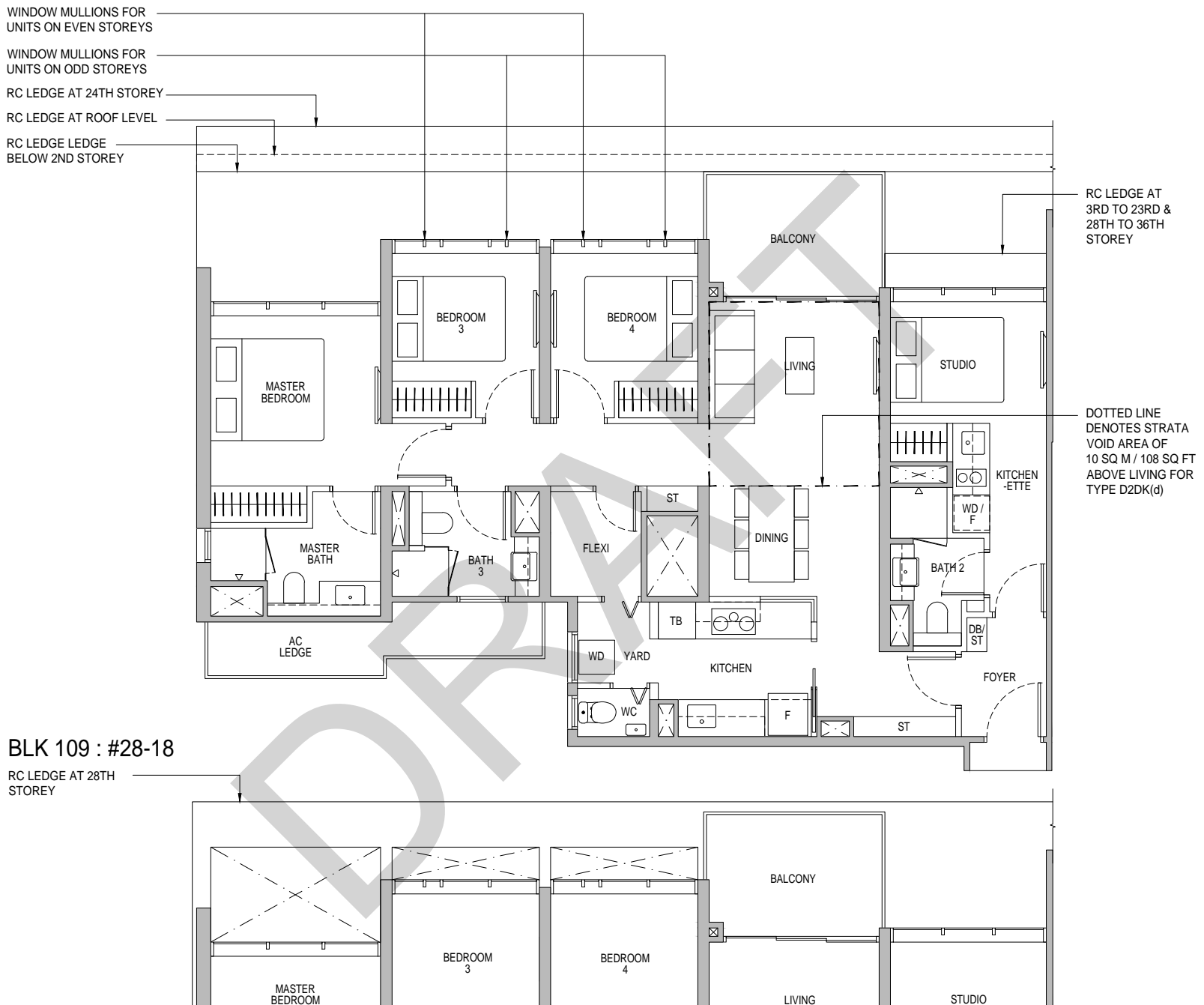
118 sq m / 1270 sq ft

BLK 109 : #02-18 to #23-18, #29-18 to #35-18

Type D2DK(d)

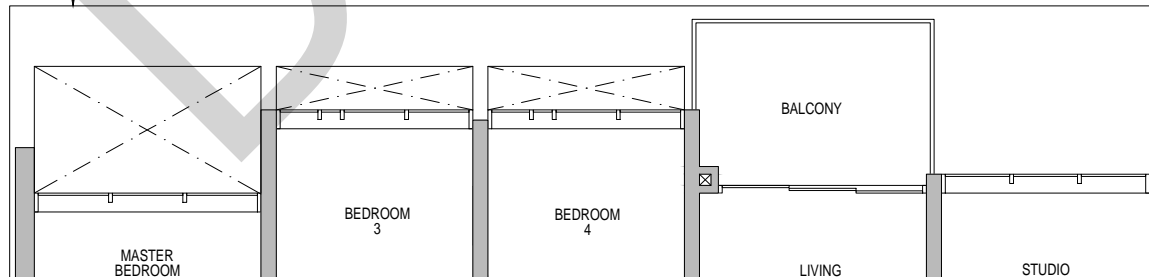
128 sq m / 1378 sq ft
including strata void area of 10 sq m / 108 sq ft above living
Approximate 4.4 m floor to ceiling height at living

BLK 109 : #36-18



BLK 109 : #28-18

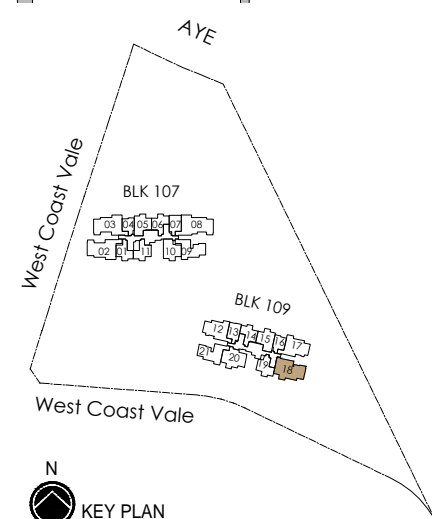
RC LEDGE AT 28TH STOREY



*Mirror Image



Area includes air-con (A/C) ledge, balcony and strata void area where applicable. Some units are mirror images of the apartment plans shown in the brochure. Please refer to the key plan for orientation. The plans are subject to change as may be approved by relevant authorities. All floor plans are approximate measurements only and are subject to government re-survey. The balcony shall not be enclosed unless with the approved balcony screen. For an illustration of the approved balcony screen, please refer to the diagram annexed hereto as "Annexure A".



Keyplan is not drawn to scale

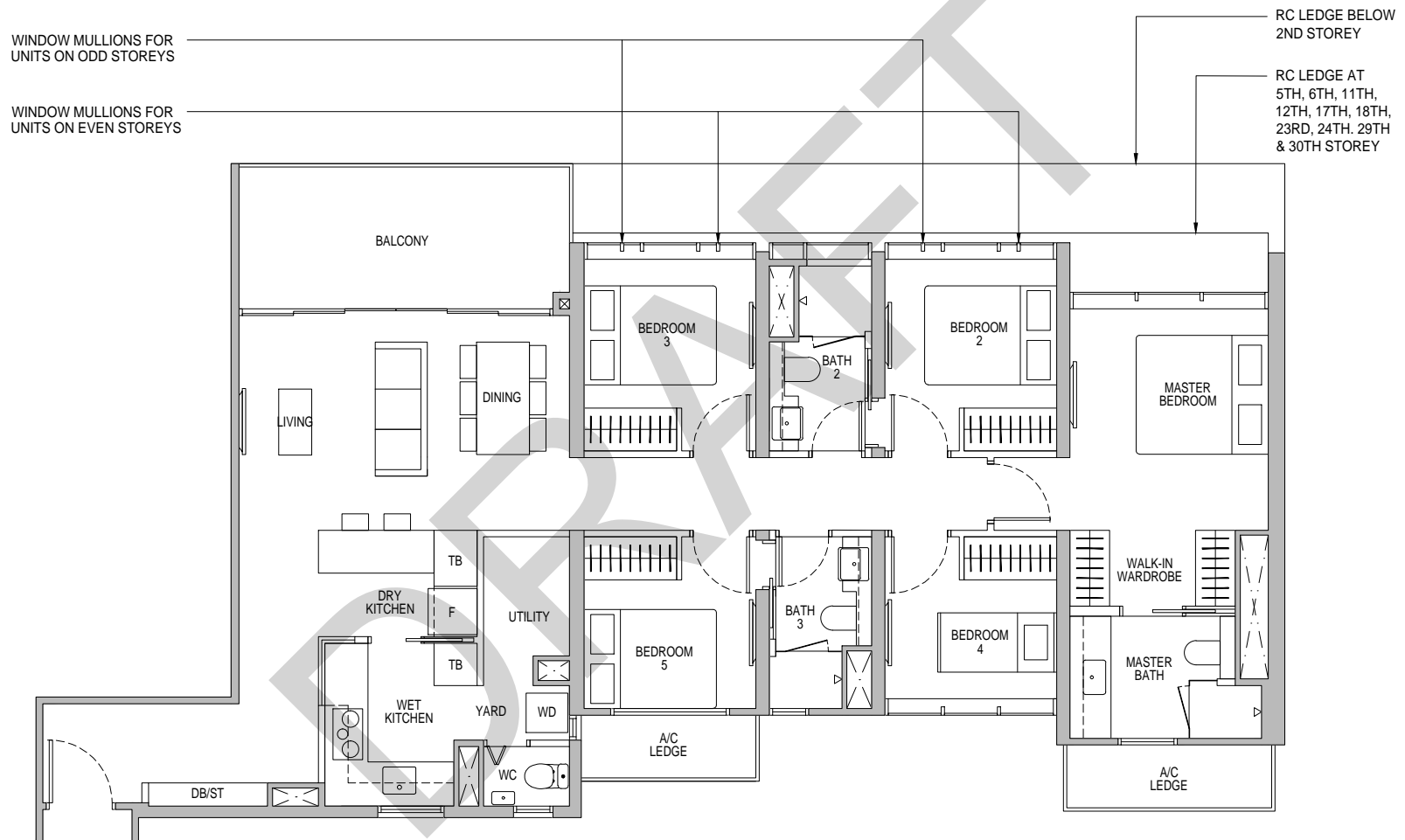
THIS FLOOR PLAN MAY BE SUBJECT TO CHANGE

5 - Bedroom

Type E1

134 sq m / 1442 sq ft

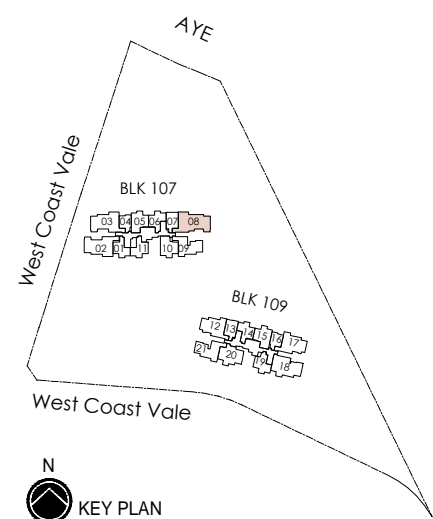
BLK 107 : #02-08 to #35-08



*Mirror Image



Area includes air-con (A/C) ledge, balcony and strata void area where applicable. Some units are mirror images of the apartment plans shown in the brochure. Please refer to the key plan for orientation. The plans are subject to change as may be approved by relevant authorities. All floor plans are approximate measurements only and are subject to government re-survey. The balcony shall not be enclosed unless with the approved balcony screen. For an illustration of the approved balcony screen, please refer to the diagram annexed hereto as "Annexure A".



Keyplan is not drawn to scale

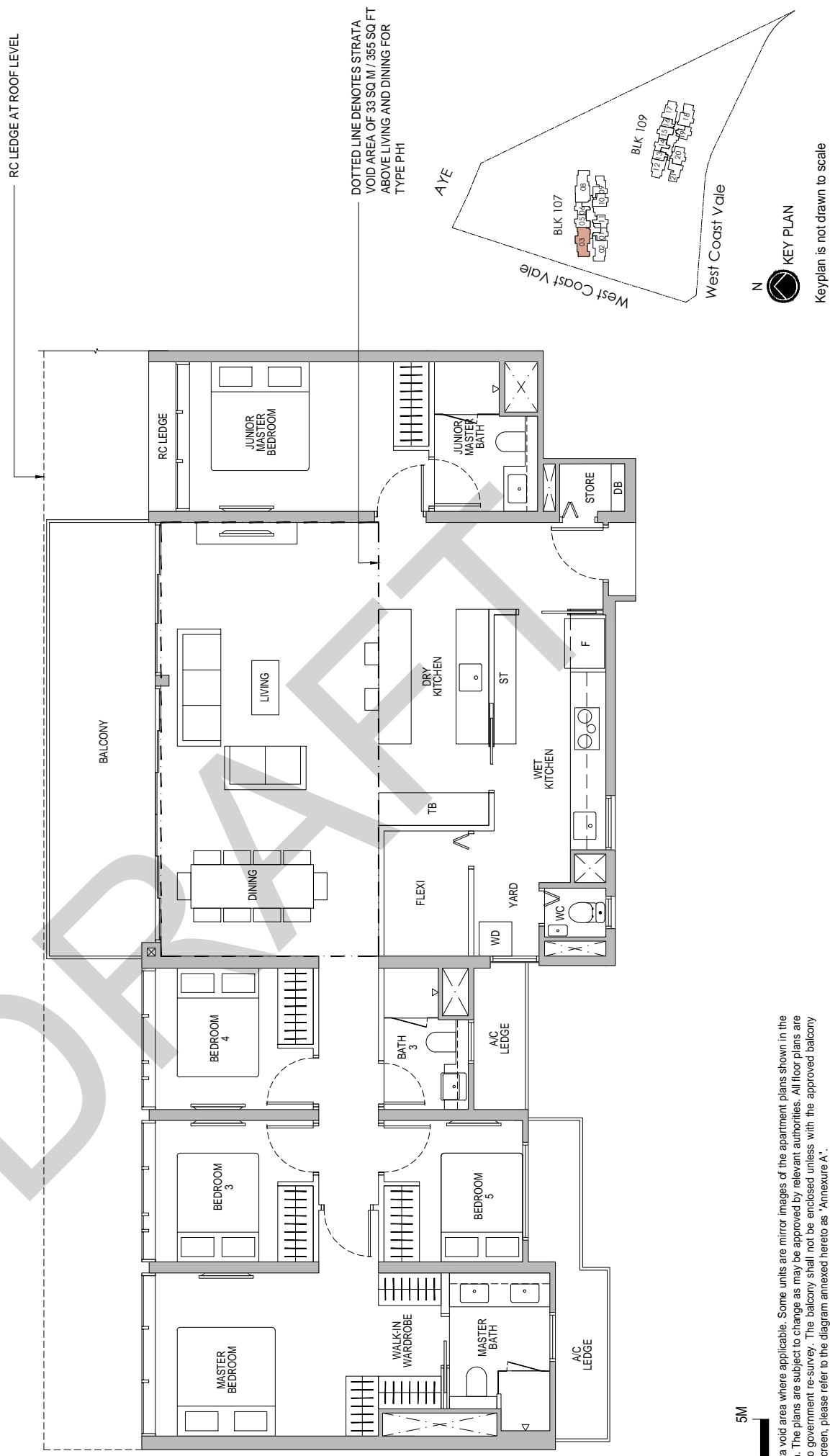
THIS FLOOR PLAN MAY BE SUBJECT TO CHANGE

Penthouse (5 Bedroom + Flexi)

Type PH1

206 sq m / 2217 sq ft
including strata void area of 33 sq m / 355 sq ft above living and dining
Approximate 4.4 m floor to ceiling height at living and dining
BLK 107 : #36-03

THIS FLOOR PLAN MAY BE SUBJECT TO CHANGE



*Mirror Image



Area includes air-con (A/C) ledge, balcony and strata void area where applicable. Some units are mirror images of the apartment plans shown in the brochure. Please refer to the key plan for orientation. The plans are subject to change as may be approved by relevant authorities. All floor plans are approximate measurements only and are subject to government re-survey. The balcony shall not be enclosed unless with the approved balcony screen. For an illustration of the approved balcony screen, please refer to the diagram annexed hereto as 'Annexure A'.

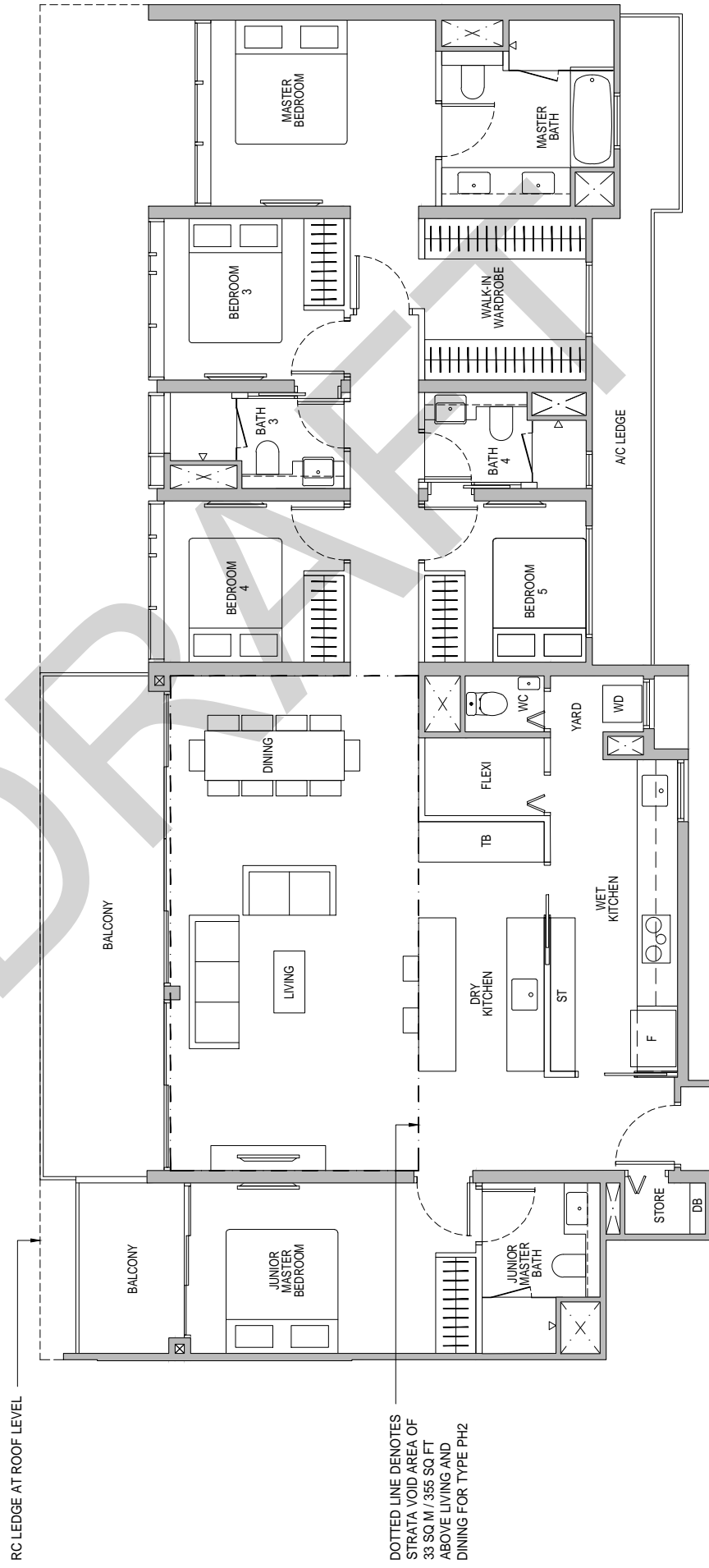
KEY PLAN

Keyplan is not drawn to scale

Penthouse (5 Bedroom + Flexi)

Type PH2

225 sq m / 2422 sq ft
including strata void area of 33 sq m / 355 sq ft above living and dining
Approximate 4.4 m floor to ceiling height at living and dining
BLK 107 : #36-08

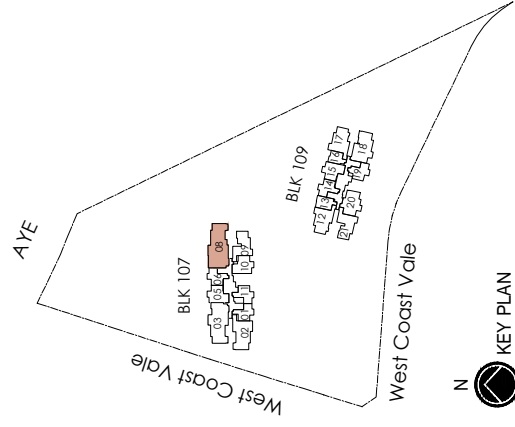


DOTTED LINE DENOTES
STRATA VOID AREA OF
33 SQ.M / 355 SQ.FT
ABOVE LIVING AND
DINING FOR TYPE PH2

*Mirror Image



Area includes air-con (A/C) ledge, balcony and strata void area where applicable. Some units are mirror images of the apartment plans shown in the brochure. Please refer to the key plan for orientation. The plans are subject to change as may be approved by relevant authorities. All floor plans are approximate measurements only and are subject to government re-survey. The balcony shall not be enclosed unless with the approved balcony screen. For an illustration of the approved balcony screen, please refer to the diagram annexed hereto as 'Annexure A'.



KEY PLAN

Keyplan is not drawn to scale